

SPLENDID ON SUMMIT AVE

Landscape Design/Outdoor Living over \$250,000





Overview

This client was looking for an entertainment oasis in their backyard. They have a historic home in St. Paul and were in need of a pool and entertainment area. They first reached out to a pool company and realized they wanted more of a master plan that could be implemented in phases. They didn't want to just "plop" the pool in. This called for us to help them avoid this situation.



Client Needs

The goal was to have an adult plunge pool and patio that was also fun for the kids to have friends over to hang out. The previous landscape felt like a city park, with mature trees and an unused large lawn area. The clients wanted the design to still feel lush and open, yet add more privacy where needed. Laying in the pool was the first item that they wanted to tackle. Getting this location correct was very important to the clients. Since they weren't quite sure what they wanted, we had to come up with a way to make this pool feel like a destination that has a quite, tranquil park like setting. The property is surrounded by other homes, and an apartment behind the ally. Nesting a pool in this lower had a lot of potential to offer this privacy the clients wanted.





BEFORE



Craftsmanship

We wanted the pool to be more of a destination and feel sunken and connected to the gardens. The 20'x 43' pool was designed to be in the lower portion of the yard. With the existing trees, we came up with a tree preservation plan to make sure we were doing the best thing possible for the trees. They have a 36" Horse Chestnut that we wanted to work around. We needed a retaining wall for the pool so we made sure the Fondulac wall was constructed at least 18 feet from the trunk of the tree. We installed Air pipes every 18" to allow airflow to the roots where fill was placed





The patios were constructed of limestone and clay pavers. We matched the existing Rumbled Full color Clay pavers on site to have everything feel cohesive. We continued the limestone to the lounging side of the patio. These were 24"x36" Steppers in turf. We really wanted to keep the turf between the steppers to help soften the hardscapes. The far end of the pool is a pergola. The stone columns were constructed with Fon du lac to tie into the wall stone and capped with the rowlock brick. This was the same brick used in the upper fireplace.







AESTHETICS

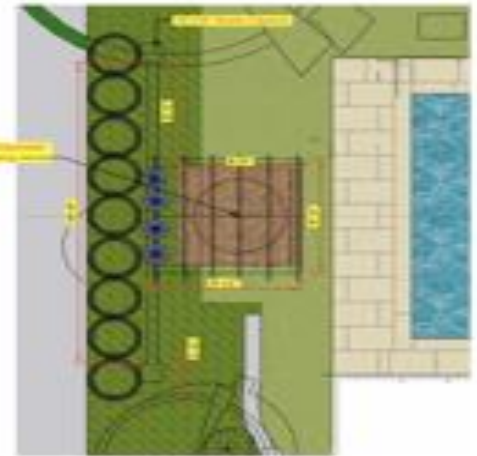




We felt that the the lighting for this project to to be soft, romantic, and fun. These clients love to entertain and needed flexible lighting that would give an overall glow to the backyard. Bistro lights on the upper and lower patios were put on a transformer that can also be turned off if they want it a little darker. The goal was to provide privacy yet still feel like you are in the city. They love their neighborhood and didn't want it to feel completely closed off with a hedge. So we implemented a variety of plantings with lots of whites, purples, and pops of yellow into the property to obtain this aesthetic. The idea behind placing the pool and pergola on the far end was to create a beautiful focal point and wonderful view from every view of the home.



Plant Plan



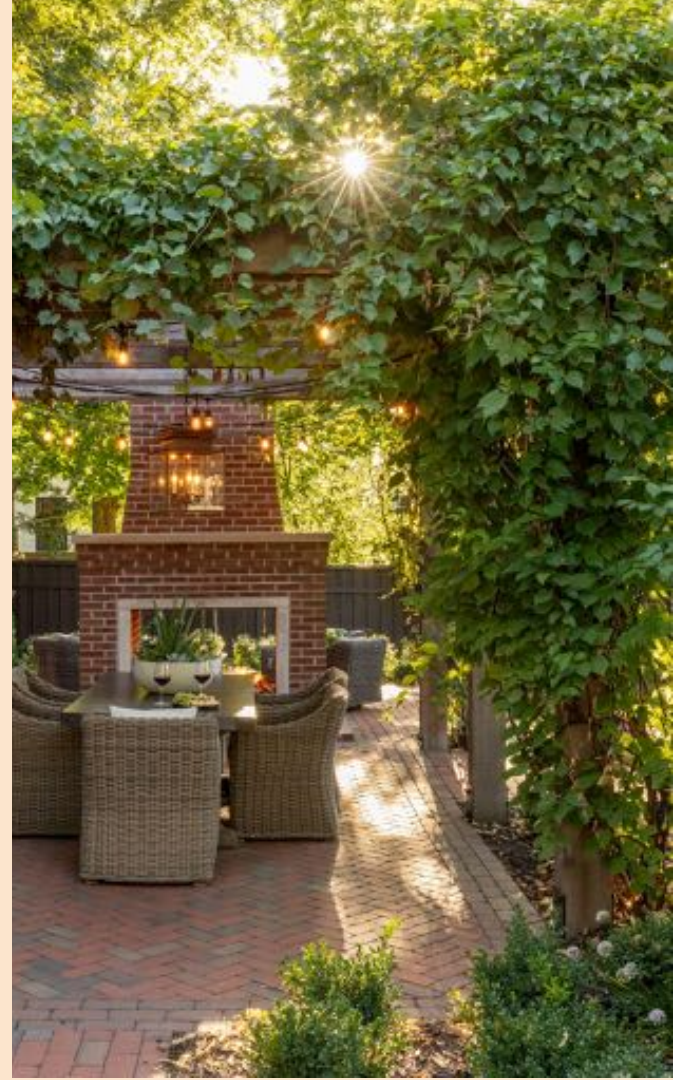
Functionality

The masonry fireplace was added to give them warmth and a bit of privacy from the neighbors. We extended the patio and design the fireplace to be a look-through. This is a gas unit that has 290,000 BTUS. This involved our HVAC team to connect gas piping under the garage, route gas line underground directly to fire pit, install a gas regulator, valves, and piping. We put it on a switch for easy on/off for colder days. In order to make the pool pergola with a swing that we installed safe and functionable, we put in two fond du lac full veneer columns around the pergola posts, on concrete footings.





Privacy was also important to the client. They wanted to feel privacy yet not formal or closed off in every square inch. They appreciate that they live in the city and still wanted little peaks of building throughout the yard. We spade in (3) 14' Tall Allegheny Serviceberry,(1)4"Skyline honeylocust and a 12' white pine to help give them that instant softness. The plants where a mix of formal boxwood and casual allium, salvia and nepeta. The color pallet is mostly white and purples with a splash of orange.





BEFORE



AFTER



BEFORE



AFTER

Innovation

They were looking for a swimming pool and entertaining space that felt lush and private. Working around the existing trees was important. They live on Summit ave and in a historic district. We had to get our materials approved by the board. They didn't have enough entertaining space on the upper patio so we extended the patio and added the fireplace. One of the challenges during this project was the site access. We entered from the alleyway and built a wooden ramp to get over the 18" tall curb. This project was done in phases so making sure we were thoughtful about the next phase was important, so we didn't need to undo anything. The grade was also a challenge and making sure we were being a good neighbor with the runoff



Key Features

- ❖ Fond-Du-Lac retaining wall with erosion fabric
- ❖ Saltwater swimming pool
- ❖ See-through masonry fireplace on concrete footings, all brick veneer with limestone mantel and cap
- ❖ Gas Firepit
- ❖ New patio around the pool deck, 900 sf of clay pavers, and 260 sf of limestone, all dry laid on 6" of class V and 1" of leveling sand.
- ❖ Ardeo Limestone Tumbled-Lemon Peel Finished poolside pergola with 2 Fond du Lac full veneer columns around the pergola posts, on concrete footings
- ❖ Pergola Lounging Swing





Client Satisfaction

Overall, the clients love their backyard. They mentioned they do projects all the time and this is by far their favorite one. They have family and friends over all the time and truly love their new space and updated gardens

