

NARI MINNESOTA  
2022 COTY AWARDS



## Mediterranean Meets Minnesota

Residential Exterior Over \$200,000





## CLIENT NEEDS

- Replace existing, rotting decks with increased usable space for entertaining
- Protection against weather, bugs, and sun for better work-from-home experience
- Capture ease of California living with Mediterranean style
- Preserve and integrate lake view

The clients have been renovating their 1960s back-split-level home on Prior Lake. After completing the interior spaces and exterior siding, they felt it was time to tackle their rotting and failing triple-decks that had become unusable due to safety concerns. Since the property slopes sharply toward the lake not far beyond the decks, these are the only outside areas where they can entertain and spend time with family, so it was important to maximize the footprint. The interior remodels lean strongly on Californian “bright, light, and airy” sensibilities with a nod to Mediterranean textures and Nordic simplicity, which they wanted to extend to their exterior. The wife, who works from home, requested a space where she could comfortably be outside regardless of weather and bugs as well as a space to practice yoga. It was also important to maintain the view to the lake from inside the home as these decks are all off main areas – the top deck off the kitchen, the middle deck off the family room, and the lowest deck off the den.

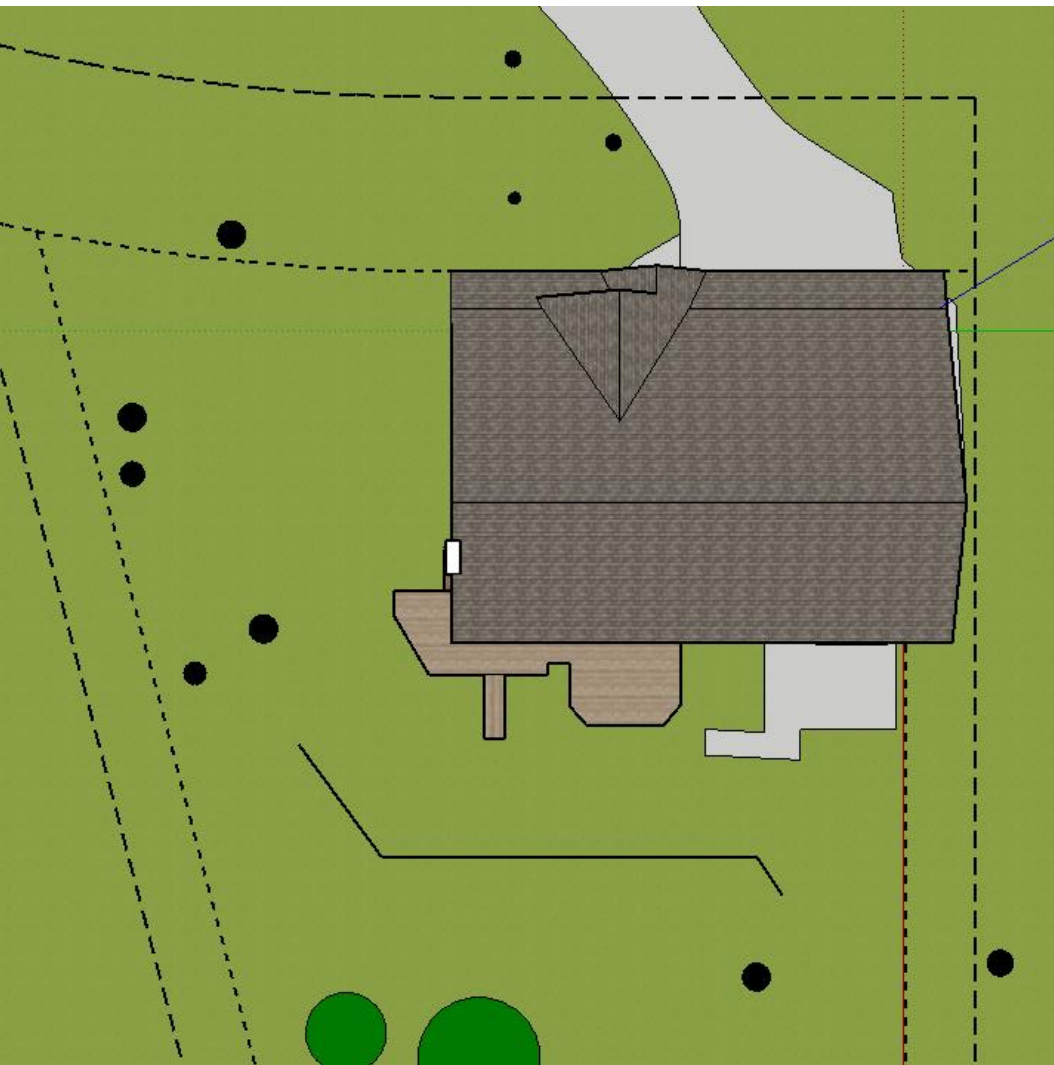


# BEFORE





## PLANS



EXISTING FOOTPRINT



3D MODEL OF DESIGN





**BEFORE**



**AFTER**





**BEFORE**



**AFTER**





**BEFORE**



**AFTER**





**BEFORE**



**AFTER**





## AESTHETICS

The project embodies a Mediterranean meets California vibe with influences of Nordic Hygge. This was achieved using a combination of stucco, tropical hardwood, Fir beams and columns at the pergolas, natural stone accents, and tile decking. The color palette was simplified to white with natural wood and grey accents. Arches are the main design feature incorporated throughout the design. Look for them in the lighting, columns, pergola brackets, and fireplace.

## FUNCTIONALITY

- Lower-maintenance materials replaced cedar decks and railings
- Enough space on each deck for furniture and different use spaces
- Back-level-split home restricts single level outdoor living







## CRAFTSMANSHIP

The two stacked decks are both water-tight below, which required multiple bladder systems with extensive drainage. The two pergolas were engineered for hanging swings. The lowest patio is brushed concrete (the better way to practice yoga on as requested by the homeowner) with a checkerboard stone inlay using two contrasting stones incorporated in front of the fireplace. The key feature that made the whole landscape come together was replacing a rotted timber retaining wall with a limestone retaining wall which sets off the view from the lake.







## INNOVATION

This winter project had a lot of challenges to overcome including harsh weather, complications with drainage due to a double dried-in deck system, crew changes and illness, and increased scope of work requested by the homeowner throughout construction. The corner stucco columns are oversized, not only to house the drainage but also the hidden track system for mobile screens on the middle deck.

## KEY FEATURES

- Phantom automatic screens and infrared heat
- IPE tropical hardwood decks and porcelain tile deck
- Westbury aluminum and glass railings
- Stucco-clad oversized columns
- DEK drain dried-in systems with T-N-G ceilings
- Gas fireplace and cubby for future electric fireplace
- Pergolas engineered for hanging swings and chairs
- Arch design highlighted across multiple elements





# Mediterranean Meets Minnesota

Residential Exterior Over \$200,000