



An aerial photograph of a modern house with a dark grey roof and a white gable end featuring a circular window. The house has a large, light-colored wooden deck with a dining table and chairs, and a lounge area with blue and white striped cushions. A curved stone patio leads to a circular fire pit with a wooden bench. The landscaping includes various plants, trees, and a curved stone wall. The text 'MINNETRISTA LAKE ESCAPE' is overlaid on the right side of the image.

# MINNETRISTA LAKE ESCAPE

Landscape Design and Outdoor Living  
Over \$250,000



# Overview

Our clients recently purchased a home on Lake Minnetonka that needed a little updating. After the interior of the home was renovated, the client hoped that we would be able to bring some functionality and beauty to the lackluster backyard. With an incredible view of the lake, the idea was to make as many functional and beautiful spaces as possible. The clients LOVE to host, so a variety of living and dining spaces were needed to accommodate all the different events they host. The backyard still needed to offer a cozy atmosphere for when it was just them and the kids. This space is unique in that it has a dramatic slope to the lake, so it was important to utilize all the space we had without disturbing the bluff line.





# Client Needs

- ❖ Update decking and railing
- ❖ Different types of spaces (ie. Dining, lounging, social)
- ❖ Sunken hot tub
- ❖ Improved lake shore riprap
- ❖ Level out the backyard grade
- ❖ Grill Station Lounge and play space







BEFORE

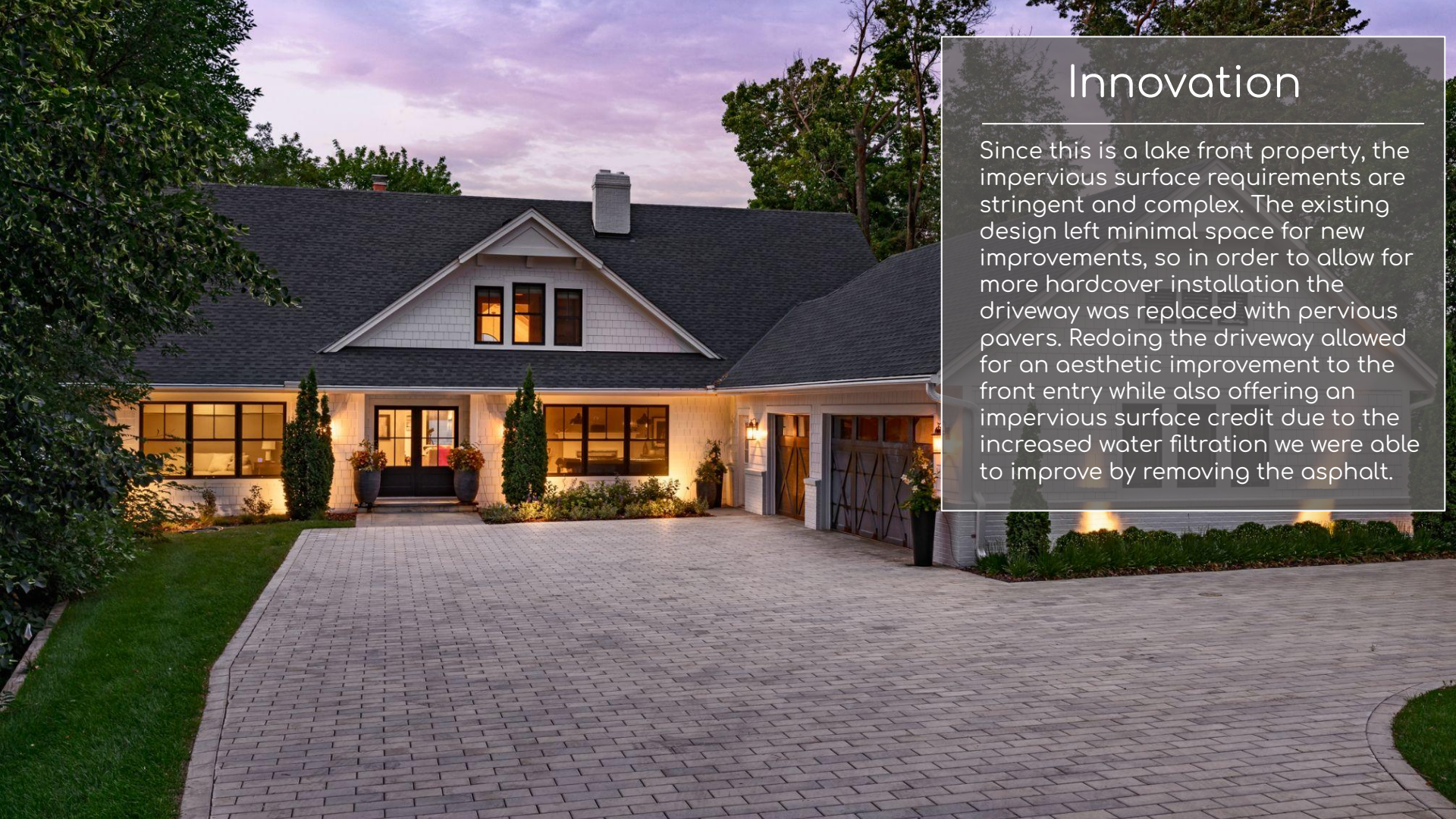


AFTER



AFTER



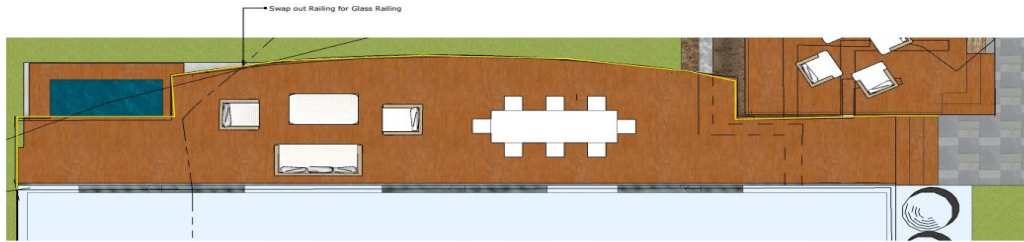


# Innovation

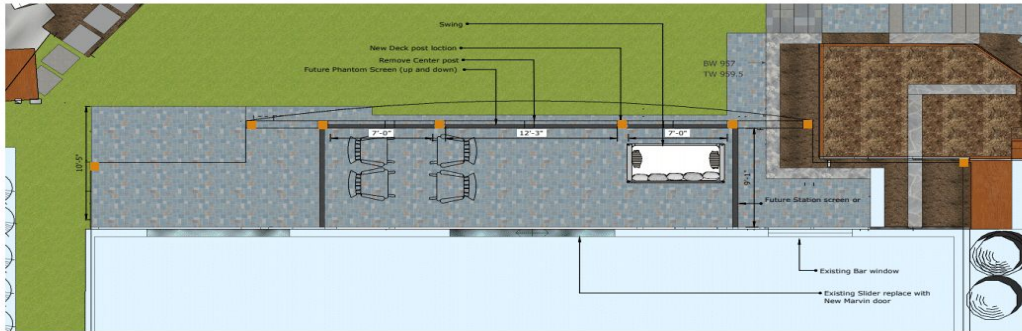
Since this is a lake front property, the impervious surface requirements are stringent and complex. The existing design left minimal space for new improvements, so in order to allow for more hardcover installation the driveway was replaced with pervious pavers. Redoing the driveway allowed for an aesthetic improvement to the front entry while also offering an impervious surface credit due to the increased water filtration we were able to improve by removing the asphalt.



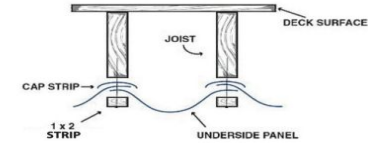
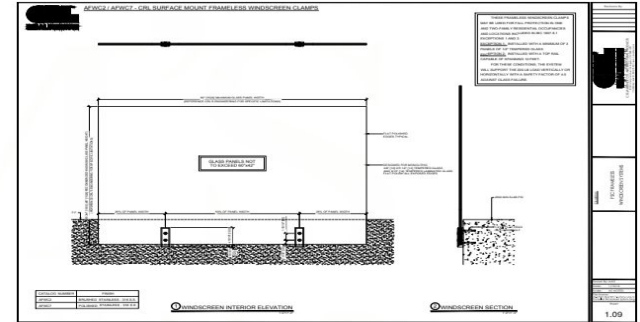
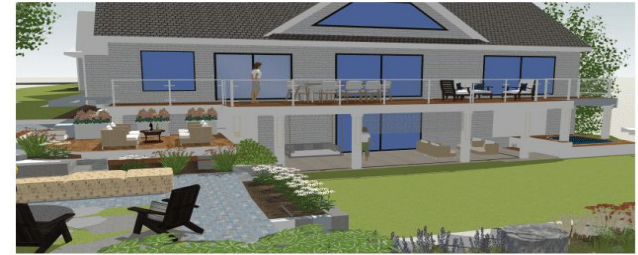
# Deck Plan



Upper deck level  
scale: 1/4"=1'



Lower deck level  
scale: 1/4"=1'



EXISTING DECK RAILING









# Functionality

Instead of trying to change the existing grade, the designer worked with the grade and built the firepit patio into the existing elevation. This created a natural path and terrace from the side yard into the backyard living space. As the client enters from the deck or side yard, they can access the grill, chase loungers, or firepit all within a few steps. This flexibility within the same path creates allows for a feel of coziness within the definition of the separate spaces.







BEFORE



AFTER



# Craftsmanship

The custom Ipe half circle bench was quite the creation. With the firepit location offering complete views of Lake Minnetonka, the designer felt strongly that the seating needed to respect the view. With the arc shape, the user can see the whole lake as well as interact with others around the firepit and lawn area.







## Aesthetics

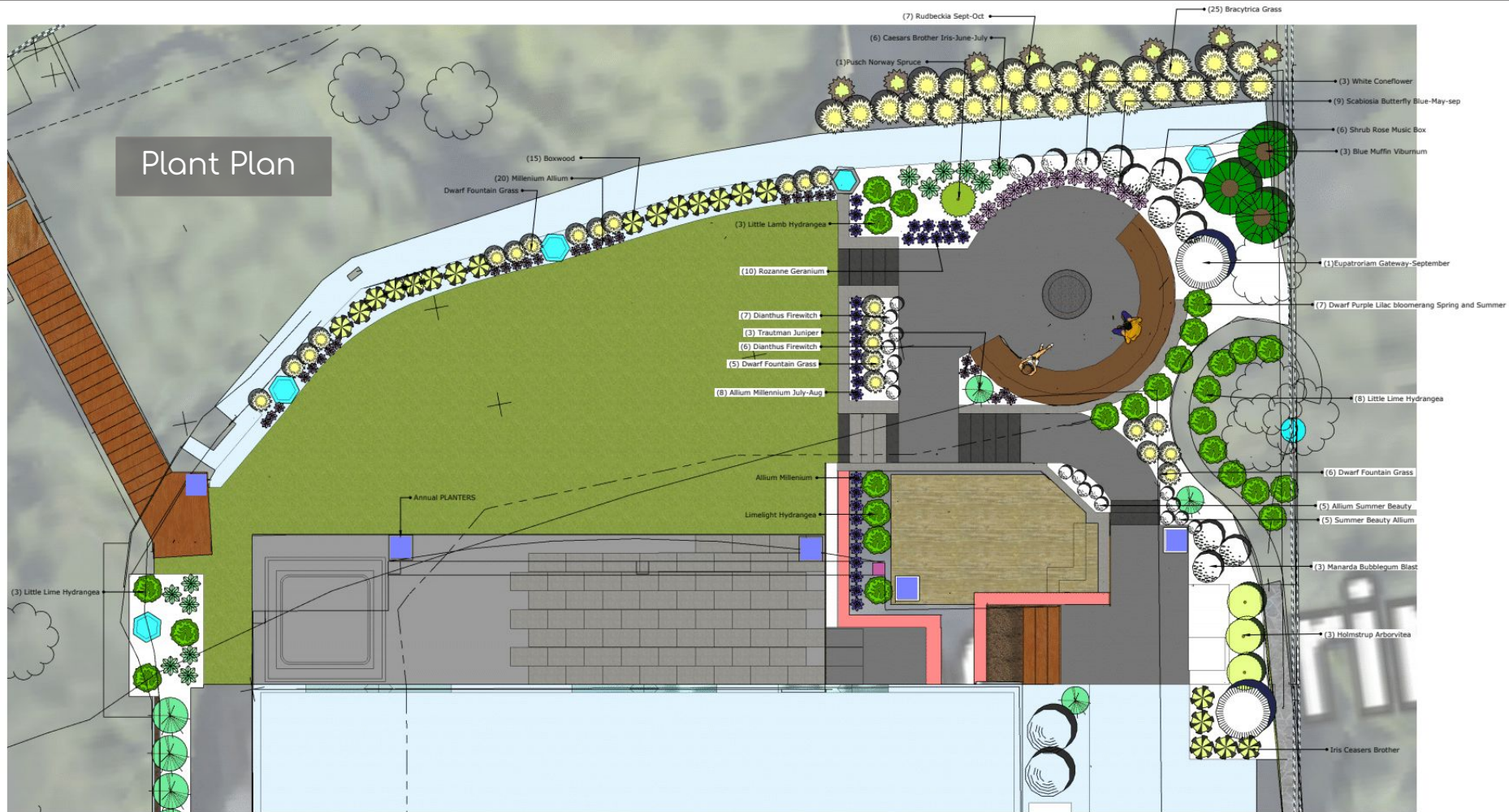
The client wanted a modern and coastal feel that kept the house/yard simple and classic. We used materials like Fon du lac, bluestone, and Ipe to create a classic palette of color and texture. Adding quartz in the kitchen and a new glass rail at the deck brought in some modern elements to the design.



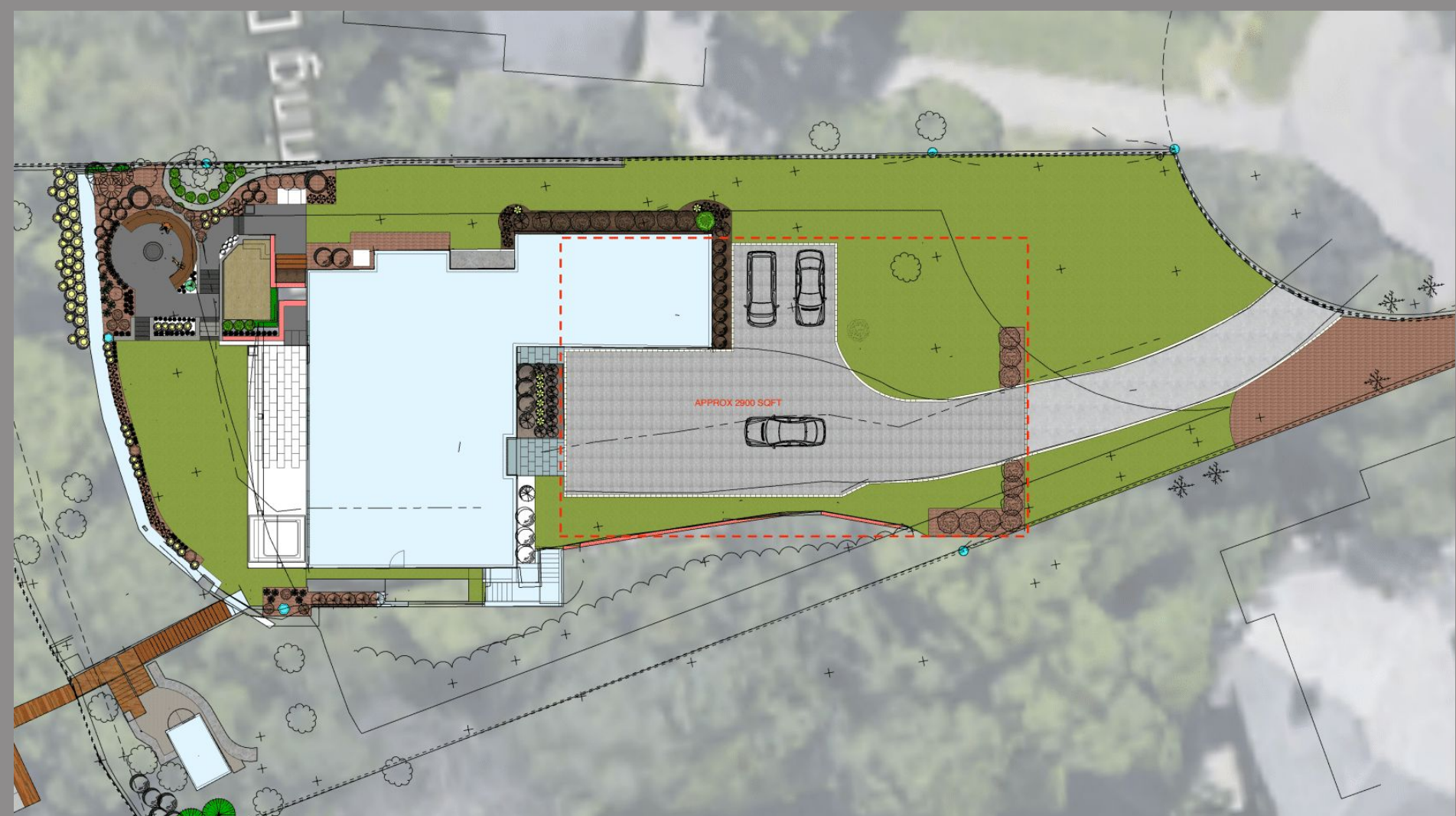




# Plant Plan











## Key Features

- ❖ Sunken hot tub in IPE surround
- ❖ Glass rail on new decking
- ❖ Grill Island with Diresco UV Quartz countertop
- ❖ Terraced patios
- ❖ Custom half circle carpentry bench
- ❖ Custom Basalt column post lights
- ❖ Pervious Paver driveway