

A modern living room interior featuring a brown leather sofa, a wooden coffee table, and a large potted plant. The room has light-colored walls and a grey carpet. A dark blue banner is overlaid on the top half of the image, containing white text. A small black arrow points to the right in the top right corner.

# Entire Home

under \$250,000

2022 CotY Awards

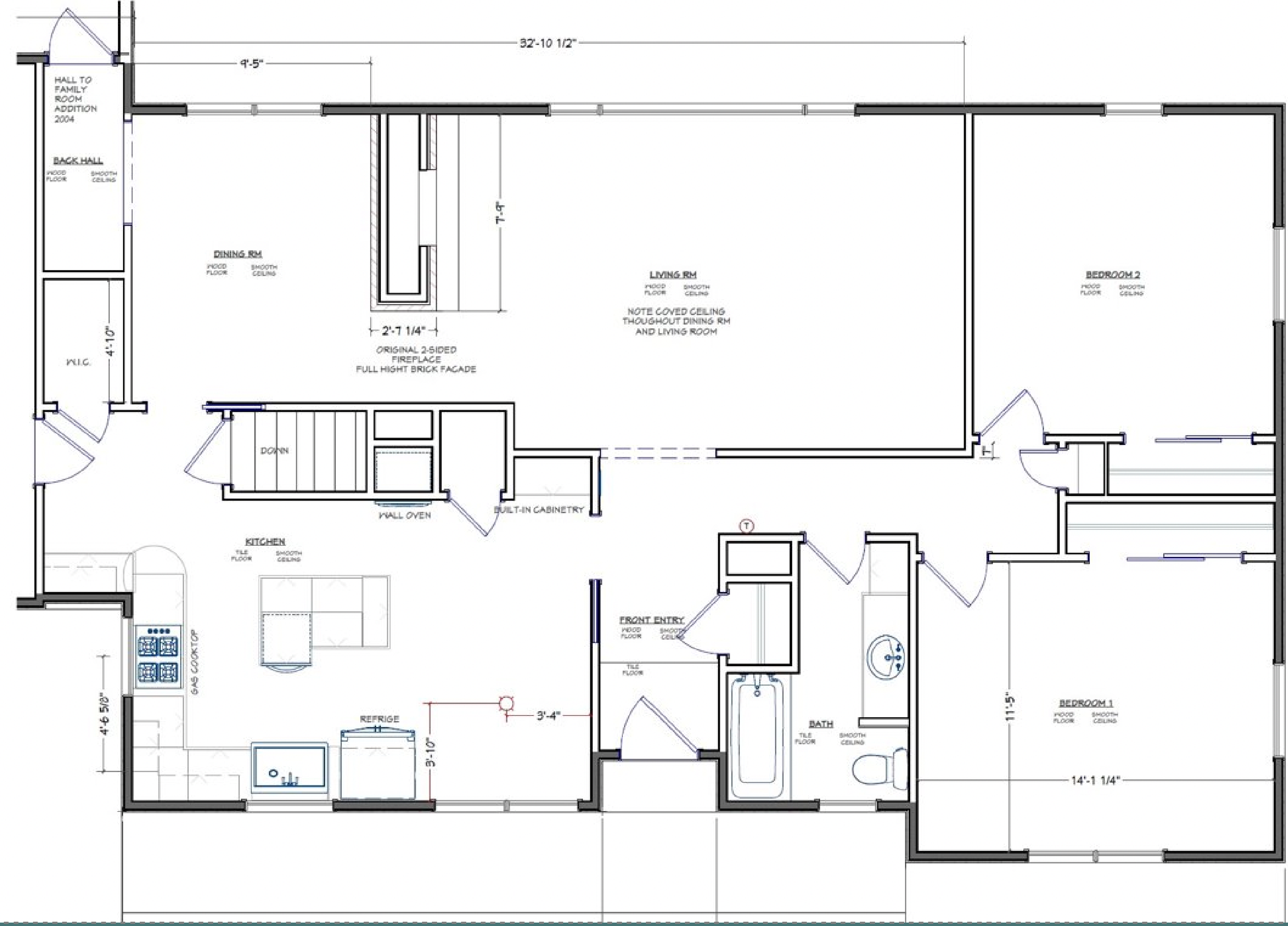


# Project Description

A 1956 Mid-Century Modern Rambler Home underwent a complete Main Floor transformation and Space Plan re-configuration. This project included creating a generous Open-Concept Kitchen with powerful sightlines front-to-back of the house, a Complete Owners Suite (Bedroom/Bathroom & Closet), brilliant Space Plan changes including the removal of a massive Masonry Fireplace and bearing wall between the Kitchen and Family room. This increased the living space and created a more proportionate space plan that is better suited for the couple's "family living and entertaining" desire. The creative introduction of a 2nd Bathroom on the Main Level within the existing footprint of the home will surprise you.

# Before

Floorplan









# Needs, Wants & Wishes

- Add ¾ Master Bath to Main Level
- Remodel & Re-Configure Existing Hall Bathroom – Remove Tub & Install Shower
- New Kitchen Cabinetry & Appliance Plan- Design a better functioning work-triangle/workspace
- Connect Kitchen with Dinette & Living Room
- Open Up Stairway Walls for sightlines

- Remove Masonry Fireplace & Chimney
- Refinish Flooring and Paint Walls in Kitchen/Living Room and Front Entry & Hallway
- Windows & New Patio Door Opening in Living & Dining
- New Interior Doors & Trim
- Beverage Bar/ Wine Bar Area

- Complete Mudroom Finish



# Before

Exterior



# Future Phase II After

Exterior

# Before

Living Room





# After

Living Room



# After

Living Room



# Before

Kitchen



# After

Kitchen





# Before

Kitchen



# After

## Kitchen





# After

## Kitchen



# After

Living Room





# After

Kitchen



# After

Kitchen



# Before

*Was Office Space*



# After

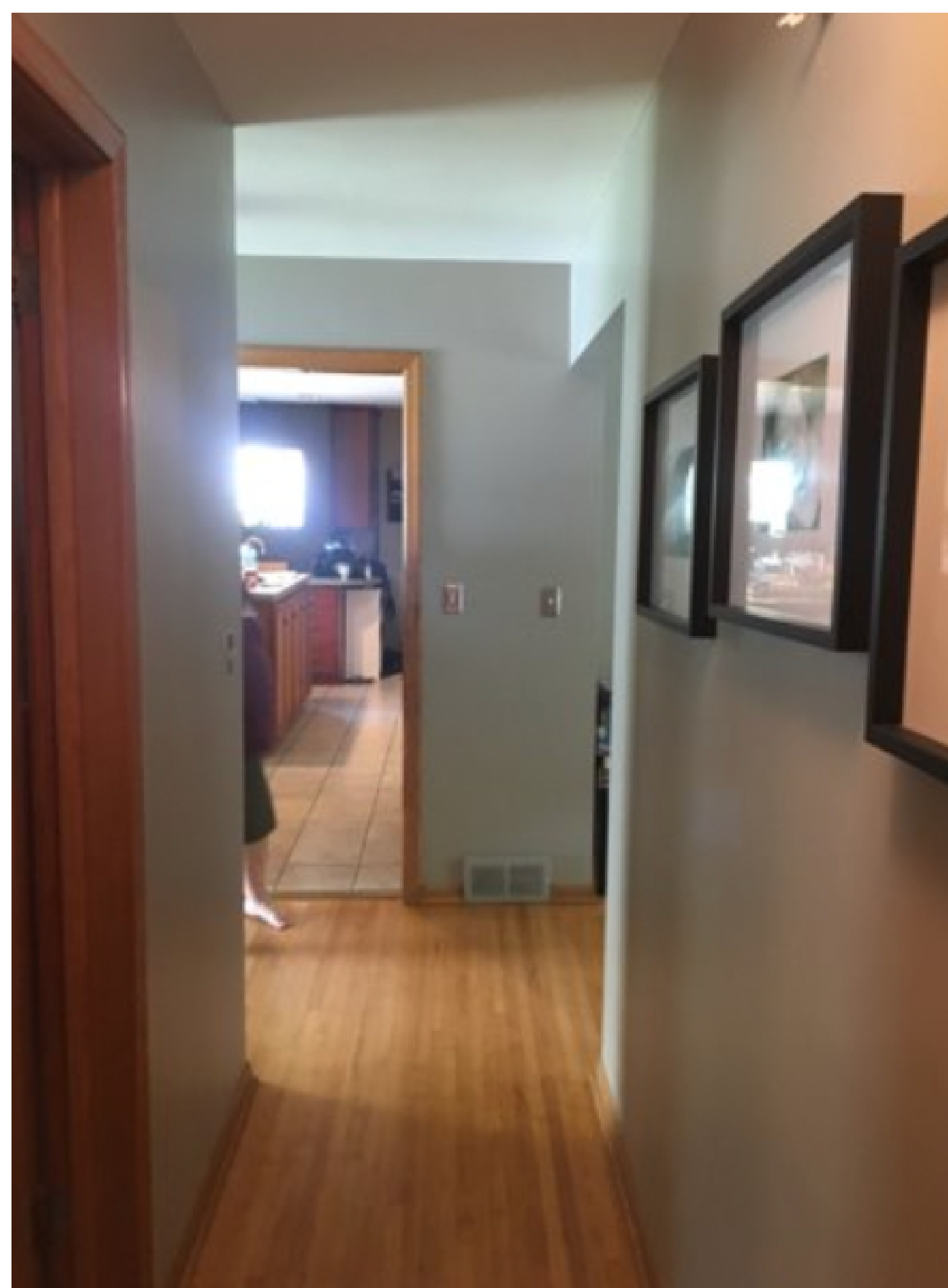
Dining Room





# Before

Hallway Space



# After

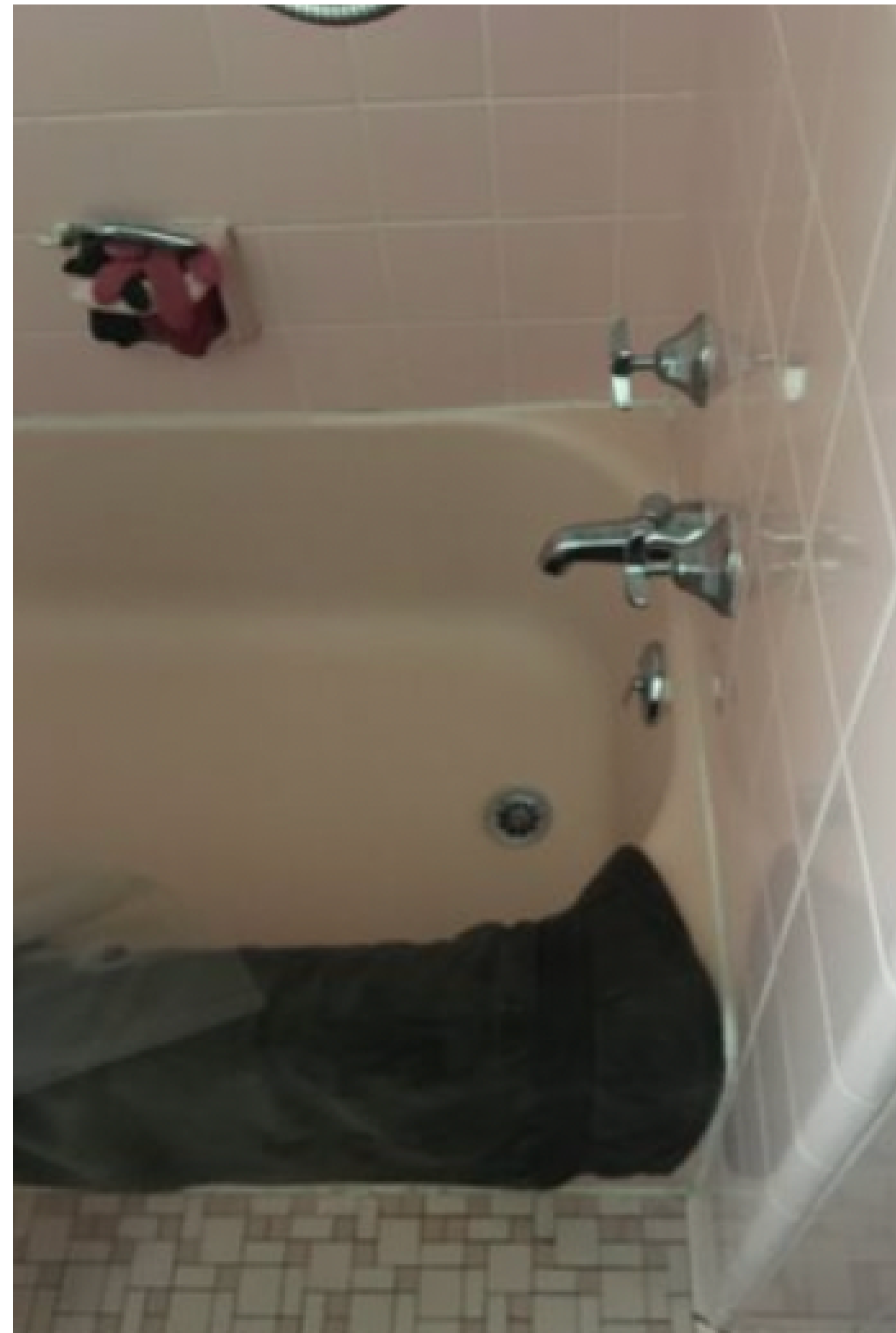
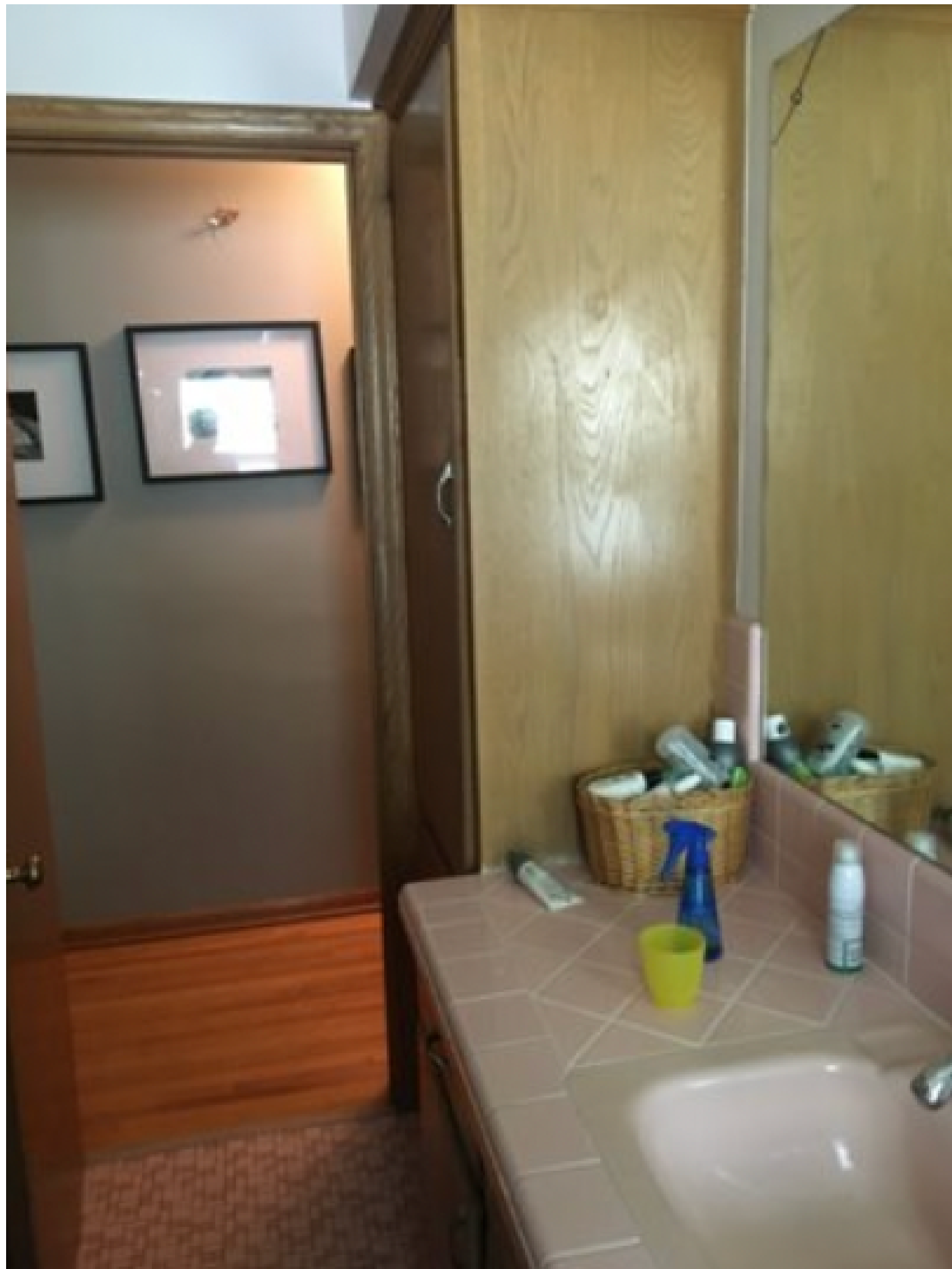
Hallway Space



*Brilliant repurposing of  
hallway space to  
accommodate 3/4 bathroom.*

# Before

Bathroom



# After

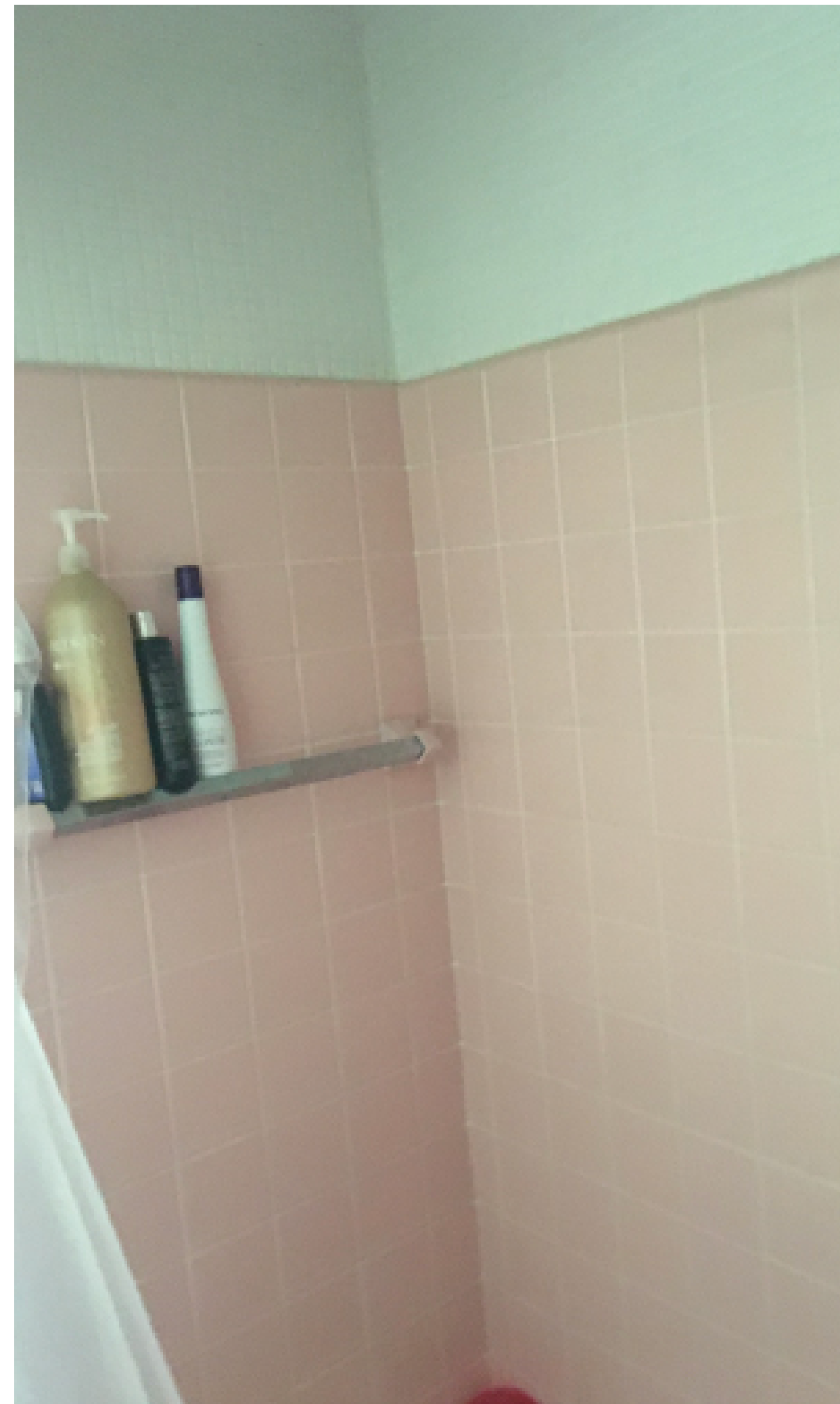
Bathroom





# Before

Bathroom



# After

Bathroom

