



# Residential Interior

## 100-250K

2022 Coty Awards

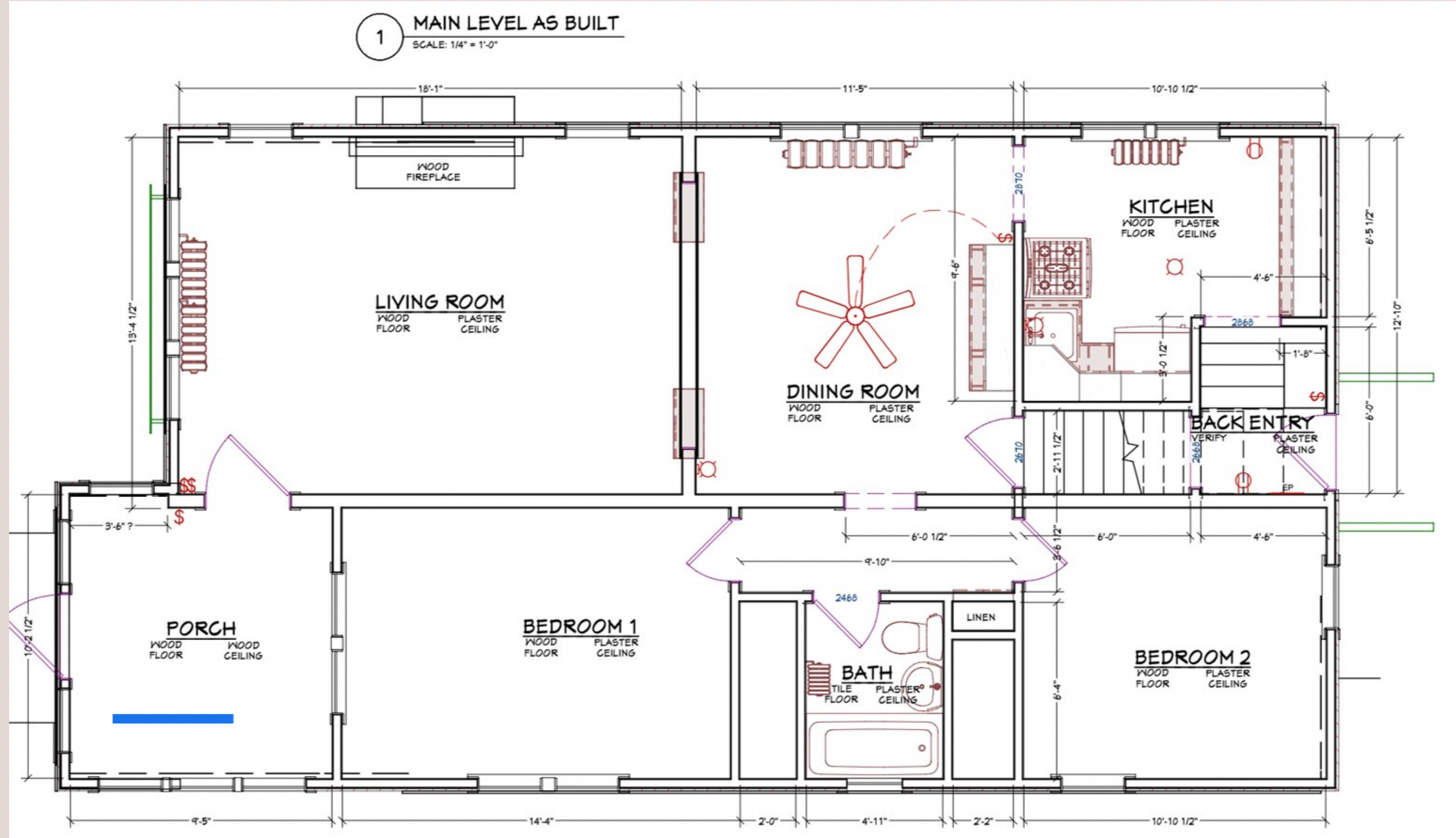


This 1926 Classic Period Craftsman Home is a “must see” for anyone who is wondering what to do with this style’s Kitchens. With a brilliantly creative and simple space plan transformation that added a cantilever addition and some critical 40SQF to the footprint of this Kitchen /Dining Room shows how a home of this vintage and size easily can become a forever home while staying true to the period and with a nod to the original architectural details.

# Project Description

# Before

## Floorplan

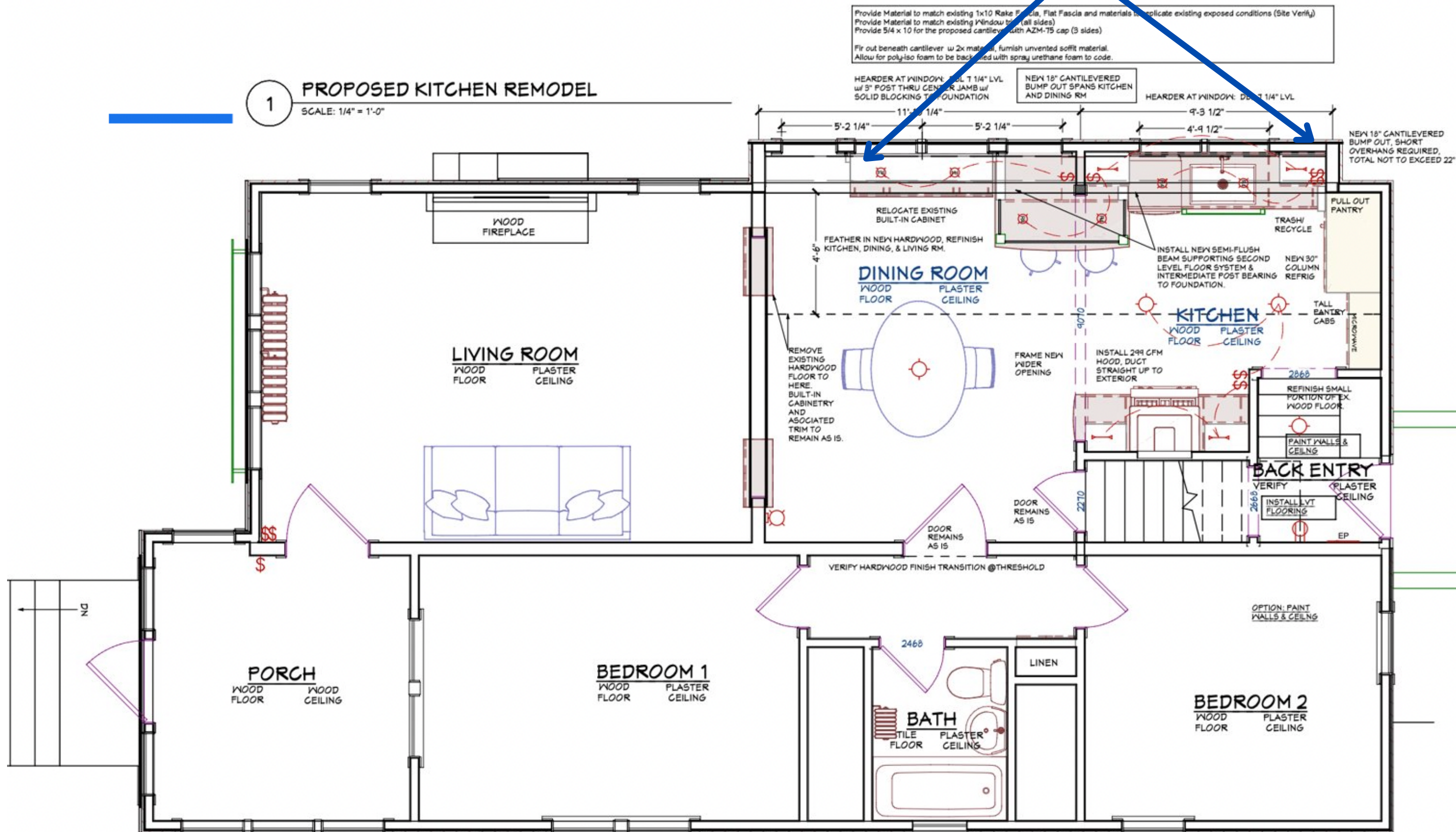


## 18" Cantilever Addition

1

### PROPOSED KITCHEN REMODEL

SCALE: 1/4" = 1'-0"



After  
Floorplan

# Needs, Wants & Wishes

- Re-Configure Kitchen/Dining Room with Cantilever Addition
- Peninsula Island/Bake Center/Breakfast Nook

- Better Connection & Sightlines between Kitchen/Dining

- Relocate Original Buffet Cabinet to South Wall



Before

Exterior

AFTER



After  
Exterior



# Before

Living Room



# After

Living Room



# Before

Kitchen



After  
Kitchen



# Before

Kitchen



After  
Kitchen



Before  
Living Room



After  
Living Room



Before  
Kitchen

# After

Kitchen





Before  
Kitchen



After  
Kitchen



# Before

Kitchen



After  
Kitchen



# Before

Kitchen



After  
Kitchen



After  
Kitchen



Before  
Kitchen

AFTER



After  
Kitchen



After  
Kitchen



After  
Kitchen



# Before

Rear Entry



After  
Rear Entry