

## Traditional with a Twist

When undertaking an ambitious multi-room remodel of their classic Edina home, our clients wanted to create a space that was comfortable, practical and family-friendly. But they also wanted to play with the unexpected, showcasing vibrant colors and designer touches for a modern take on traditional style.

Our clients bought the house in 2020 because of its location and size, knowing they could customize it to better suit their family of seven. The kitchen, kitchenette, living room, formal dining room, powder room, family room and mud room/laundry have been fully remodeled yet still feel natural to the home's classic style.

The kitchen was large but lacked a functional floor plan and an efficient work zone. The work triangle was disconnected and appliances were awkwardly located. An underused desk and large buffet occupied one whole wall. There wasn't enough island seating, and the finishes were dated and uninspiring.

The kitchen was brought to life with a huge navy island and vibrant red lanterns, and the layout was reconfigured to maximize function. A centrally located range replaced the wall oven and island cooktop. To create a more efficient work triangle, the sink was relocated to the island. The desk was replaced with a floor-to-ceiling pantry, and the snack counter at the end of the island was enlarged to accommodate additional seating.

The kitchenette had been closed off, connected by a small pass-through, making the space feel disjointed. By widening the pass-through and removing a closet, the kitchenette was opened to the main level, providing a natural flow to the home. New French doors are a beautiful focal point and provide access to the patio.

Remodeling the family room presented some challenges. Pulling up the carpet revealed there was no sub-floor underneath, only concrete slab due to the absence of a basement below. The concrete slab was higher than the adjacent kitchen sub-floor. To create a seamless transition, we added to the kitchen sub-floor to elevate it. We then glued the new hardwood flooring to the concrete. Updated built-ins allow for a larger television and nicely balance the existing fireplace surround.

Because every family of seven needs a main floor laundry room, we added a washer and dryer to the existing mud room. Soft blue lockers with metal mesh doors line two walls. The hexagon tile floor is a black-and-white custom flower pattern with electric in-floor heat.

Bold yet sophisticated patterns and colors are prevalent throughout the home. The powder room was given an elegant upgrade with bronze fixtures and vivid patterned wallpaper. The original oak floors were refinished throughout and the main floor updated with fresh paint and lighting. The result is a unique and lively space, customized for a busy family.



### **Kitchen | BEFORE**

The kitchen was large, but it lacked a functional and efficient floor plan. The work triangle was disconnected and appliances were awkwardly located.



### Kitchen | AFTER

The kitchen layout was reconfigured to maximize space and function.  
A huge navy island anchors the space.



### Kitchen | **BEFORE**

Appliances were spread out, and a large buffet took up one whole wall.



### Kitchen | AFTER

The wall oven and island cooktop were replaced with a centrally-located range featuring a herringbone mosaic tile backsplash and shiny brass accents. A new floor-to-ceiling pantry was added.



### Kitchen | BEFORE

The island lacked sufficient seating for family and friends.



### Kitchen | AFTER

The snack counter at the end of the island was enlarged to accommodate additional seating.



### Family Room | BEFORE

Remodeling the family room presented some challenges when it was revealed that the flooring was uneven.



### Family Room | AFTER

After leveling the flooring, updated built-ins were added to allow for a larger television and balance the existing fireplace surround.



### **Mud Room/Laundry | BEFORE**

Prior to remodeling, the laundry room was located in the basement.



### **Mud Room/Laundry | AFTER**

A washer and dryer were added to the mud room to create a main level laundry room. Upper cabinets are perfect for storing sporting goods and seasonal items. Shoes fit neatly in cubbies below.



### **Kitchenette | BEFORE**

The kitchenette had been connected to the main level by a small pass-through, making the space feel disjointed.



### Kitchenette | AFTER

By widening the pass-through and removing a closet, the kitchenette was opened to the main level, providing an open and natural flow to the home.



### **Kitchenette | BEFORE**

Dated built-ins in the kitchenette took up one whole wall.



### Kitchenette | AFTER

The built-ins were replaced with French doors that allow for the flow of natural light and provide convenient access to the backyard and patio.



### **Powder Room | BEFORE**

The main level powder room lacked custom finishes and design.



### **Powder Room | AFTER**

The powder room was given an elegant upgrade with bronze fixtures and vivid patterned wallpaper.



### Living Room | BEFORE

Prior to remodeling, the home featured a traditional living room with light oak hardwood floors.



### Living Room | AFTER

The original hardwood floors were refinished.  
The space was modernized with fresh paint and lighting.



### **Formal Dining | BEFORE**

The home featured a traditional formal dining room inside the front entry.



### Formal Dining | AFTER

The space was updated with vibrant colors while maintaining the home's classic feel.



BEFORE



DURING



AFTER

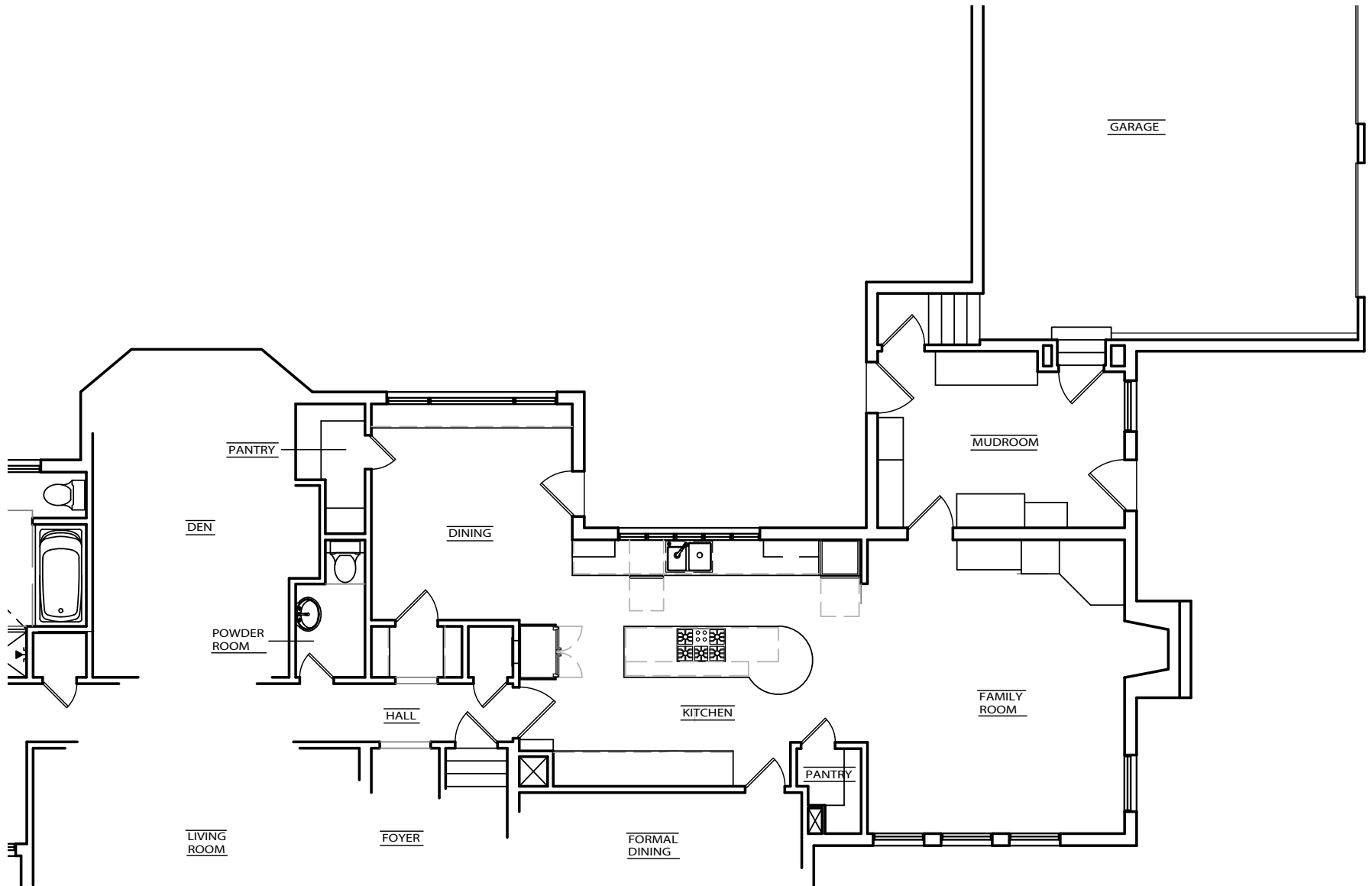
Range  
BEFORE | DURING | AFTER



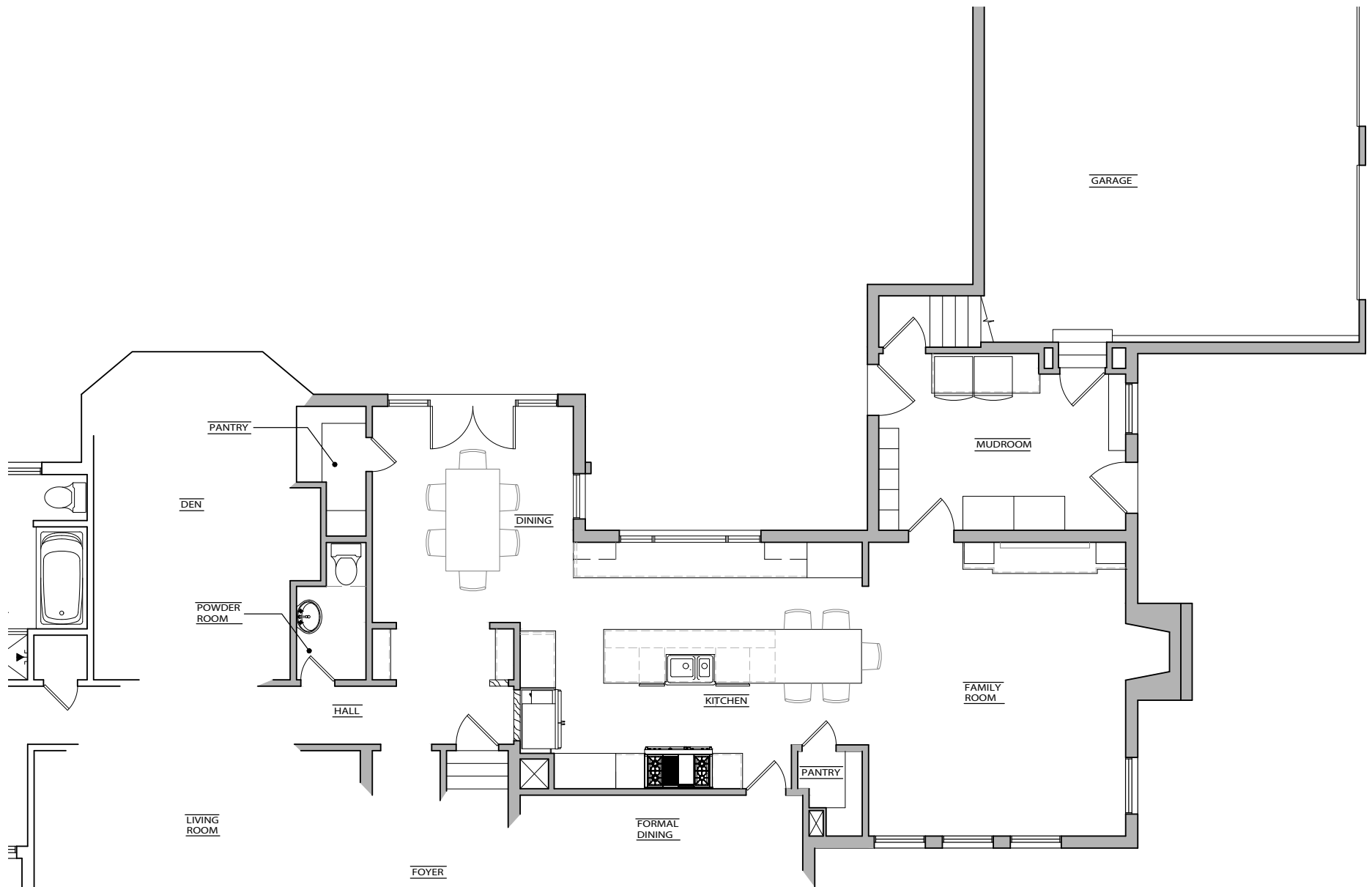
Entertainment Center  
BEFORE | DURING | AFTER



Expert Craftsmanship



Floor Plan | BEFORE



Floor Plan | AFTER