

Kitchen Inspiration

The remodeling journey for this 1920s Edina home began with a master bath renovation in 2019. Our clients were so happy with the results that they began planning another, bigger project – their kitchen.

Prior to remodeling, the kitchen felt dark and closed off. A wall separated the kitchen and dining room, making the space feel smaller. Finishes were dated and the kitchen lacked updated amenities and adequate custom storage. The owners, both in creative professions, loved entertaining and wanted their home to reflect their taste and personality. They envisioned better kitchen space planning, a more open main level and interesting, unexpected finishes.

To open the space, the wall separating the kitchen and dining room was removed and replaced with a peninsula. Adding the peninsula created a natural connection between the rooms while keeping them distinct. It also made the main level feel much larger and more spacious. The peninsula provides additional prep space and can serve as a buffet when entertaining. On the dining room side, a built-in bench provides seating as well as space-saving storage.

In a smaller kitchen, space-saving solutions are key. An above-the-sink wine rack and wine glass holder was a creative way to save on counter space. To provide more storage, the pantry and other cabinets were extended to the ceiling. To facilitate access to items stored higher up, a custom cabinet was designed specifically to house a step stool.

To create a more efficient work zone and functional floor plan, appliances were relocated. After eliminating the divider wall, the range was moved to a more centrally located spot next to the refrigerator. With better space planning, we were even able to find some lost closet space for the owner's office behind the range wall!

Eight feet of functional cabinet and counter space was created by replacing the bay window with a bump-out. Adding the bump-out enlarged and opened the walkway from the back steps into the kitchen. With the large rear window, visitors can now walk in the front door and see all the way through to the beautiful backyard.

Blue-green cabinets feel fresh and unexpected. The owners love the eclectic mix of rustic and modern finishes. Natural, earthy elements nicely contrast stainless steel appliances, glass front cabinets and white quartz. The cast iron farmhouse sink sits below an enlarged window to draw in light. The shape and lines of the backsplash tile and the airy pendants contribute to the open feel. Our clients had planned to paint the accent brick white; however, upon seeing its natural beauty, opted to keep it as is.

The remodel presented some challenges. The bump-out required additional engineering due to the amount of framing and HVAC involved. Ultimately the remodel achieved our clients' goal of a more open and functional kitchen that reflected their taste and personality. "We've been through home improvement projects in the past, and this one blew them all away," said the owners. "This was truly a joy to see come together."



Kitchen | BEFORE

Prior to remodeling, the kitchen felt dark and closed off.



Kitchen | AFTER

The kitchen was opened to the main level.
The space feels larger and natural light is abundant.



Kitchen | BEFORE

A wall separated the kitchen and dining room, making the space feel smaller.



Kitchen | AFTER

To open the space, the wall separating the two rooms was eliminated and replaced with a peninsula.



Kitchen | BEFORE

Finishes were dated, and the kitchen lacked adequate prep space and custom storage. The owners wanted their home to reflect their taste and personality.



Kitchen | AFTER

The kitchen was updated with blue-green cabinets and a mix of rustic and modern finishes. To maximize storage, the pantry and other cabinets were extended to the ceiling.



Kitchen | BEFORE

The kitchen work zone was inefficient.



Kitchen | AFTER

After eliminating the divider wall, the range was moved to a more centrally located spot.



Kitchen | BEFORE

The kitchen lacked the updated amenities our clients desired.



Kitchen | AFTER

Natural, earthy elements nicely contrast stainless steel appliances, white quartz and sleek backsplash tile.



Kitchen | BEFORE

In a smaller kitchen, space saving solutions were key.



Kitchen | AFTER

A custom cabinet was designed to hold a step stool for accessing items stored higher up (left). An above-the-sink wine rack and wine glass holder was one way to save on counter space (right).



Bump-Out | BEFORE

Space was at a minimum, and the walkway from the back steps into the kitchen was awkward and tight.



Bump-Out | AFTER

Eight feet of functional space was created by replacing the bay window with a bump-out. Adding the bump-out enlarged the steps and walkway into the kitchen.



Kitchen | BEFORE

The owners envisioned a more open main level and better kitchen space planning.



Kitchen | AFTER

With the large rear window, visitors can now walk in the front door and see all the way through to the beautiful backyard.



Peninsula | BEFORE

The wall separating the kitchen and dining room made the home feel smaller.



Peninsula | AFTER

The wall was removed. The new peninsula creates a natural connection between the rooms while keeping them distinct.



Peninsula | BEFORE

The wall hindered the flow of natural light.



Peninsula | AFTER

Airy pendants contribute to the open feel.



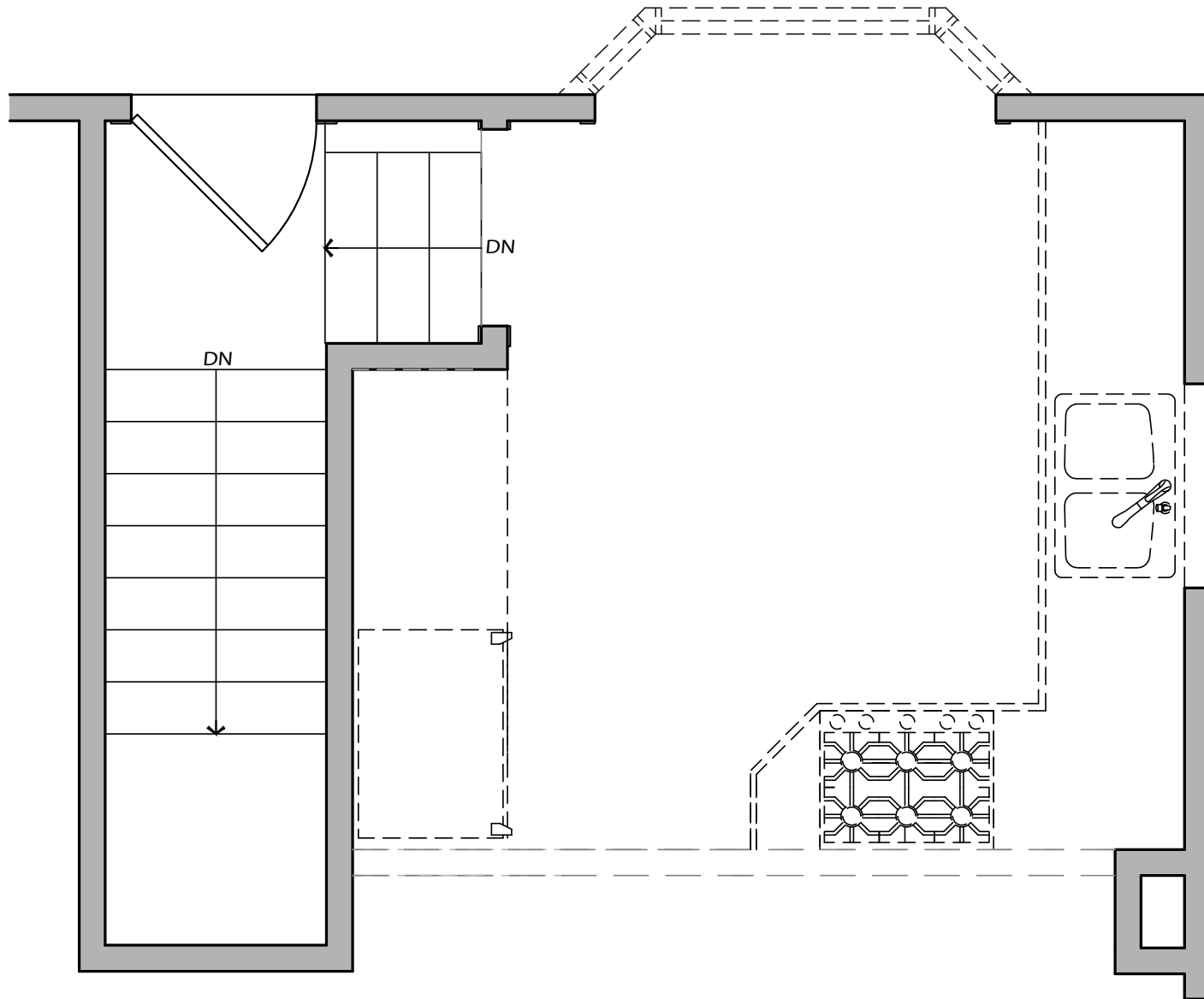
Expert Craftsmanship



Kitchen Renderings



Kitchen Renderings



Floor Plan | BEFORE



Floor Plan | AFTER