

Garage-to-Home Office Conversion

Our clients in the Macalester-Groveland neighborhood of Saint Paul had been working from home since the pandemic started. Both professionals, they were in need of a larger, dedicated home office. They had no extra space in their home, and their smaller city lot did not allow for an expansion. We needed to find a creative solution within their existing footprint to create the home office our clients desired.

The home had both an attached garage, accessed via the kitchen, and a second, stand-alone garage. The stand-alone garage was where they kept their vehicles. The attached garage was currently being used as storage for bicycles, garden tools, boxes of used clothing, a freezer – basically everything but a car. However, it was large and spacious with plenty of potential. The solution became converting their attached garage into a home office.

It was a complicated transformation, but once completed, the new interior room is exactly what our clients envisioned – a fully insulated and temperature-controlled office with plenty of space for two people to work comfortably.

The idea was born when the aging lift-up garage door needed to be replaced. The owners thought French doors would look nicer, and from there decided to reimagine the entire space as a multipurpose room/office. The French doors serve as an inviting back entrance with a small nook where family members can hang their coats and sit on a bench to remove their shoes.

The two side walls of the office are lined with custom cabinets and long matte granite counters that serve as desks. Desk drawers and cabinets are located beneath the counters, offering plenty of room for storage. Additional cabinets have been installed above the desks, framing new windows on each side.

The existing ceiling was ripped out to take advantage of the pitched roof. Bright white beams support the roof and walls. Insulation and new windows were included for energy efficiency. Two skylights allow for natural light, and a ceiling fan keeps the space comfortably cooled.

This unique project presented some challenges. The garage floor had to be leveled before the installation of a wood subfloor, spray foam and the equipment for a heated floor. Just to remove the ceiling, the structure needed modifications and engineering.

Converting an attached garage into an interior room is something people may not think is feasible. Our clients are thrilled with their new functional space. They love the natural light that their old basement office did not offer, and appreciate the spacious desk surfaces where they can spread out when working.

They recently moved out while their kitchen is being remodeled, but are looking forward to getting back into their home to enjoy their new spaces. “We like the company’s craftsmanship, and they stand behind their work,” the owner said.



Garage | BEFORE

The Saint Paul home possessed an attached single-car garage and a second, stand-alone garage.



Office | AFTER

Our clients were in need of a dedicated home office. With a small lot and no space to add on, the solution became converting their attached garage into a home office.



Garage | BEFORE

The attached single-car garage could be accessed via a door to the kitchen.



Office | AFTER

Easily accessed, the new office is fully insulated and temperature-controlled with plenty of space for two people to work comfortably.



Garage | BEFORE

The attached garage was currently being used as storage for bicycles, garden tools, boxes of used clothing, a freezer – basically everything but a car.



Office | AFTER

A refrigerator and pantry eliminate the need to interrupt work for lunch, snacks or beverages.



Garage | BEFORE

The attached garage was large and spacious with plenty of potential.



Office | AFTER

Custom desks line each wall. Drawers and cabinets are located beneath the counters, offering plenty of room for storage.



Ceiling | BEFORE

The existing ceiling was ripped out to take advantage of the pitched roof.



Ceiling | AFTER

Bright white beams support the roof and walls.
Insulation and new windows were included for energy efficiency.



Office | AFTER

The office features luxury vinyl plank flooring with in-floor heat.



Office | AFTER

The aging lift-up garage door was replaced with mahogany French doors with beveled water glass inserts.



Office/Mud Room | AFTER

A nook near the door serves as a mud room with bench seating, floating shelves, cubbies and hooks, all a rich stained birch.



Office | AFTER

The office features all the comforts of home while providing a professional, quiet and dedicated space for work. Best of all, there's no commute!



BEFORE

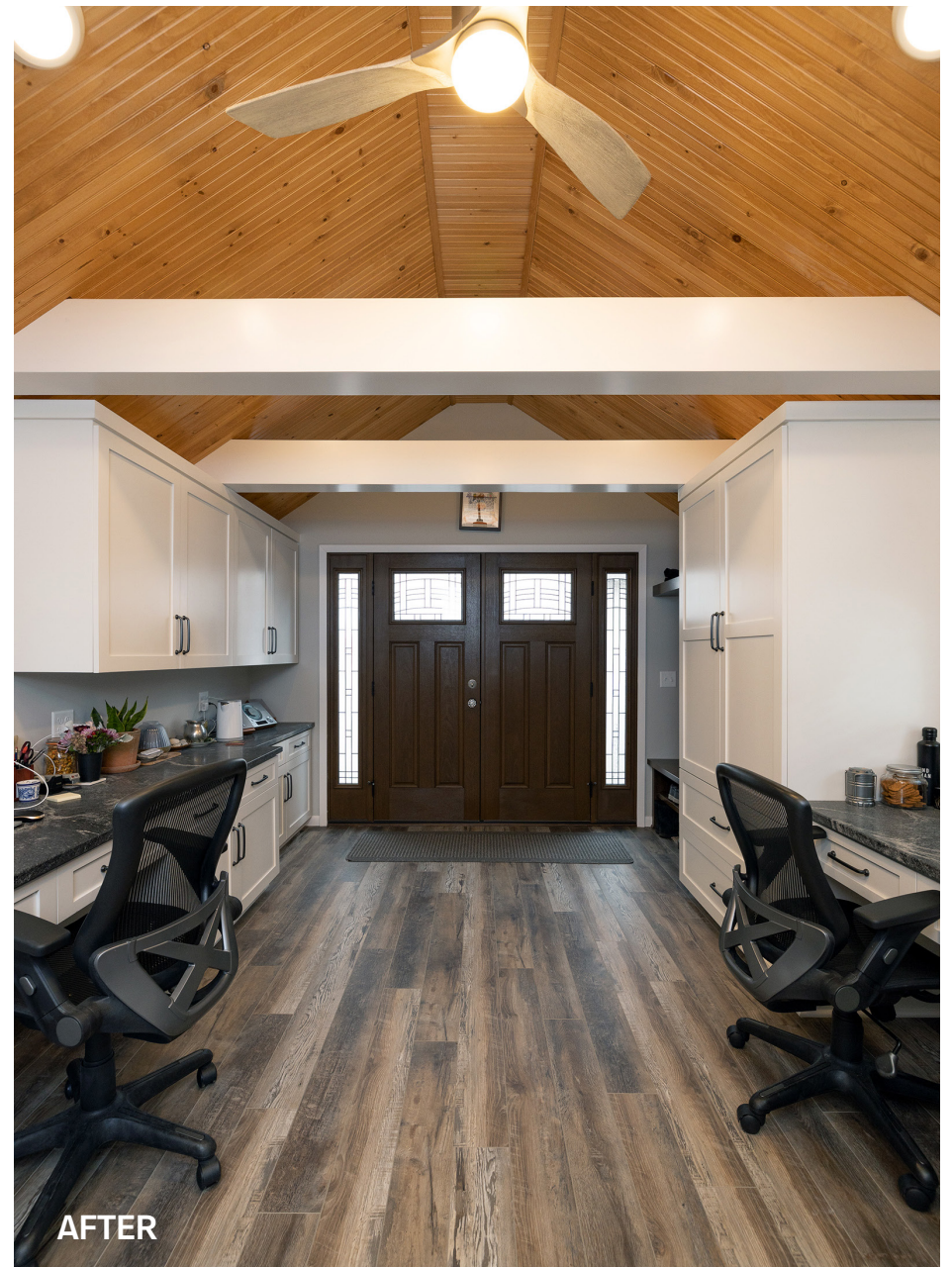
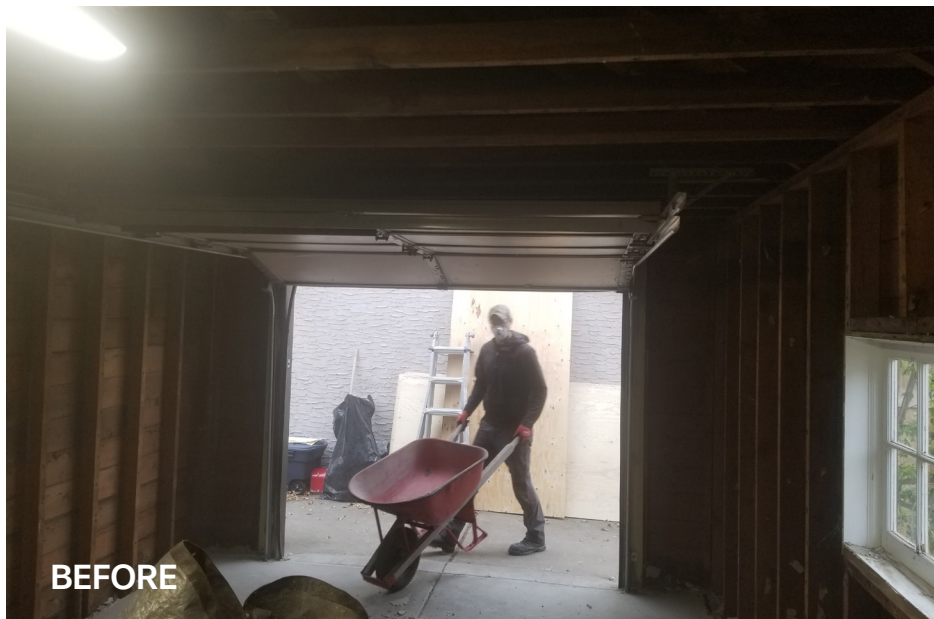


DURING

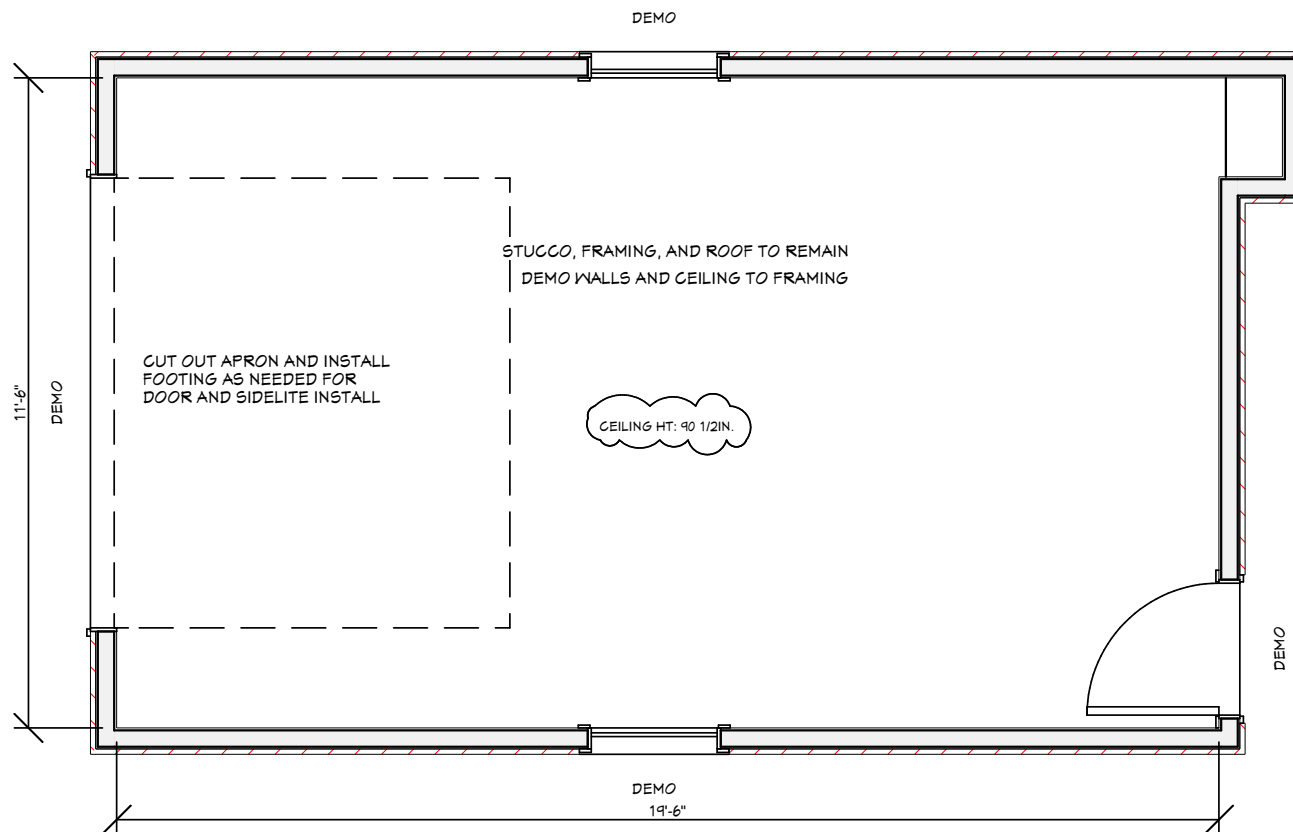


AFTER

**Facing North
BEFORE | DURING | AFTER**



Facing South
BEFORE | DURING | AFTER

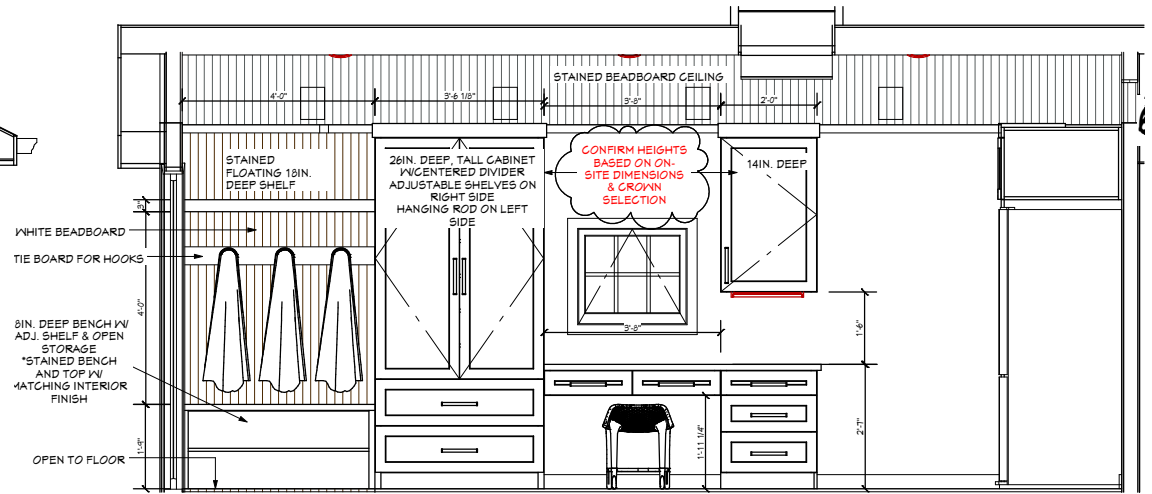
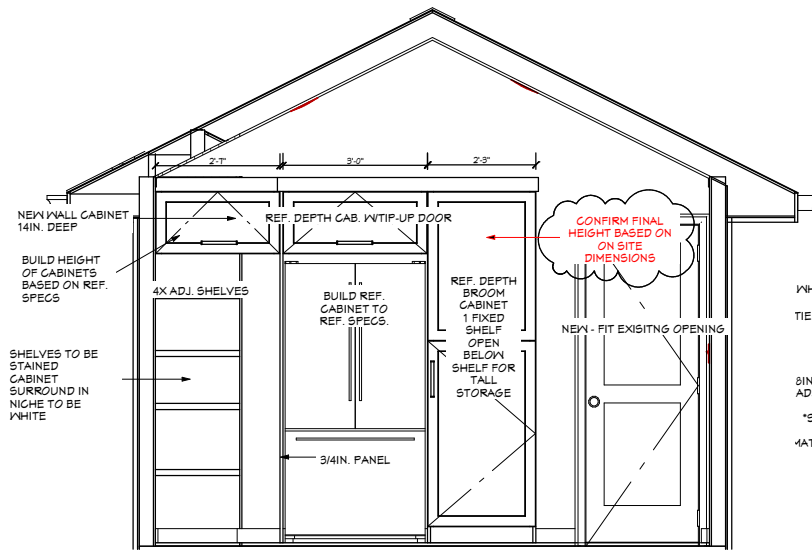


Floor Plan | BEFORE

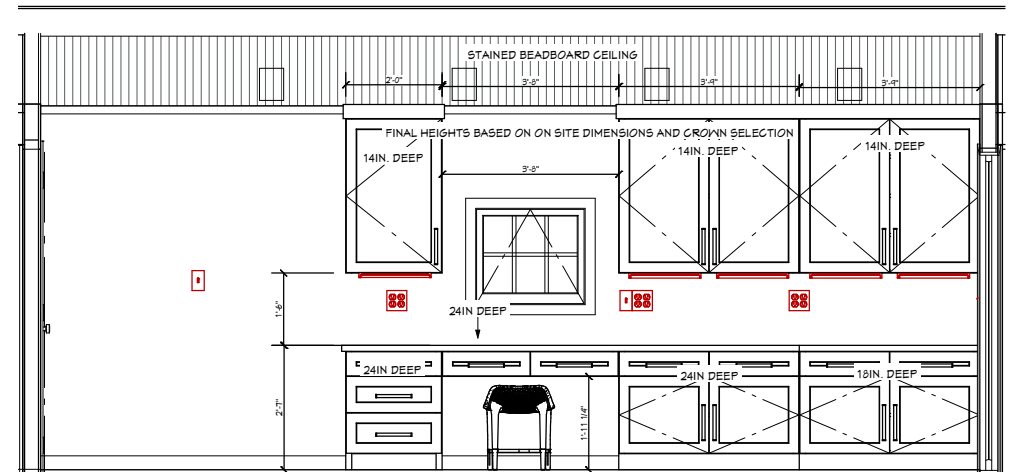


PRELIMINARY PERSPECTIVES
NO SCALE

Renderings



NOTE: FINAL HEIGHTS TO BE
DETERMINED BASED ON SITE
MEASUREMENTS AND CROWN
SELECTION



PRELIMINARY ELEVATIONS

SCALE: 1/2" = 1'

Elevations



Expert Craftsmanship