



LET THE LIGHT IN KITCHEN

RESIDENTIAL KITCHEN OVER \$150,000



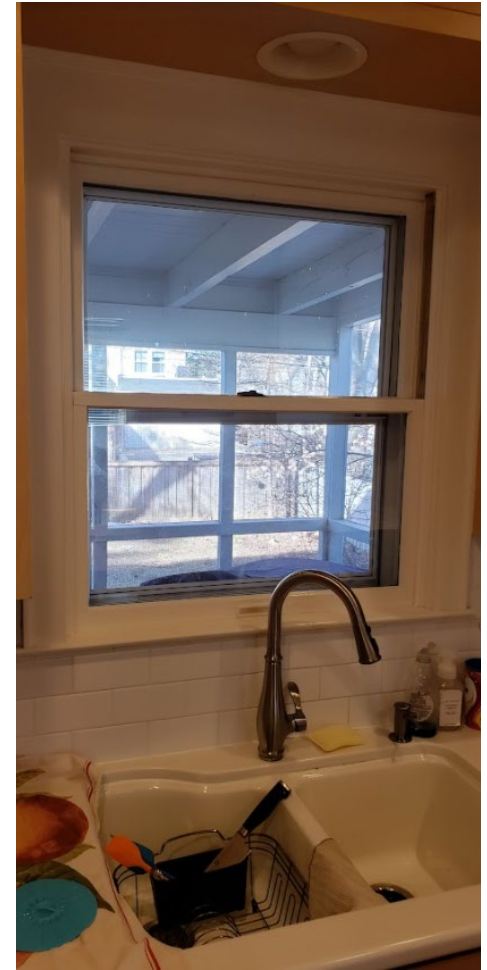
Client Needs

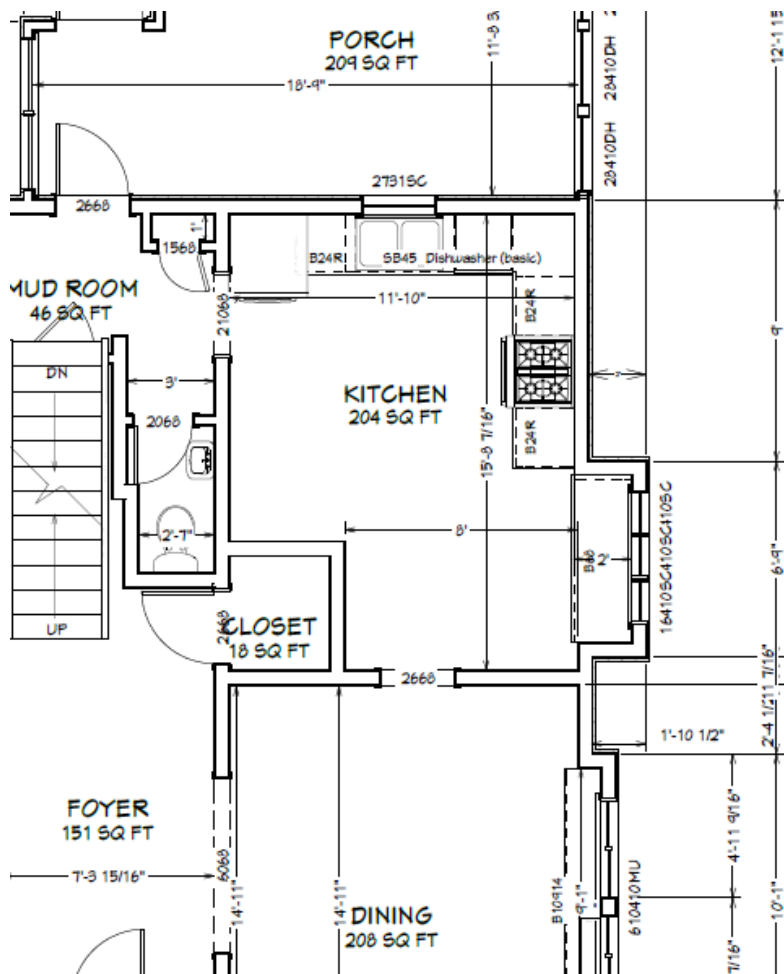
This busy family of four needed a complete kitchen overhaul. The room was just too narrow to accommodate regular depth cabinets and storage was a real problem. As part of a three-story addition, they wanted a modern, light and spacious kitchen.

Here's what they needed in their new kitchen:

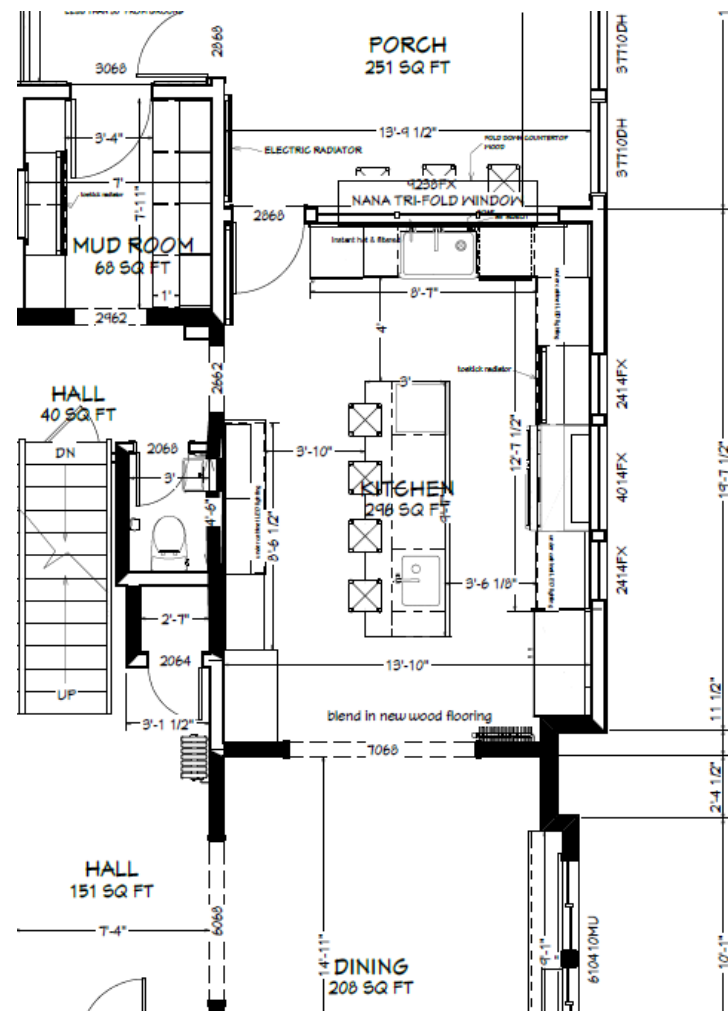
- Create a space that had lots of natural light and utilizes the space better.
- While the current kitchen was large, it lacked the space for an island.
- They had a small cart table in the center that they could not sit at, and they needed seating and more counterspace on the island.
- They did have a banquet seating nook, which was fine for smaller kids to squeeze into, but now that the kids were getting bigger it was more of a challenge.

Before





Before



After



Functionality

- Designed a layout that maximized the kitchen space.
- Installed windows and a door that opens into the four-season porch so that the space can function as one large area.
- Widened the opening into the dining room from a 3' opening to a cased 7' opening. This allows the light to stream from the large windows in the four-season porch all the way through the kitchen and into the dining room.
- Moved the hall closet to a different location to add space to the kitchen so we could use standard width cabinets and countertops, as well as adding a full-sized island with seating for four to six people.
- Added an instant hot water and purified cold water faucet next to the main faucet so they can eliminate a kettle for making hot beverages. This also eliminates a water dispenser in the refrigerator.
- Utilized soft close doors and drawers with cookie sheet dividers, spice racks, trash, and pantry pull-outs. Since the cabinets go all the way to the ceiling, there is ample storage for all their kitchen appliances.
- Commercial sized type appliances mean that the family can make gourmet meals at home.

Nana Wall Closed



Nana Wall Open





Aesthetics

- Truly maximized natural light through the placement of the wall of windows and the door to the porch, but also the transom window above the cabinets.
- The homeowner's wanted a light kitchen but didn't want it all white, so the island cabinets are painted a light gray that matches the veins in the countertop.
- Cambria quartz countertops look beautiful next to the blue Wedgewood Crackle Picket Fence beveled tile backsplash.
- Custom cabinets with inset doors and drawers go all the way to the ceiling where we wrapped the room's crown molding onto the cabinets for a seamless custom look.
- LED under cabinet lighting and recessed LED cans, along with period style island pendants give the family plenty of task lighting. Dimmers mean they can set the lighting to any mood.

Innovative Uses of Materials/Methods of Construction/Craftsmanship

- The home was on a small lot with a very narrow winding alley to bring materials into.
- We not only added 4' to the length of the kitchen, but also to the side by 2 feet. We expanded the existing kitchen in two directions while keeping the above two floors. There was a lot of temporary bracing walls to hold the structure up while gutting and rebuilding new walls.
- Because the homeowners were living in the home during the remodel, we needed to set up a temporary kitchen for them in the basement.
- The Range was very unique: it has multiple cooking methods including two electric ovens, gas cooktop, steam oven, as well as an induction cooktop.
- We installed a Nana Wall system that transforms a standard fixed wall or windows into a flexible opening that invites the outside in. The Nana Wall had a special locking system. We were able to not have a support post between the door and the windows so when the door and wall are fully open, there is an unobstructed view.
- The home and existing kitchen had hot water heat and large cast iron radiators. With our new configuration and maximizing wall space, we did not have any good area to reinstall the cast iron radiators. We used fan assisted small toe kick radiators that would work off a new zone from the existing boiler. They are hidden away but will still provide the needed heat.
- We wanted to blend in the kitchen to look as if it has always been in this configuration, so we milled new trim to match the two-piece base and casings. We were also able to save most of the oak hardwood flooring and weave in new wood, sand, and stain to fully match the rest of the house.



During Construction

Looking into the kitchen from
the dining room





Before



After

