

This is a summer home for our clients. They live in the city and found a quiet, country, lakeside setting to relax with family and friends. The home's interior has a mountain lodge feeling with ceiling beams and reclaimed wood.



Client Goals:

**A move-in ready dream home
but the clients wanted a bit
more:**

- **Swimming Pool**
- **Pool House**
- **Connected Outdoor Living Spaces**
- **New Front Entry**



NARI Mn CotY Awards 2023 | Landscape Design/Outdoor Living Over \$250,000

Country Lake Home | Along the St. Croix 1 of 16

Before. Disconnected spaces.

This is where we started.

Walkout level access to the game barn was either through the house or the stone steps in the middle of the yard.

Why is there a deck in the middle of the yard? Answer: It's sitting on top of a grain silo from an old farmstead. It was removed.

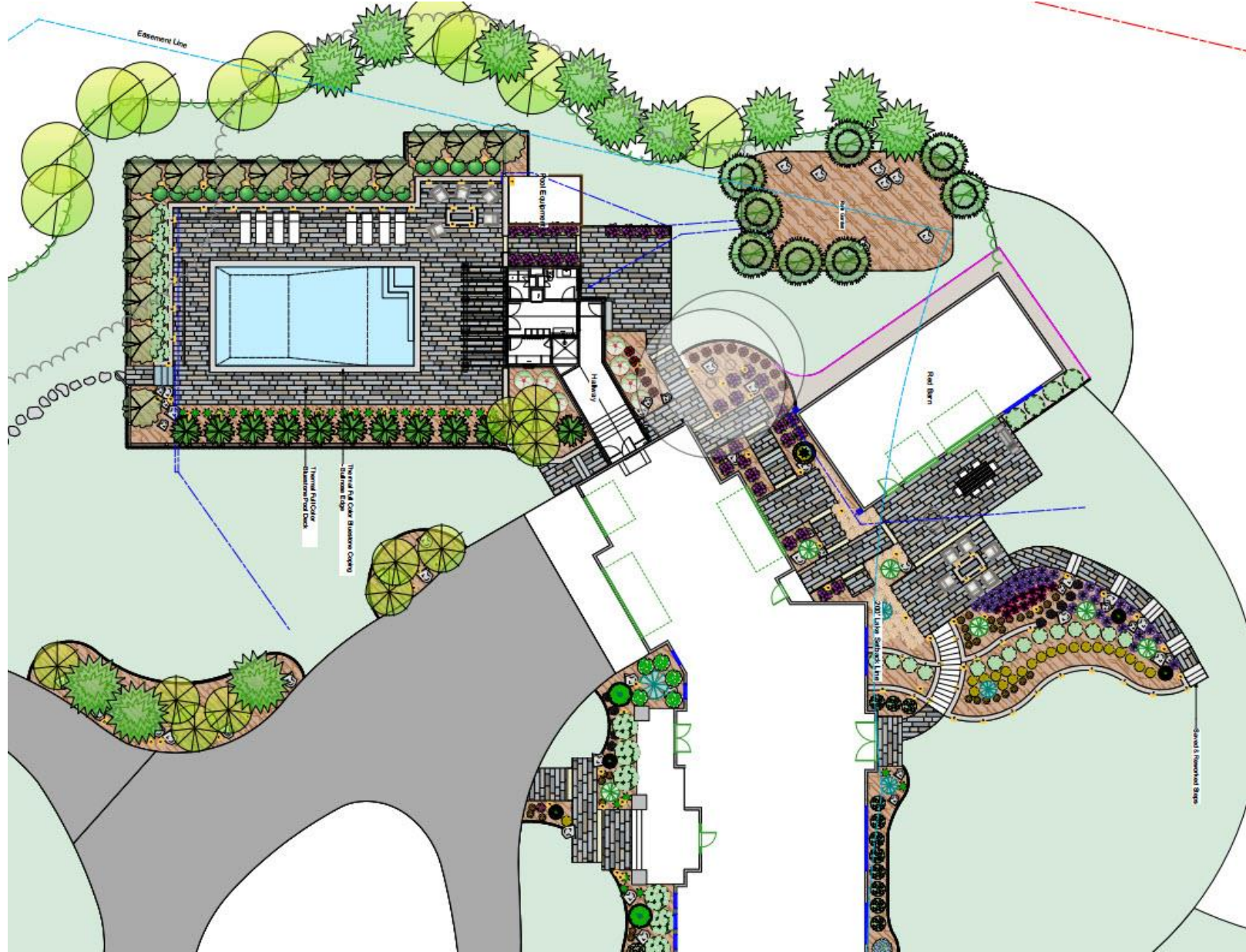
A firepit is on the far right.



NARI Mn CotY Awards 2023 | Landscape Design/Outdoor Living Over \$250,000

Country Lake Home | Along the St. Croix 2 of 16

Landscape Plan to connect the spaces.



NARI Mn CotY Awards 2023 | Landscape Design/Outdoor Living \$250,000

Craftmanship/Function. Added bluestone steps closer to the lower-level walkout door for easy access to the patio and game barn. Nightlighting on the masonry walls highlights the texture and color of the veneer stone.



NARI Mn CotY Awards 2023 | Landscape Design/Outdoor Living Over \$250,000

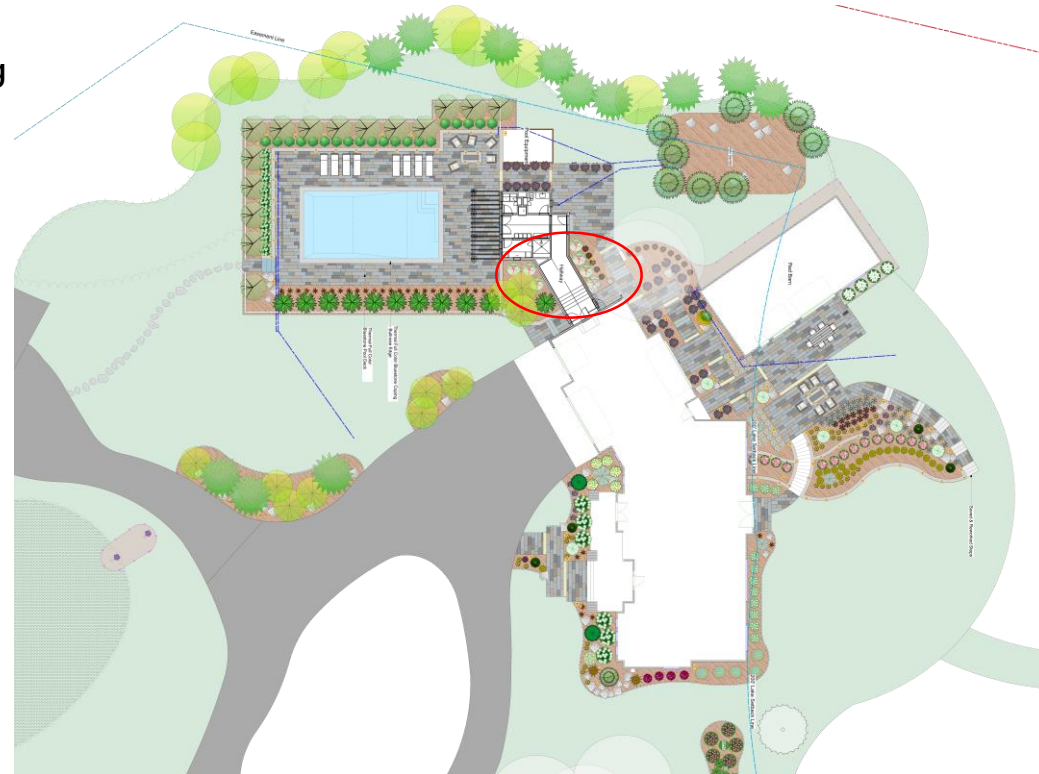
Country Lake Home | Along the St. Croix 4 of 16

The original concept located the pool in the back yard, just outside the Red Barn. The lake setback (blue line at the back of the house and crosses the Red Barn) made that impossible. The next concept put the pool on the north side of the driveway.

The aerial shows outdoor living spaces scattered across the landscape. With the pool on the north side of the driveway, the new challenge was the pool house. There is a maximum of two outbuildings - the Red Barn and the storage building - allowed. Solution: connect the pool house to the home with an enclosed hallway.

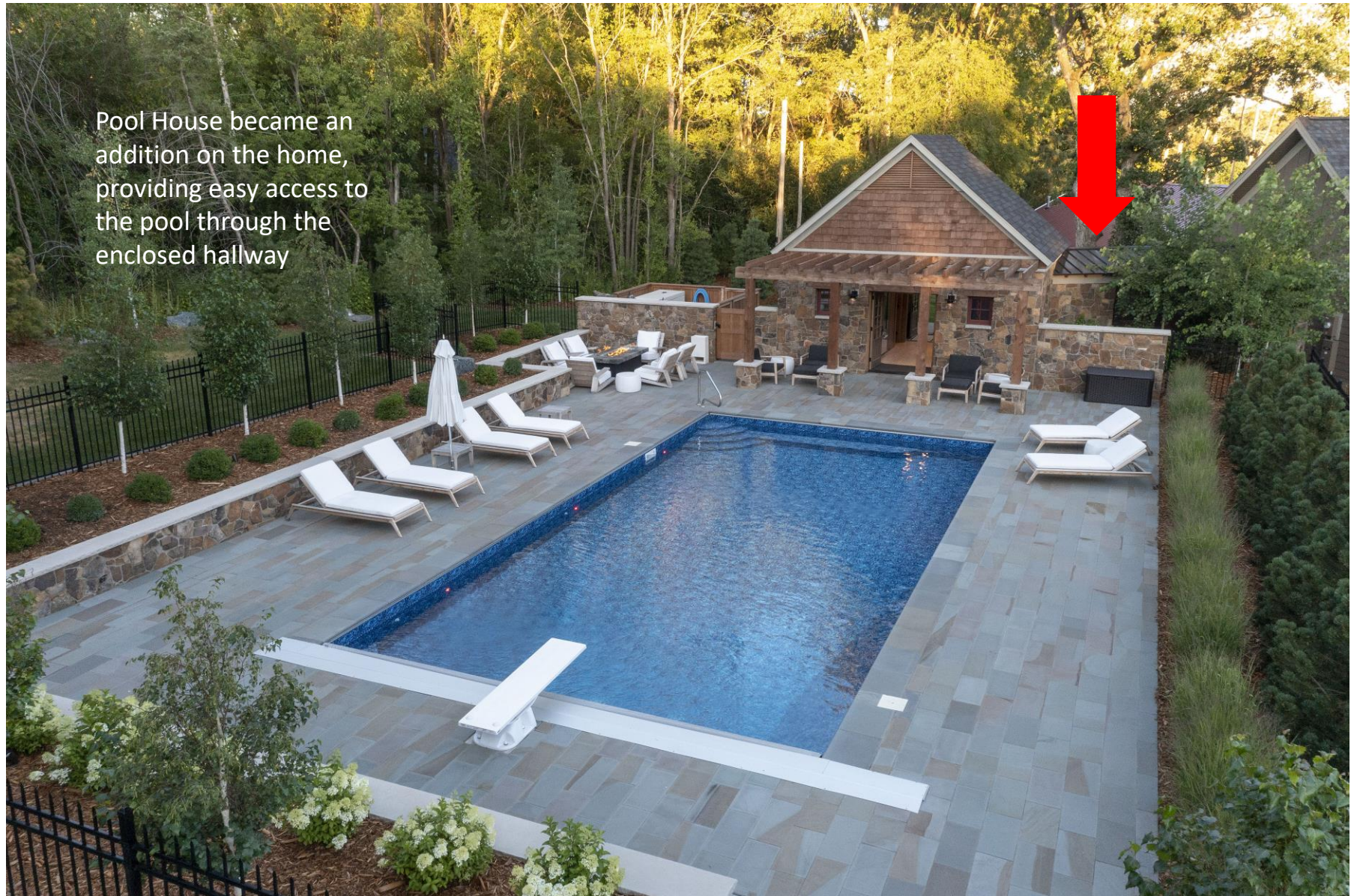


Before



The enclosed hallway between the home and the pool house circled.

The pool house has a bathroom, two refrigerators, an indoor shower, an outdoor shower, washer/dryer, and storage for poolside furniture, pillows, towels, and toys.



Pool House became an addition on the home, providing easy access to the pool through the enclosed hallway

NARI Mn Coty Awards 2023 | Landscape Design/Outdoor Living Over \$250,000

Country Lake Home | Along the St. Croix 6 of 16



The Red Barn is a game house with big screen TVs, bar, luxury seating, game tables, jukebox, and darts.

Reused the stone steps on the right and added bluestone landings for an easier climb.

Expanded patio area outside the game house includes a fire table.

Massing plant material for maximum effect of color and texture.

NARI Mn CotY Awards 2023 | Landscape Design/Outdoor Living Over \$250,000

Country Lake Home | Along the St. Croix 7 of 16

Detail shot. New set of steps from the lower level of the home illuminated by downlights under the retaining wall caps.



NARI Mn CotY Awards 2023 | Landscape Design/Outdoor Living Over \$250,000

Country Lake Home | Along the St. Croix 8 of 16

Connecting the pool area and the back yard was accomplished with a breezeway.



Before

Functionality

Trees had to be cleared. We kept the larger ones to maintain a portion of the wooded area. Bluestone walkways illuminated by path lights connect the back yard patios and game house with the pool area. The garage door to the left opens to the driveway.



NARI Mn CotY Awards 2023 | Landscape Design/Outdoor Living Over \$250,000

Aesthetic. Fire and water. Two elements we are drawn to when we need to relax.



Bluestone was used throughout the project – pool deck, patios, and walkways and highlights the colors on the home.

Fire Tables, surrounded by comfy chairs, draw family and friends to spend some time in conversation. The table above is on the pool deck and the one to the right is outside the Red Barn.

Behind the wall above, you'll find the pool equipment. There's a gate on the far side for easy access when maintenance is necessary.



NARI Mn CotY Awards 2023 | Landscape Design/Outdoor Living Over \$250,000

Functionality. The outdoor shower drains to the rain garden on the NE corner of the property. The pool deck drains also head in the direction.



- The shower is tucked into a private corner. That's shampoo and conditioner on the windowsill.
- The hallway connecting the pool to the home is visible.
- The stone veneer on the pool house, connecting hallway, and walls match the front of the home.

Aesthetics. The landscape hugs the home and the outdoor living spaces are connected. Even if you are inside the house, you can see everything going on. The small door leads to the main floor of the home.



NARI Mn Coty Awards 2023 | Landscape Design/Outdoor Living Over \$250,000

Lake Country Home | Along the St. Croix 12 of 16

Functionality. The evergreens and grasses along the pool deck on the right separate the pool area from the driveway, provide privacy, and blocks the view of cars during a party.



NARI Mn CotY Awards 2023 | Landscape Design/Outdoor Living Over \$250,000

Country Lake Home | Along the St. Croix 13 of 16

Craftsmanship



Concrete pad surrounds the pool in preparation for the Full Color Thermal Bluestone used on this project.

The same bluestone is used on the patios, walkways, and front entry.

NARI Mn CotY Awards 2023 | Landscape Design/Outdoor Living Over \$250,000

Country Lake Home | Along the St. Croix 14 of 16

Before and After - Front entry update. Homeowner was adamant – “update the front and NO red mulch.”



Before. Front entry had random boulders and plants with a concrete sidewalk. None of it matched the style of the home. Oversized beds did nothing to enhance the front entry.

After. Bluestone walkway with seat boulders cut into the corners. Smaller beds and fewer plants across the front. Mulch is a nod to the cedar shakes above the front door. Nightlighting “extends” the front entry to the driveway. Perfect spot for the Minnesota long goodbye.



NARI Mn CotY Awards 2023 | Landscape Design/Outdoor Living Over \$250,000



NARI CotY Awards 2023 | Landscape Design/Outdoor Living Over \$250,000