

NARI MINNESOTA – 2022 COTY AWARDS

PROJECT: PLAYHOUSE PROJECT

CATEGORY: RESIDENTIAL INTERIOR ELEMENT UNDER \$30,000

ABOUT

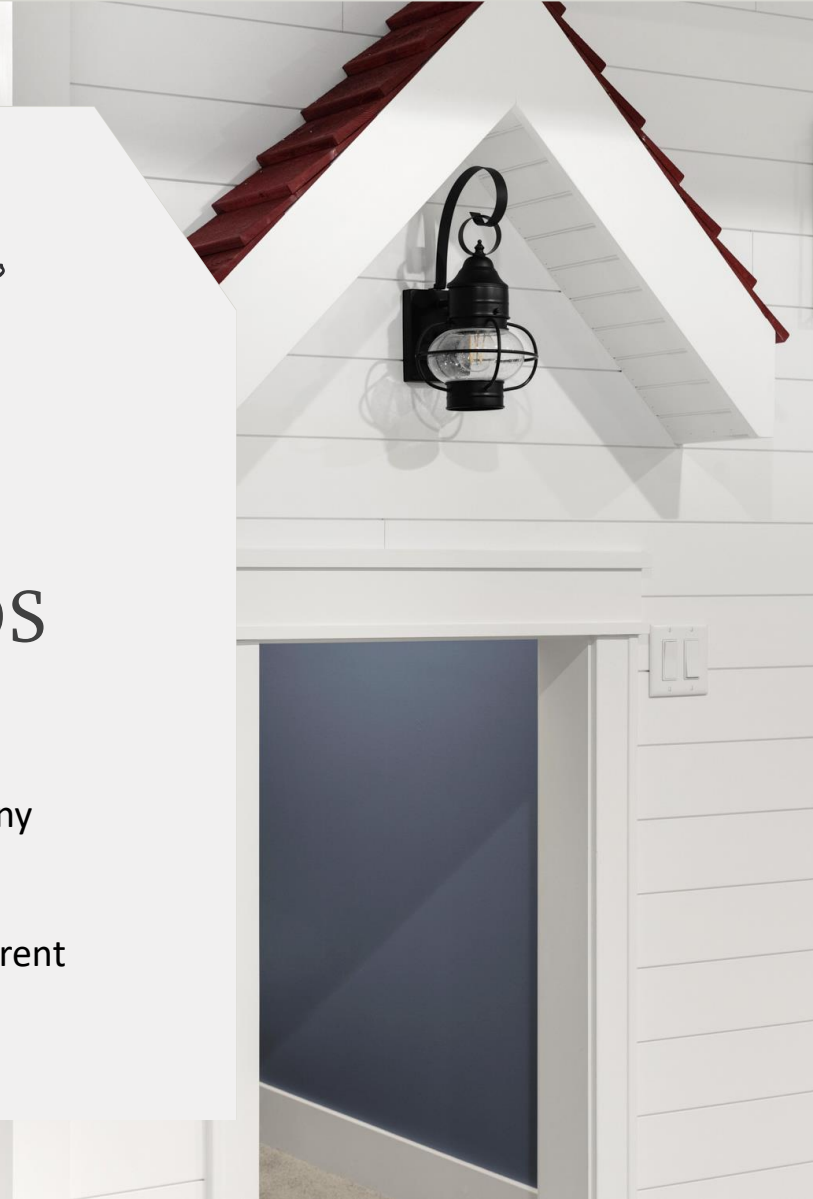
Our clients wanted to finish their basement and utilize every nook and cranny. The impractical storage under the staircase felt like such a waste. They wanted to include a space for the kiddos without having a typical playroom filled with toys. The challenge: Create a kid's space that could "hide" the chaos that kids create during play. The result was a dedicated playhouse tucked under the stairs of their finished basement. The space was designed to look like a little home within a home. It had its' own front light on separate switch, additional outlets and USB chargers for their electronics and a cute open window used to chat with those passing by. The cozy nook was a fun and whimsical solution to tucking away all the toys, books, art supplies, etc., while encouraging creative and organized play. The space encouraged their little ones to get lost in their imagination in a space that was all their own.





CLIENT NEEDS

- ☐ Finish off basement
- ☐ Utilize every nook and cranny
- ☐ Designated space for kids
- ☐ Looking for something different than a “typical” playroom



PROJECT CHALLENGES



FUNCTION VS. AESTHETIC

We were faced with the challenge to create a designated space for the kids to play and store their toys, without taking away from the client's aesthetic and usable functionality of a finished basement.



UNIQUE

Our clients wanted this space to be unique and not just a traditional toy room that was tucked into the corner of their new basement.



USE OF SPACE

We wanted to be able to take advantage of all the space within this lower level so that no space or corner was unused.

FUNCTIONALITY

- ☐ Utilize the traditionally unused or wasted space beneath the stairs
- ☐ Space to organize and store kids' toys, books, art supplies, etc.
- ☐ Designated space separate from the entertainment/adult space of the finished basement
- ☐ A place where the kids could still be part of the lower level while keeping the finished areas more adult focused.



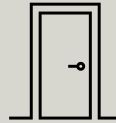
AESTHETICS



A tiny home within a home



Nickel gap shiplap to look like siding that does double-duty as an accent wall



Front door with a canopy and front porch light on separate switch



Additional outlets and USB chargers for their electronics



A cute open window used to chat with those passing by

CRAFTSMANSHIP / INNOVATIVE METHODS & USES

Custom carpentry

Nickel gap shiplap

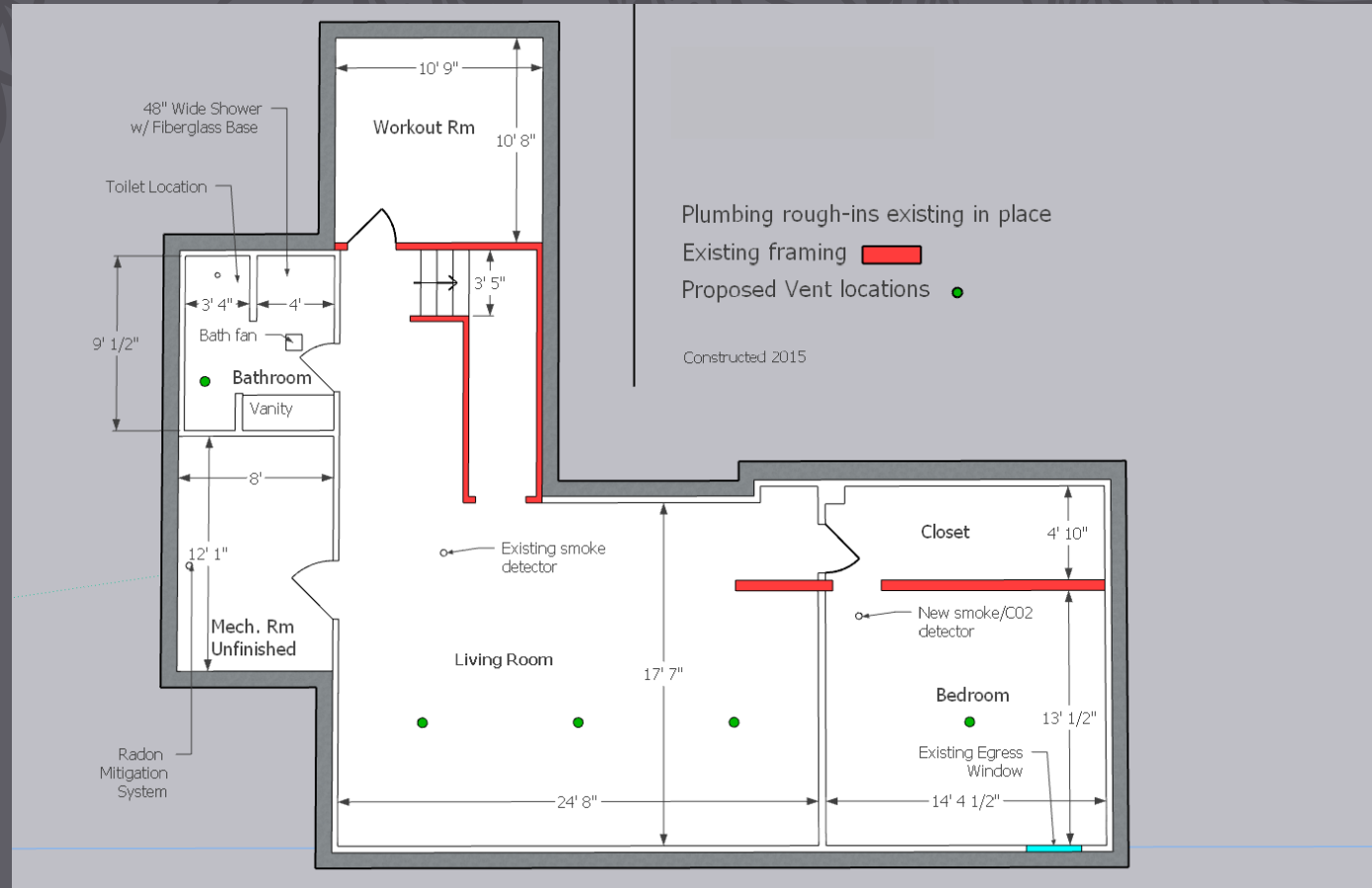
Custom cedar window box for flowers

Designated light switches, outlets and USB chargers

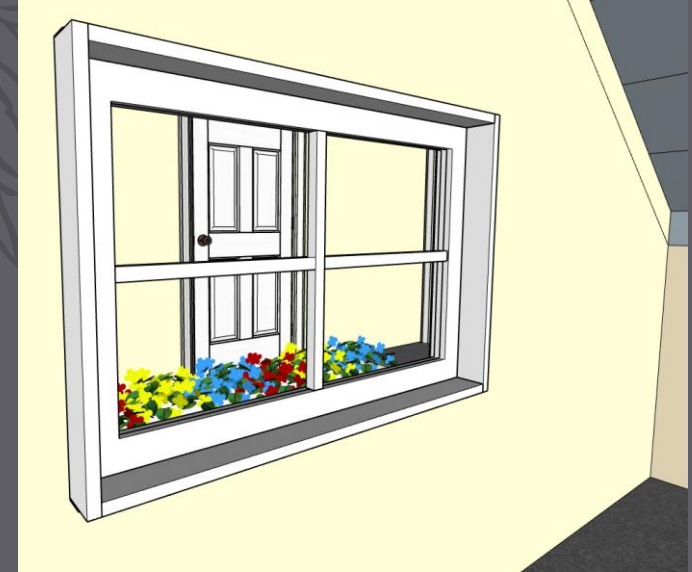
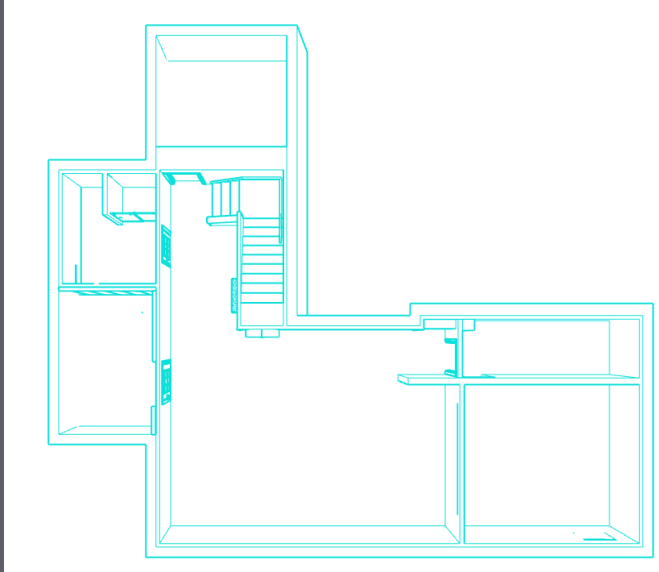
Shingled roof canopy with soffit and fascia just like a real home



BEFORE FLOOR PLAN



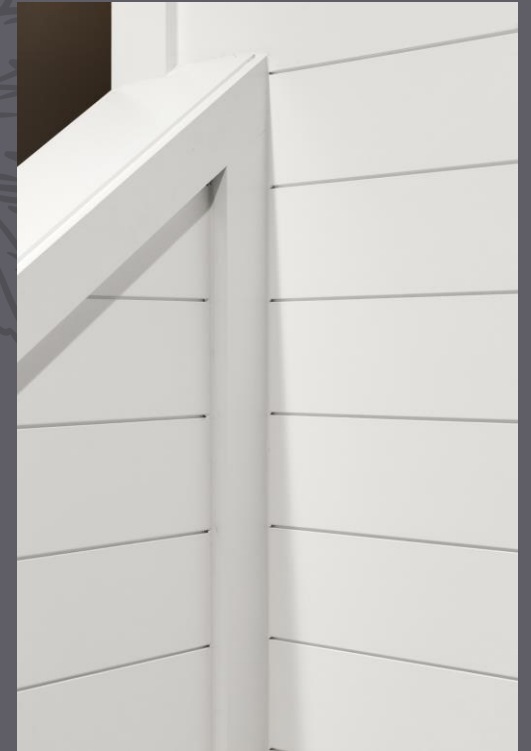
AFTER FLOOR PLAN & 3D RENDERINGS



BEFORE PHOTOS



AFTER PHOTOS



BEFORE & AFTER SIDE BY SIDE

