

2022 COTY SUBMISSION

NARI MINNESOTA

PROJECT: TRANSITIONAL FINISHED BASEMENT
CATEGORY: RESIDENTIAL BASEMENT UNDER 100K



ABOUT THE PROJECT

This was the perfect clean slate basement that needed finishing. The client worked with a designer to incorporate a home office, 3/4 bathroom and dry bar. The layout includes a spacious living room area and a guest bedroom that doubles as a workout room. The client wanted a design that matched her newly built home but she also wanted a pop of color that carried through the basement for a high designed look.

CLIENT DESIRES:

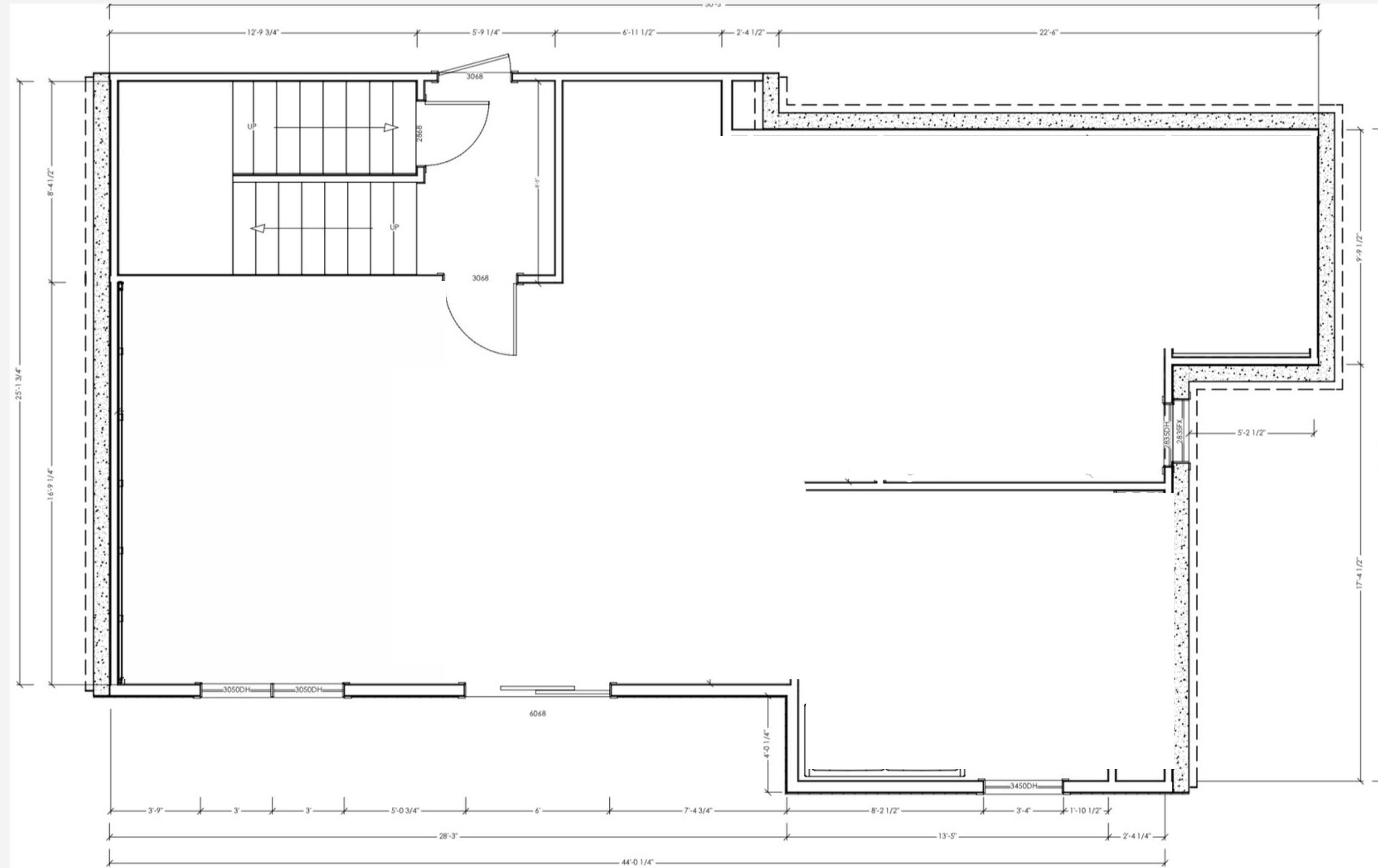
OFFICE SPACE
FUN ACCENT COLOR
3/4 BATHROOM
ROOM FOR GUESTS AND WORKING OUT
DRYBAR
TIE INTO REST OF THE HOME



BEFORE FLOOR PLAN

SCOPE OF WORK

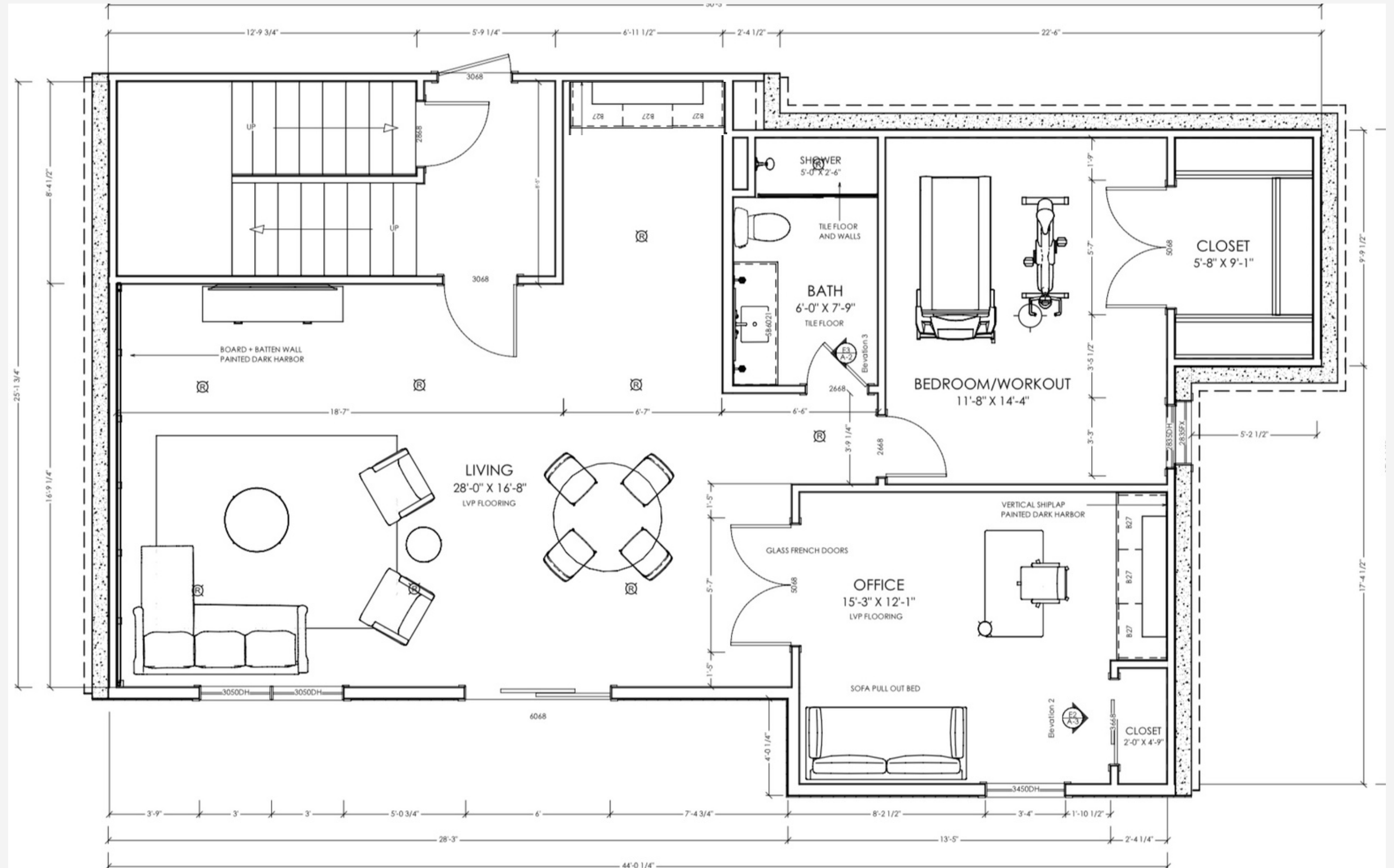
- Frame and sheetrock bathroom, bedroom and office for new layout
- Create dry bar area
- LVP flooring throughout
- Install french doors to office
- Board and batten and shiplap feature walls
- Millwork, paint and finishing installations



AFTER FLOOR PLAN

MEETING CLIENT NEEDS

- spacious entertaining area with a dry bar
- Bathroom with tiled shower
- Bedroom that doubles as a workout area
- Office space with built-in cabinetry
- French doors to office for an open feel
- Special attention to millwork and paint colors so the basement feels cohesive to the rest of the home



BEFORE



RENDERINGS WITH SELECTIONS



AFTER





CRAFTSMANSHIP DETAILS

- Crafted board and batten wall
- Vertical stacked tile with large niche customized to clients desire
- Quartz countertops in the bathroom and dry bar
- French doors that make the office feel open and light
- Customized prefabricated cabinetry in the bathroom and bar area to look and feel built in
- Vertical shiplap accent walls for a fun feature

AFTER





FUNCTIONALITY

- The French doors allow for a bright and open feel to the office
- Built in cabinetry along with open shelving creates storage with style
- The large workout room can be transformed to a guest suite which offers flexibility to this basement
- The drybar is perfect for an afternoon refreshment or can serve as a bar for entertaining



AESTHETICS

Our client wanted this space to be fun and functional. She wanted to incorporate a rich accent color. This fun “Dark Harbor” color is so unique and chameleon like. She wanted the space to feel fresh, so we opted for a high quality cortec LVP instead of carpeting. We brought in texture with board and batten and shiplap feature walls as well as a hand painted tile look in the bathroom. The play on white cabinetry with white oak flooring and shelving along with gold fixtures works well for this transitional basement.



OBSTACLES

- To maintain cleanliness of the home, materials were brought around through the sliding door in the back of the home and in March the hill was ice and as things warmed up it became very wet and slippery
- The client was on a strict budget so we worked hard to incorporate budget friendly options that did not compromise the aesthetic of the design
- There were some challenges with having to re-frame some areas that were not built level

