

# NARI MINNESOTA- COTY AWARDS

PROJECT: Commercial Office

CATEGORY: #30

Commercial Interior/Commercial Exterior  
Commercial Speciality

Design and build second floor office space that could be split into multiple use areas. We wanted to create a common space to house storage area and restrooms, have a conference room area with executive offices to greet clients and have working meetings. A third space for employee use that has individual offices and a common multi space for drop in use.

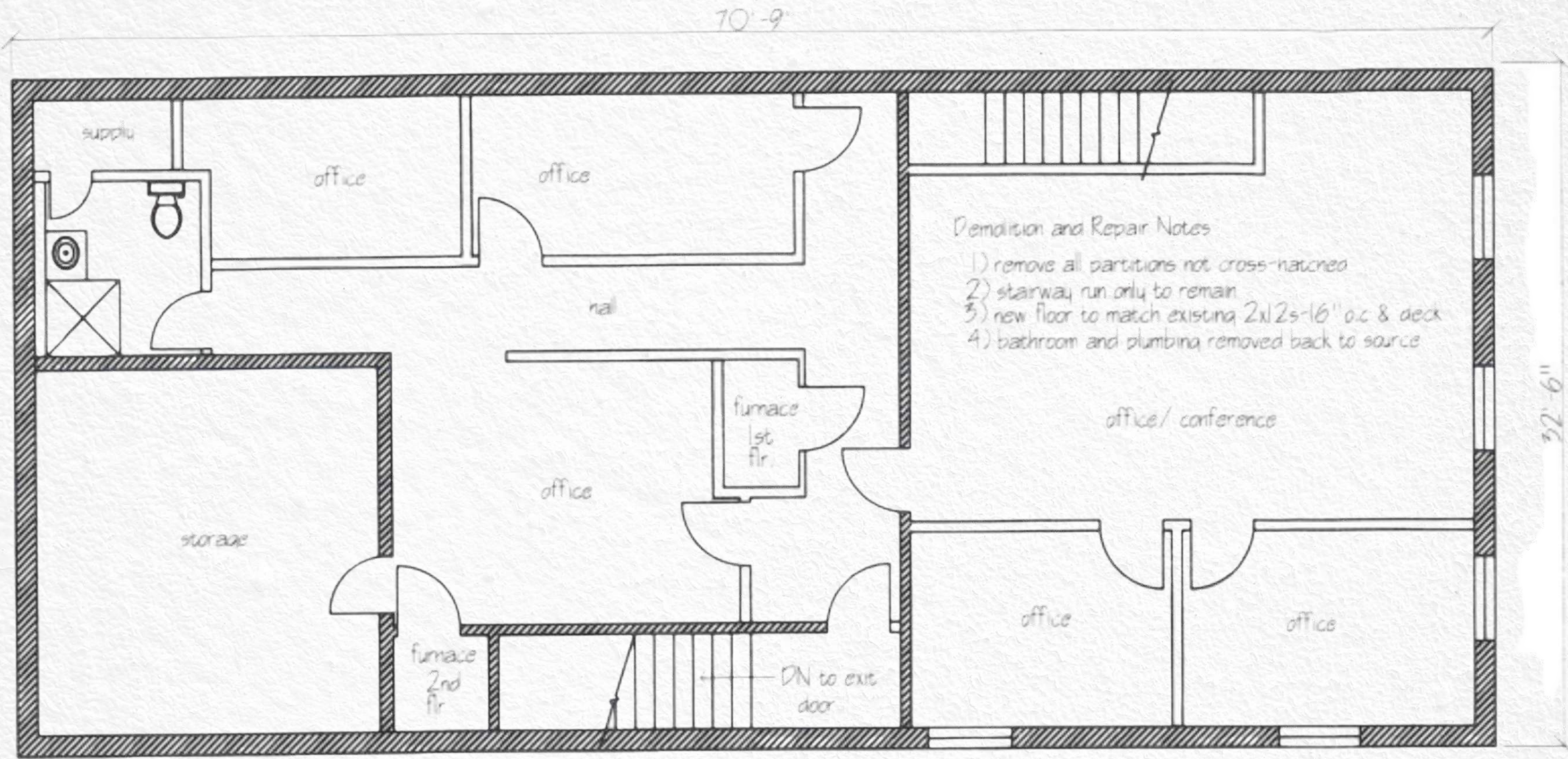
## CLIENT NEEDS:

- Workable office space that showcases our high end custom design abilities
- Function meets beauty & budget
- Central downtown location to promote brand visibility
- Multi purpose space that can double as a design center, a place to meet clients and a company conference room.



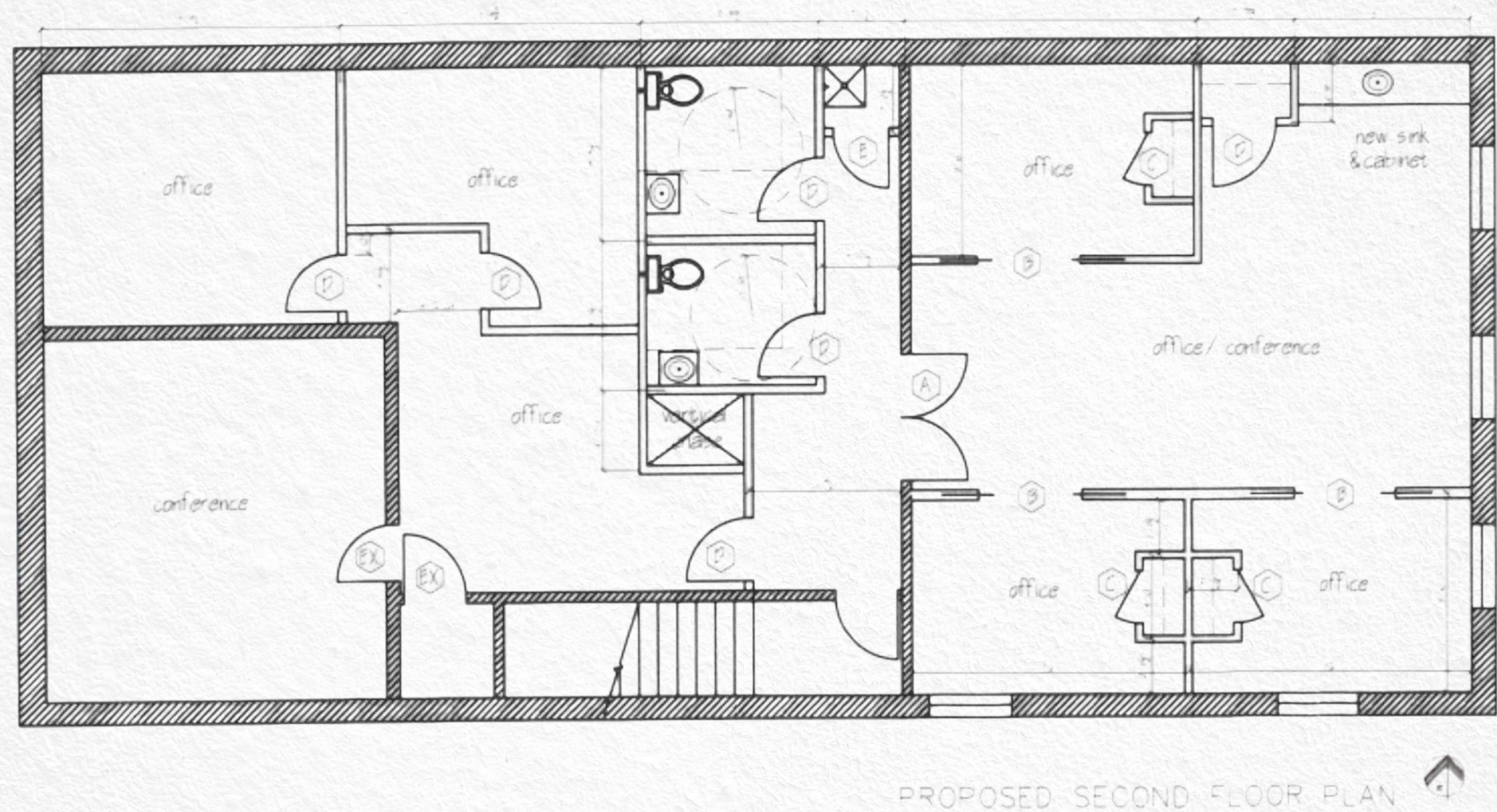


BEFORE FLOOR PLAN





AFTER FLOOR PLAN





# AFTER EXTERIOR PLAN





BEFORE AND AFTER



STILLWATER OFFICE- COTY AWARDS- COMMERCIAL



BEFORE AND AFTER



STILLWATER OFFICE- COTY AWARDS- COMMERCIAL



# BEFORE AND AFTER



STILLWATER OFFICE- COTY AWARDS- COMMERCIAL



BEFORE AND AFTER



STILLWATER OFFICE- COTY AWARDS- COMMERCIAL



BEFORE AND AFTER



STILLWATER OFFICE- COTY AWARDS- COMMERCIAL



BEFORE AND AFTER



STILLWATER OFFICE- COTY AWARDS- COMMERCIAL



BEFORE AND AFTER



STILLWATER OFFICE- COTY AWARDS- COMMERCIAL



BEFORE AND AFTER



STILLWATER OFFICE- COTY AWARDS- COMMERCIAL



# BEFORE AND AFTER



STILLWATER OFFICE- COTY AWARDS- COMMERCIAL



# BEFORE AND AFTER



STILLWATER OFFICE- COTY AWARDS- COMMERCIAL



# FUNCTIONALITY

- Split office space for internal meeting and work separate from clients selection and conference area
- Multiple storage areas to house selection materials and miscellaneous construction needs
- Two separate kitchenettes, one to showcase high end appliances and the other space to showcase alternate finishes
- Two centrally located restrooms
- Easy access to local dining and entertainment





# AESTHETICS

- Arched entry and double pocket doors into main office
- Showroom light fixtures in each office
- Fun wallpaper detail in architect office and restrooms
- Diffing bold and contrasting colors in each office
- Industrial LVP flooring for original hardwood floor look
- Exposed industrial ceiling
- Antiqued mirror backsplash at main kitchenette
- Black longboard siding and planter box detail
- Custom made back lit exterior signage





# CRAFTSMANSHIP/ INNOVATIVE METHODS & USES

- Custom enameled wood details in each office
- Custom built white oak desks in each office
- Oversized white oak custom conference table
- Perimeter custom desk in flex office
- Extra wide flexible trim molding at all arch locations
- Unique selection wall to showcase design materials
- Built in appliances including fully plumbed coffee maker, ice machine and combo oven
- Custom floating bath vanities with horizontal slat details supported by custom hidden steel brackets.

## PROJECT CHALLENGES

- Creating separate facades for two different businesses
- Working with preservation committee to protect historic Stillwater downtown business district
- Keeping construction area clean and confined to minimize disruption with neighboring businesses
- Product delays and social distancing due to Covid pandemic
- Masking industrial hood vent from main floor restaurant, to meet code requirements with an esthetically pleasing design
- Maintaining proper fire separation between main floor restaurant and upper floor offices spaces

