

NARI MINNESOTA- COTY AWARDS

PROJECT: Basement

CATEGORY: #36 Basement

The homeowners purchased their home for the formal feeling for the main floor. Although they love the formal living space, they wanted an area more conducive to entertaining friends and family. Also a space for the adults and kids to enjoy game nights together. Starting with a fully unfinished lower level provided a clean slate to customize the homeowners wants and needs by providing an inviting yet functional space that will complement the future pool and outdoor living space.

CLIENT NEEDS:

- Home office
- Bathroom for future pool
- Theater lounge area
- Beverage & meal prep for entertaining space
- Dining area
- Game night area

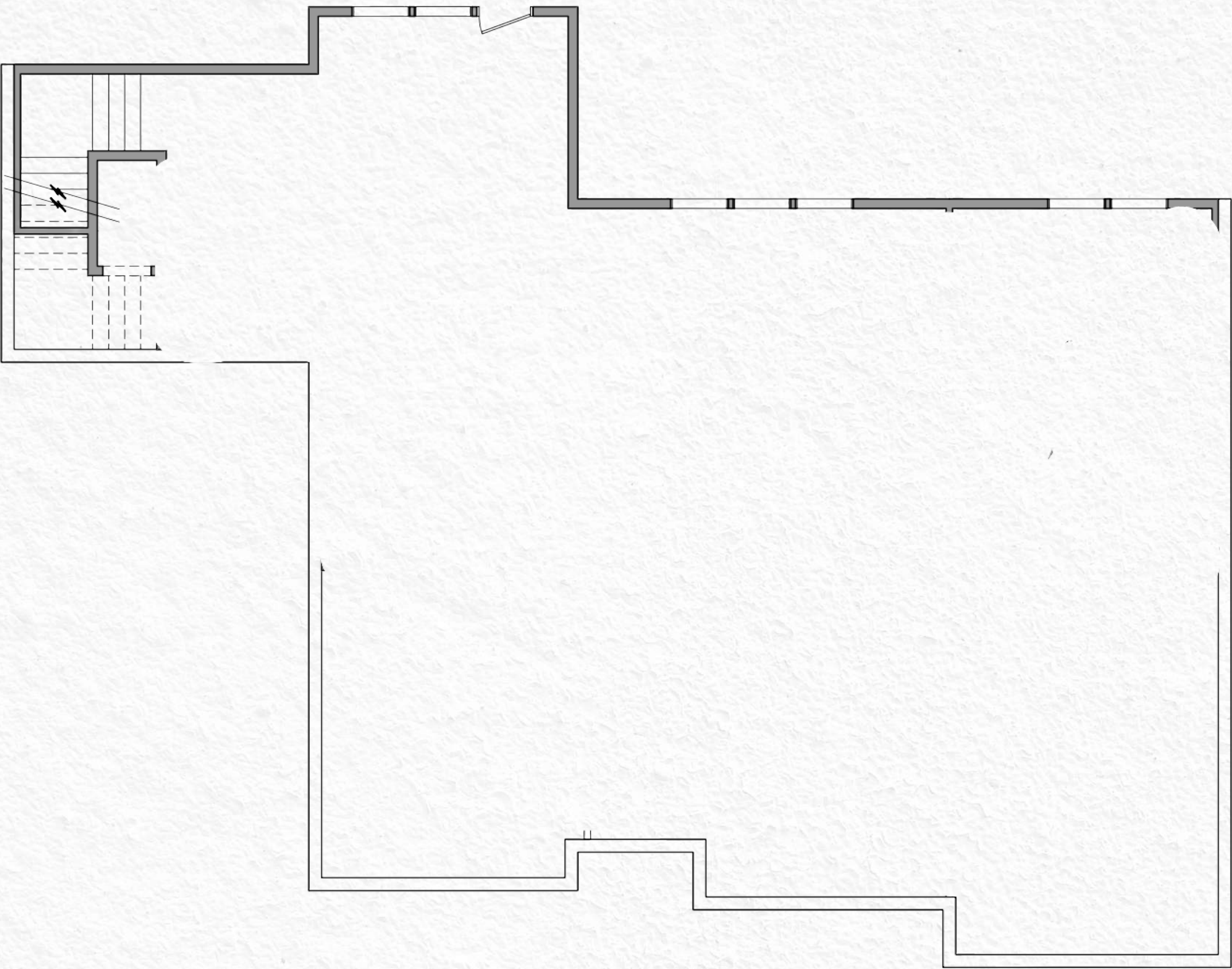


BEFORE
PHOTOS



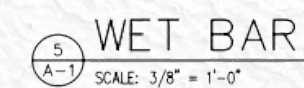
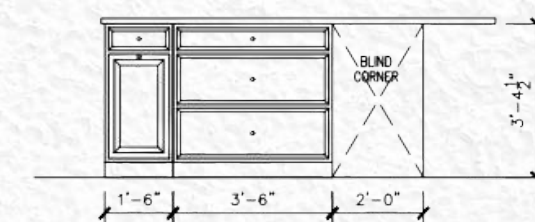
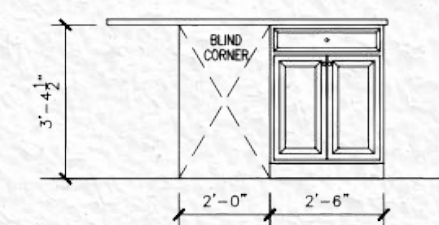
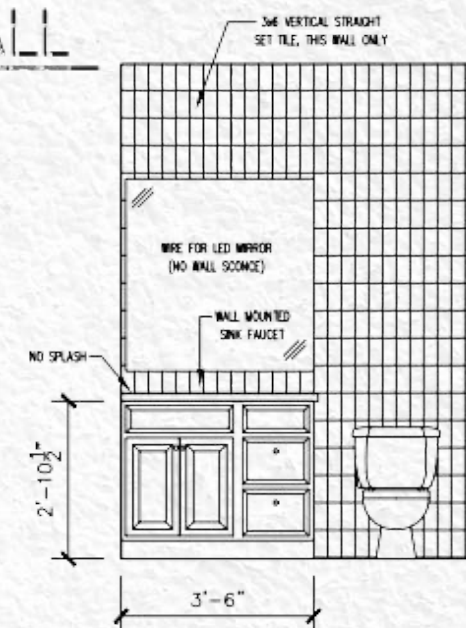
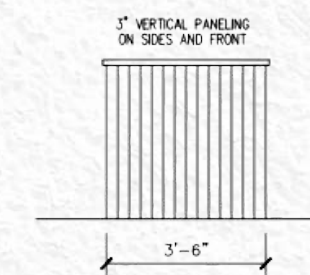
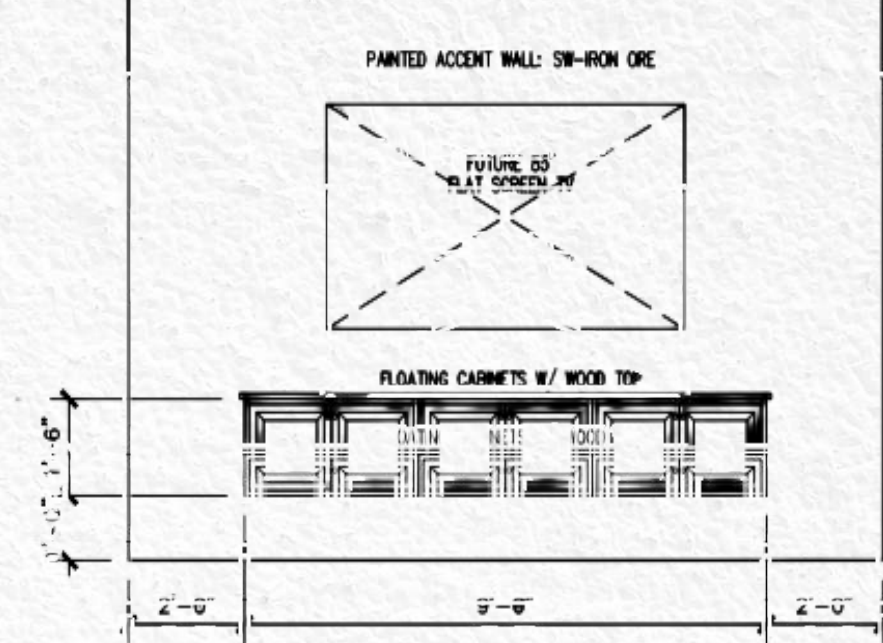
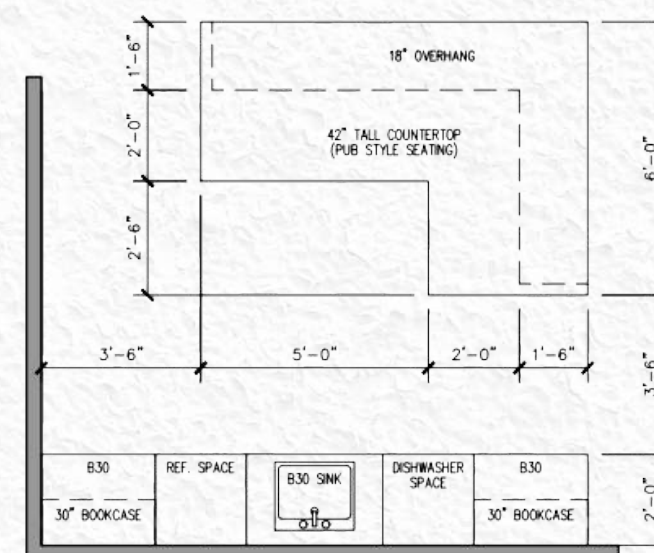
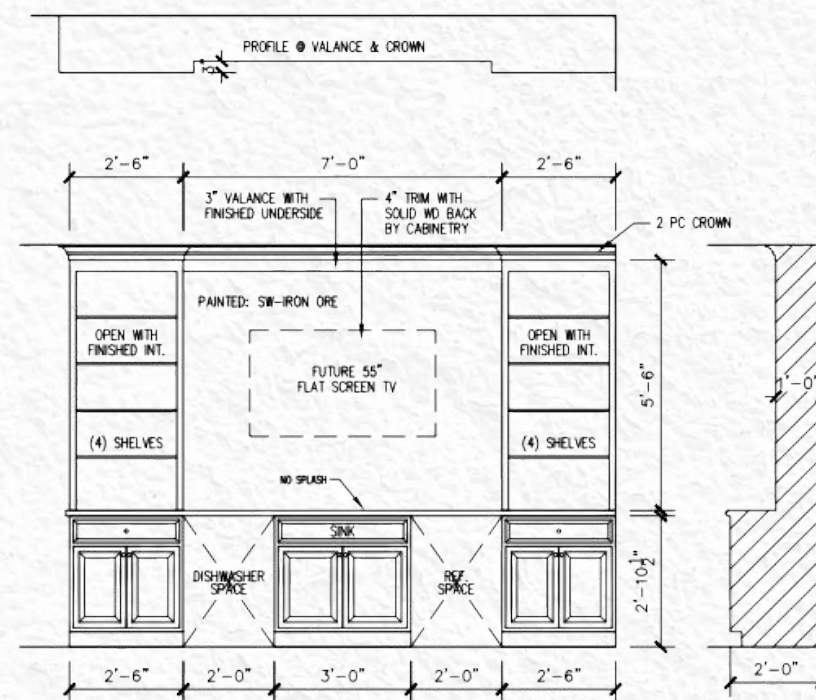
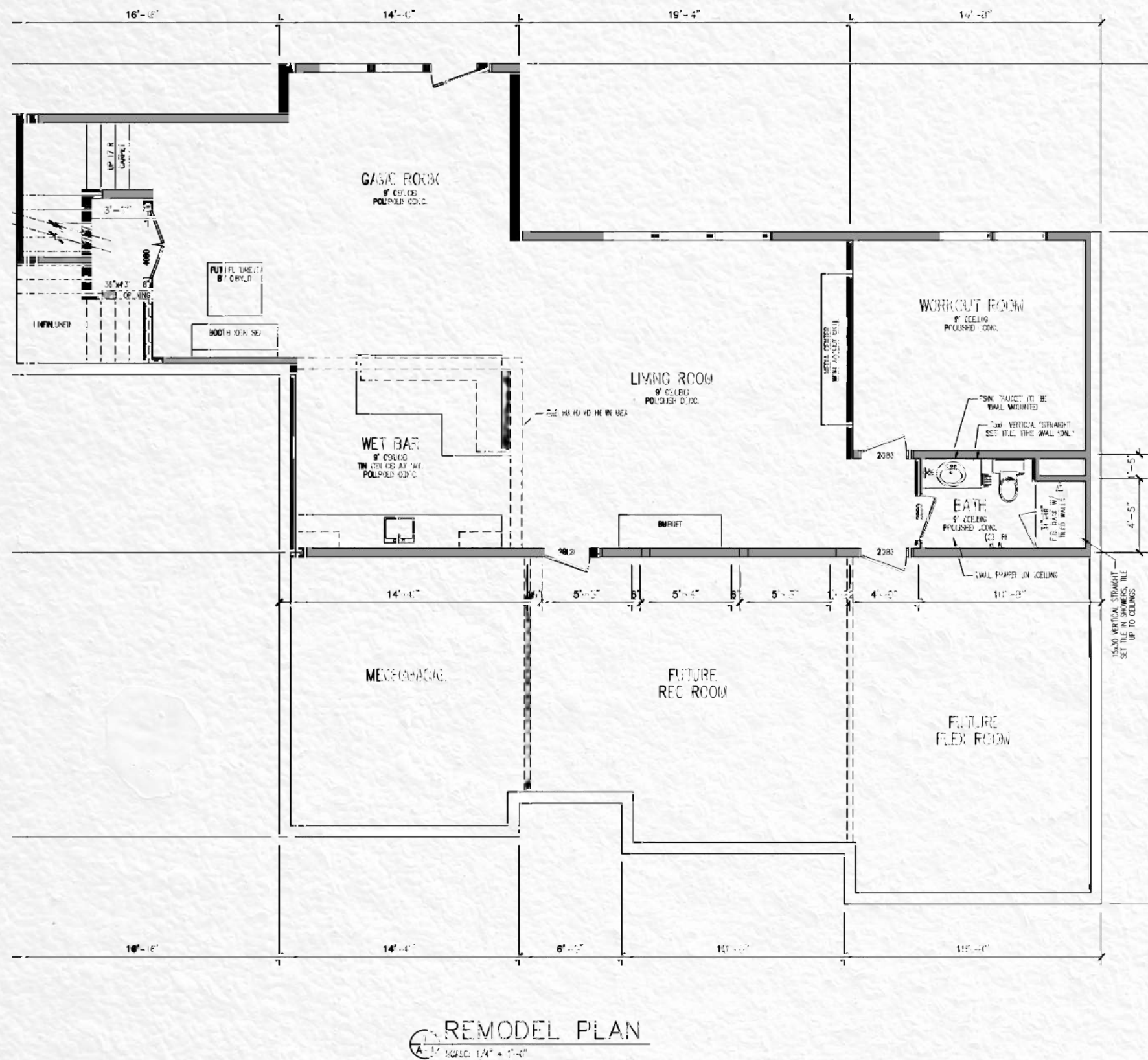
HUDSON BASEMENT- COTY AWARDS- RESIDENTIAL BASEMENT

BEFORE FLOOR PLAN

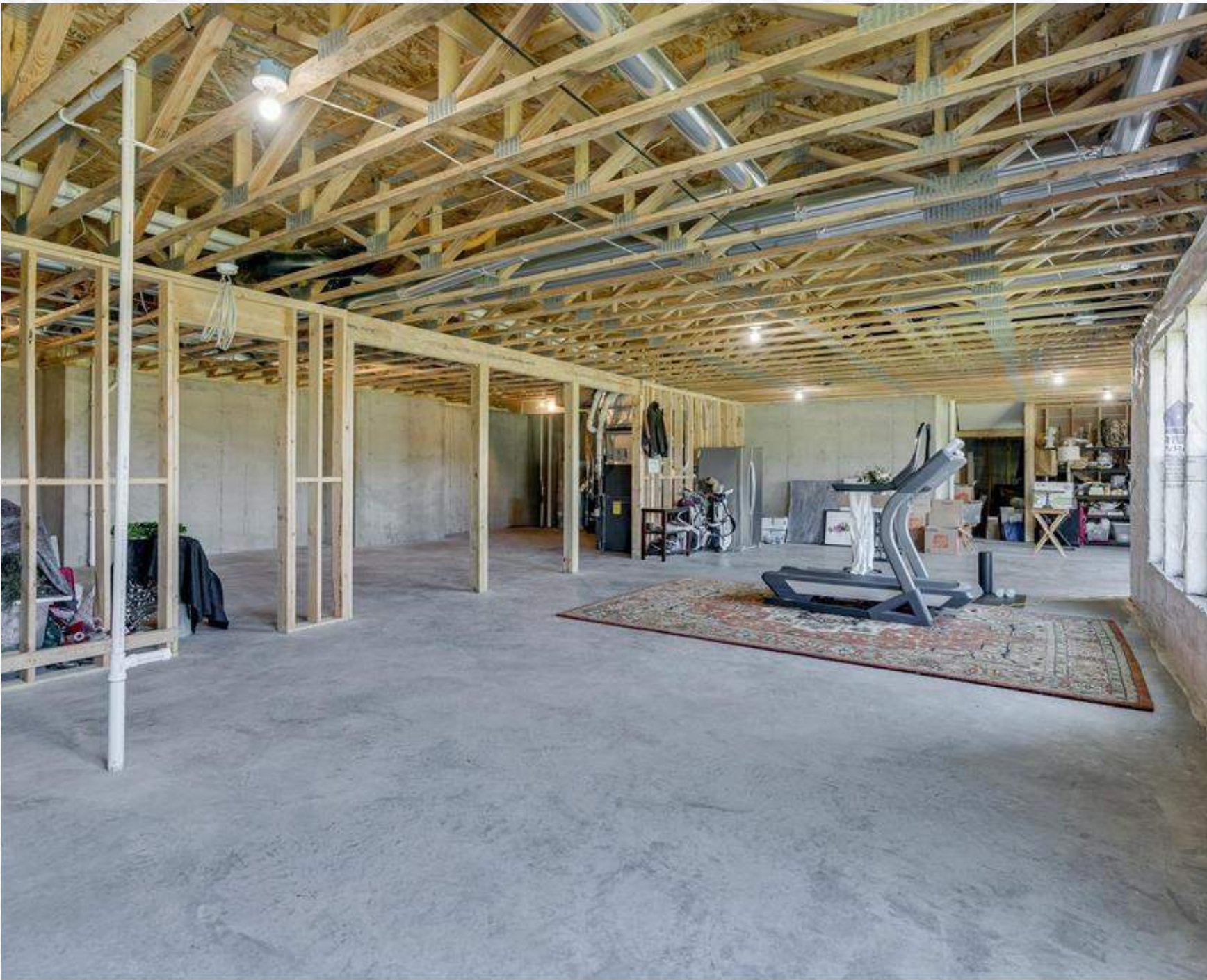


2
A-1 LOWER LEVEL
SCALE: 1/4" = 1'-0"

AFTER FLOOR PLAN



BEFORE AND AFTER



HUDSON BASEMENT- COTY AWARDS- RESIDENTIAL BASEMENT

BEFORE AND AFTER



HUDSON BASEMENT- COTY AWARDS- RESIDENTIAL BASEMENT

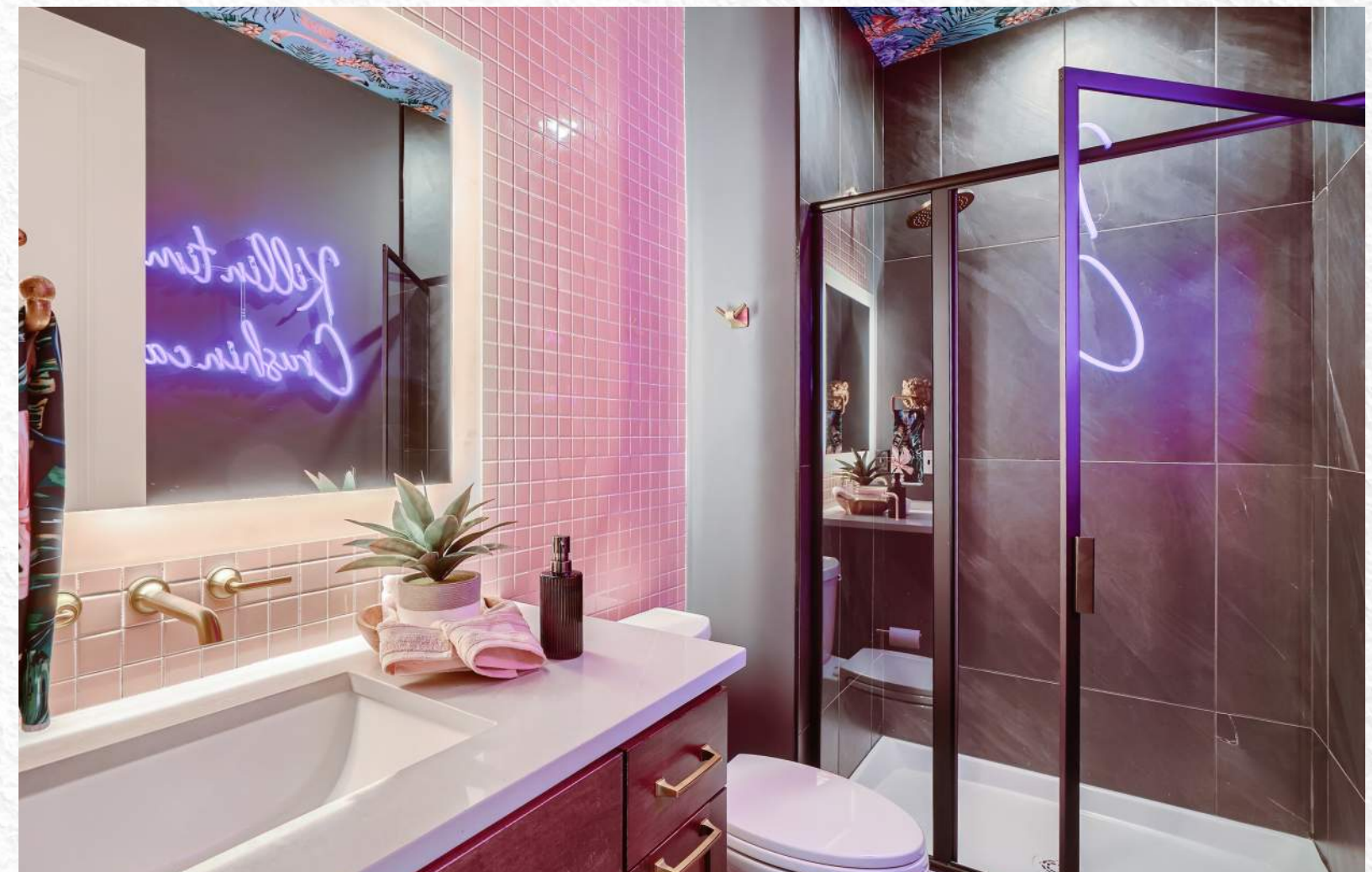
FUNCTIONALITY

- Centrally located bar and dining booth with easy access to outdoor living area
- Polished concrete floors to withstand pool traffic
- Home office/bedroom/flex room located close to bathroom
- Open concept feeling yet separate areas for game night, movies and bar entertainment
- Custom storage solution for both frequent use and seasonal storage centrally located near lounge area
- Abundant storage space in theater area for AV equipment and entertainment needs



ASTHETICS

- Unexpected bold tile accent wall with lighted mirror
- Flamingo wallpaper on ceiling
- Pfister Brushed Gold wall mount faucet to match customized accessories
- Bathroom gives an unapologetic Miami vibe
- Sherwin Williams Porpoise ceiling paint for contrast to Worldly Gray wall color and white enameled trim
- Polished concrete floor for a Speakeasy feeling



CRAFTSMANSHIP/ INNOVATIVE METHODS & USES

- 100 + year old reclaimed timber with mortis and tendon joints to outline the bar area
- Individual tin ceiling panels with custom metal crown to create an inviting accent to bar area
- Custom wood wall panel in bar and theater area to provide texture and warmth
- Fully custom cabinet design to maximize storage and functionality in bar
- Stainless steel dishwasher and Uline beverage center
- Full two coat site finished enamel woodwork
- Applied RC sound channel to ceiling before sheetrock to minimize sound transfer between floors
- Custom surround sound in theater
- Fully tiled shower using Wede sub-liner waterproof drainage system



PROJECT CHALLENGES

- To create a fully custom bar and entertaining area that was warm and inviting
- Finding alternative finishes to accommodate budget without sacrificing essential design elements
- The job had a fairly long and narrow driveway that didn't allow for a garbage container. Each trade was required to remove and dispose debris off site daily
- No access for portable toilet. We partnered with neighboring contractor to combine usage of their unit
- Deliveries needed to be carried from the street to rear walkout level because of limited access to the home
- Winter conditions proved challenging because slope of backyard. Daily upkeep of snow and ice removal was essential

CONSTRUCTION PHOTOS



HUDSON BASEMENT- COTY AWARDS- RESIDENTIAL BASEMENT

CONSTRUCTION PHOTOS



HUDSON BASEMENT- COTY AWARDS- RESIDENTIAL BASEMENT