

Farmhouse Sophisticated

Residential Interior \$250,000 - \$500,000

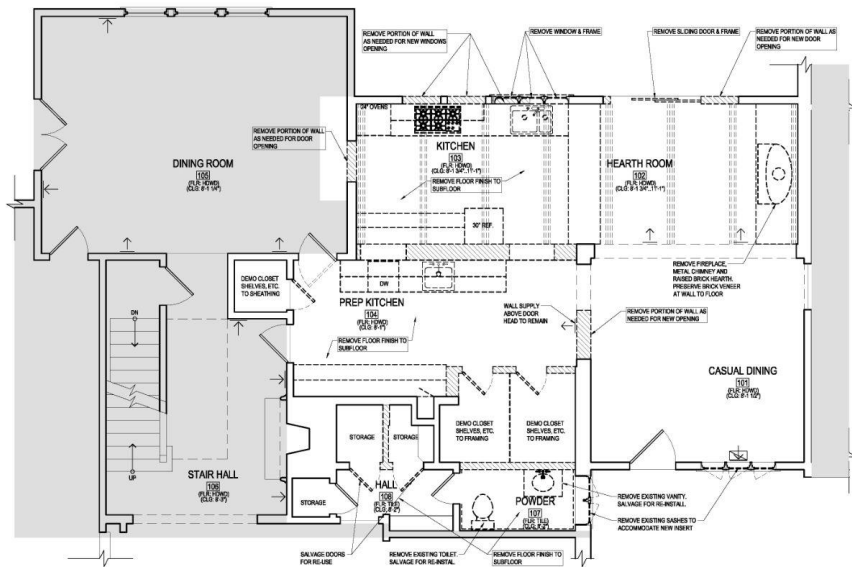
Farmhouse Sophisticated

Residential Interior \$250,000 - \$500,000

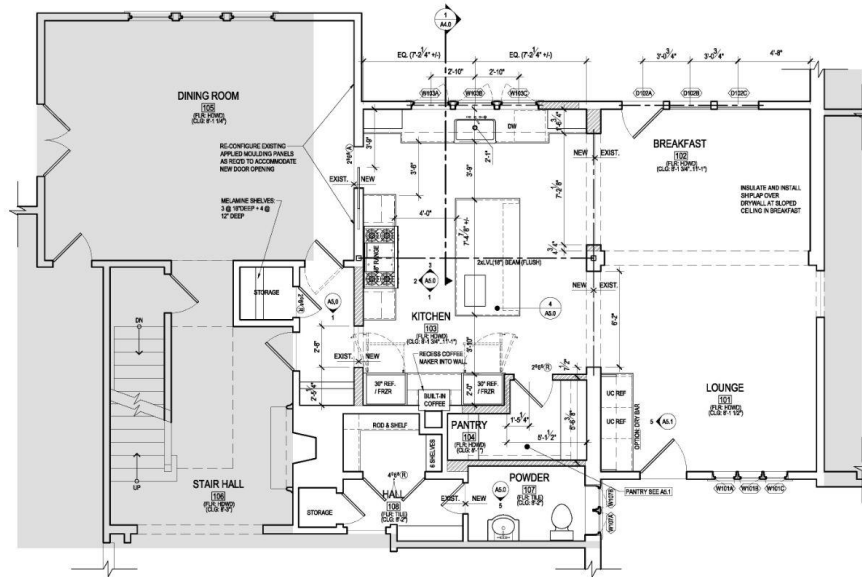
The homeowners of this historic 1944 home enjoy entertaining; however, the connection between adjacent spaces was closed off and disrupted the flow. The compartmentalized kitchen spaces were tight and dysfunctional, divided in two by a masonry bearing wall. Additionally, the dark oak floors and timbers made the area feel cavernous. The clients desired to create a better flow between their kitchen and the adjacent spaces. This remodel aimed to combine the existing kitchen and secondary prep kitchen, improve the connections between the two rooms, and highlight the outdoor view.

One challenge was how to address the dysfunctional compartmentalized spaces and flow. The spaces were closed off from each other by a center-bearing wall. We removed the bearing wall and replaced it with a new beam to support the second-floor bedrooms above. This allowed the partitioned kitchens to be merged into a single, spacious area with a bank of windows and enlarged openings. As a result, the kitchen, dinette, and lounge were connected, creating a bright, expansive kitchen. A new pocket doorway was added to connect the kitchen and the formal dining rooms to improve circulation and allow daylight through. The lounge and dinette functions were swapped, giving these functions better proportions. This design decision allowed for amazing views and connection to the outdoors from the dinette.

The clients were pleased with the transformation. The kitchen was no longer cramped, dark, and closed off. The remodel combined the existing kitchen and secondary prep kitchen while also improving the connections to the adjacent spaces and to the outdoors. The kitchen transformed beautifully to have a great flow to its connecting spaces, a light airy feel, and tons of natural light.



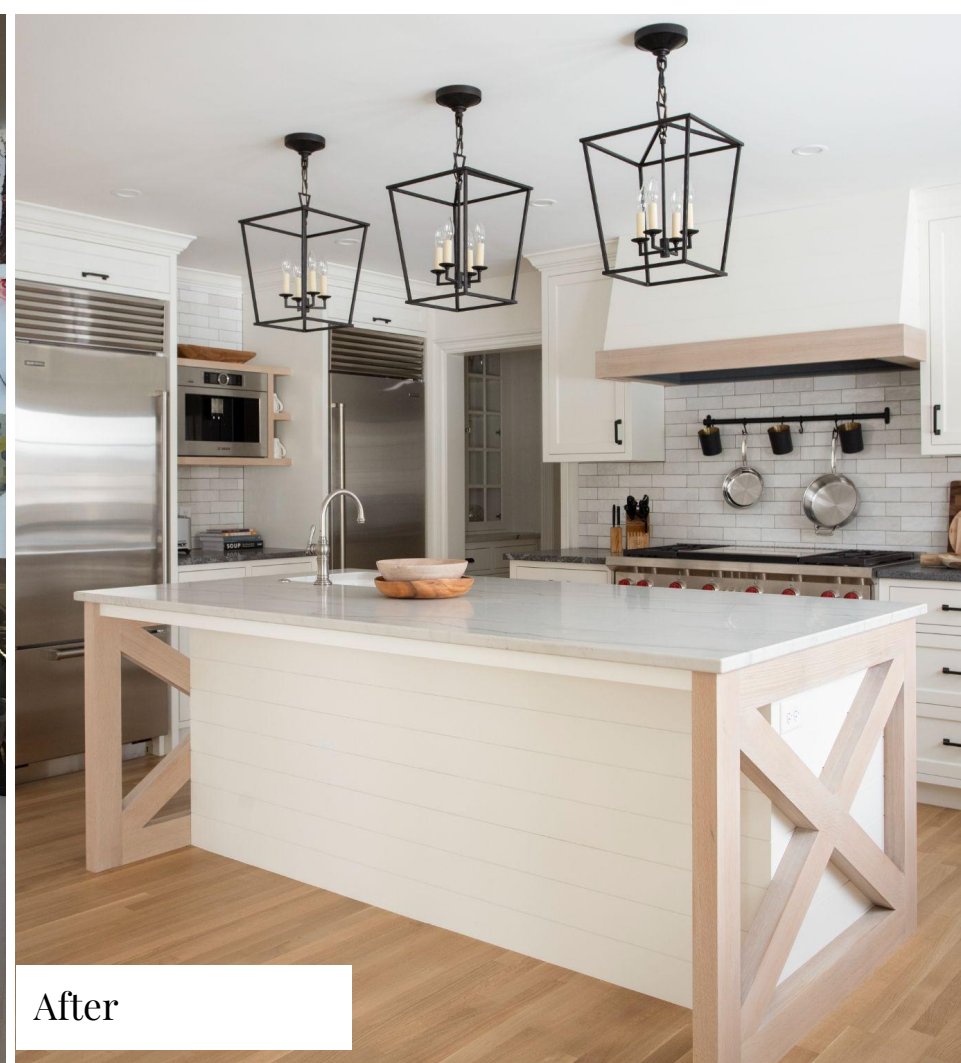
Before



After

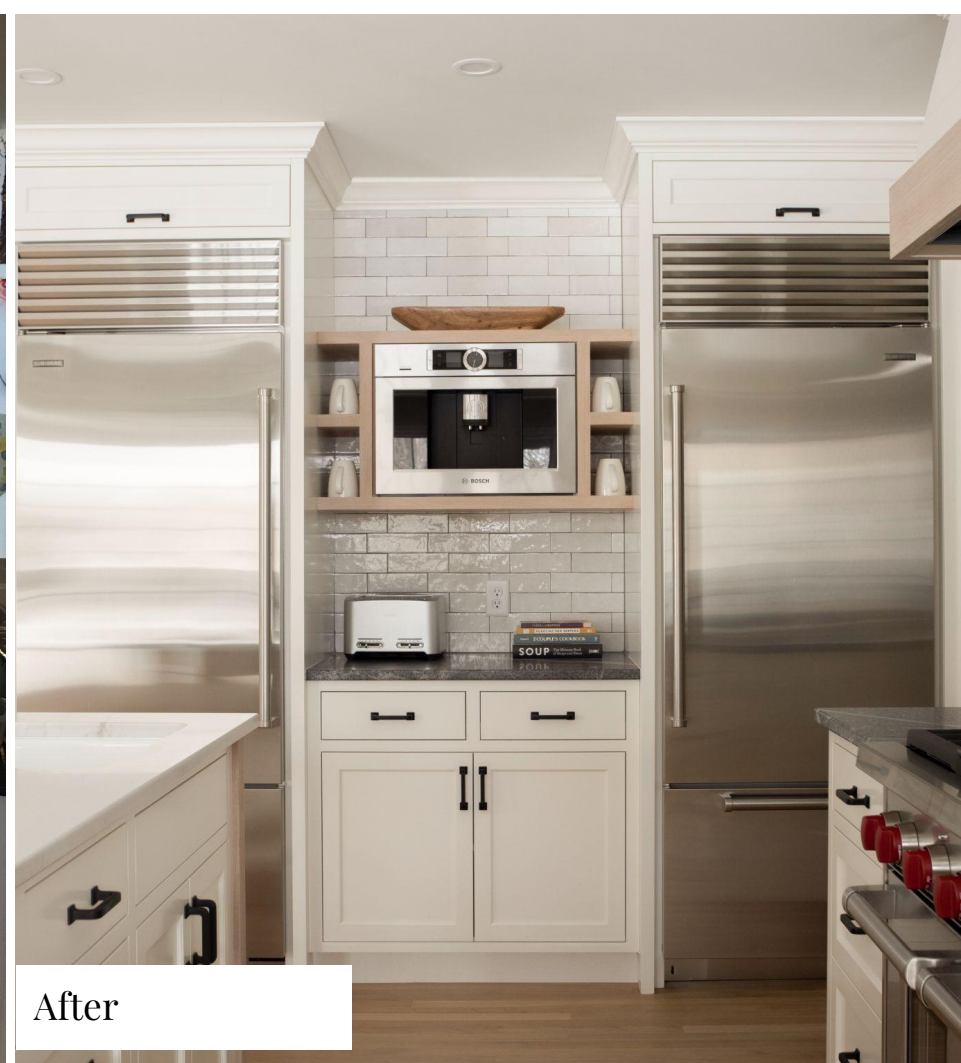


After

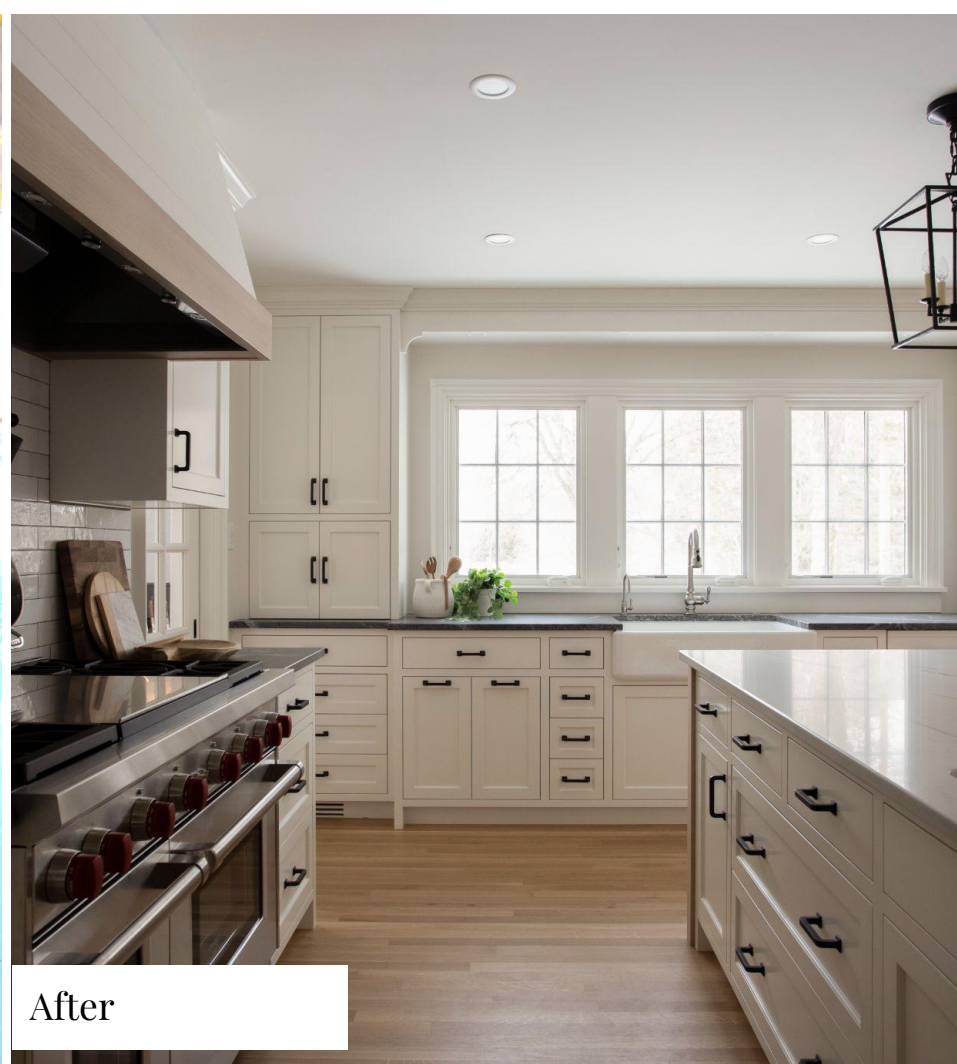


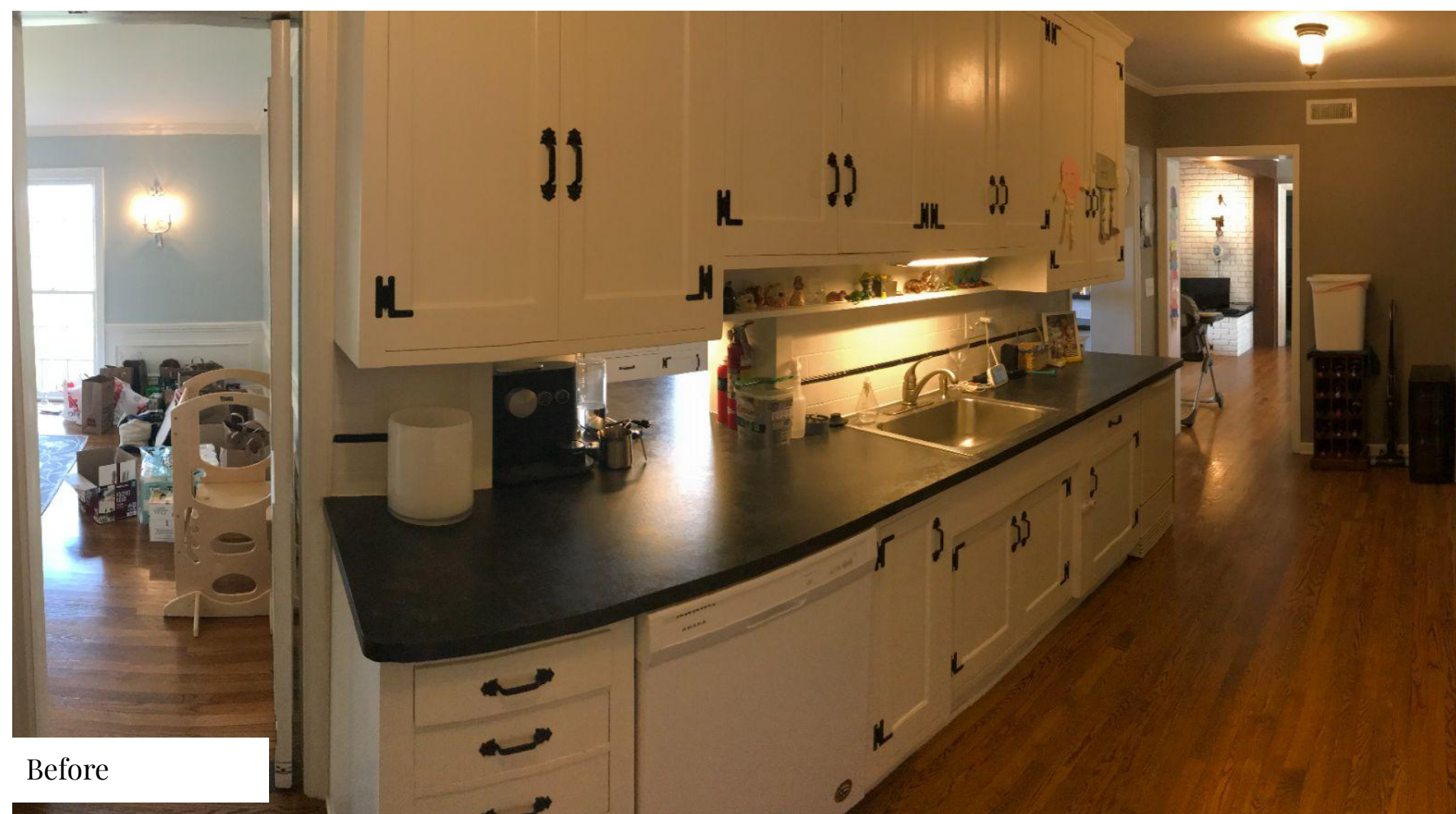


Before



After





Before



After

