

Uptown Suite

Residential Interior \$100,000 - \$250,000

Uptown Suite

Residential Interior \$100,000 - \$250,000

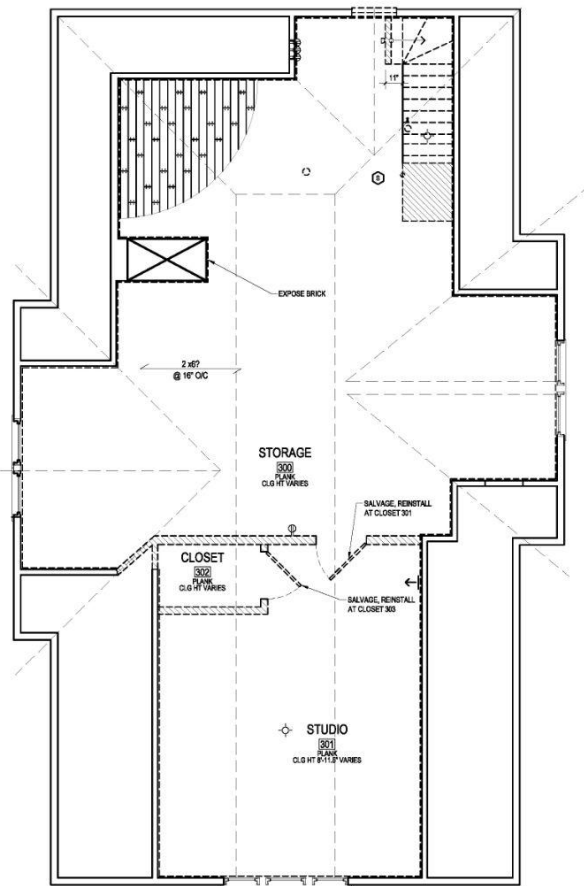
This home, built-in 1900, transformed what was once an old, uninhabitable attic into a spacious and sophisticated primary suite. The clients saw potential in their large unused attic. This remodel utilized the existing angles of this historical house to create a suite with three separate zones. First, a spa-like bathroom with a soaking tub and elegant finishes. Second, a sizeable bedroom with a multi-sided built-in fireplace. Lastly, an open alcove with large windows, and a suitable sitting space.

One challenge this project faced was how to create a safer stairway leading up to the attic. The existing stairs were dangerous and shallow and did not provide any safeguard railing. To confront this issue, we had to move the hall into the second floor, reducing the size of one of the second-floor bedrooms. The new stairs were beautifully integrated into the previous historical architecture of the home's hallway.

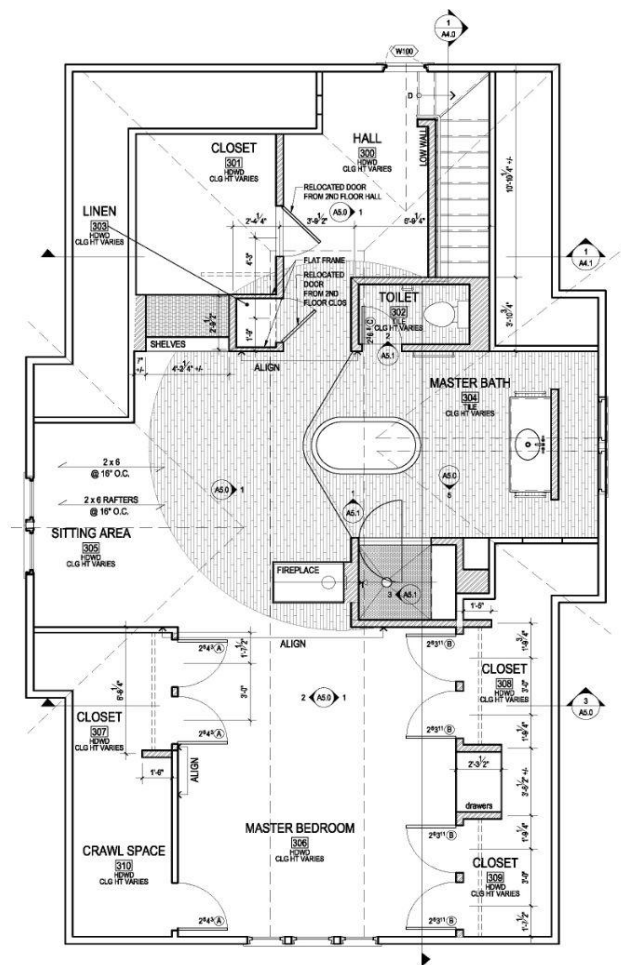
A second challenge we faced was the restrictions of this home due to being a house in the historic district. The windows were not allowed to be changed; thus, they had to remain untouched. To address this, a vanity wall was added in front of the existing windows. This allowed the low-silled and awkward dormer windows to give reflected daylight that enhanced the space, without having to look across into their neighbor's attic.

Lastly, there was a challenge regarding the placement of plumbing locations and head height. To address this, we had to raise the level of the bath area to allow for plumbing drainage. The raised bath area gave it a defined significance, emphasizing the freestanding tub. Additionally, the owners wanted to be able to see the new fireplace from both the tub and the bed. This gives each of the areas a defined space without adding walls, keeping the attic space light and airy.

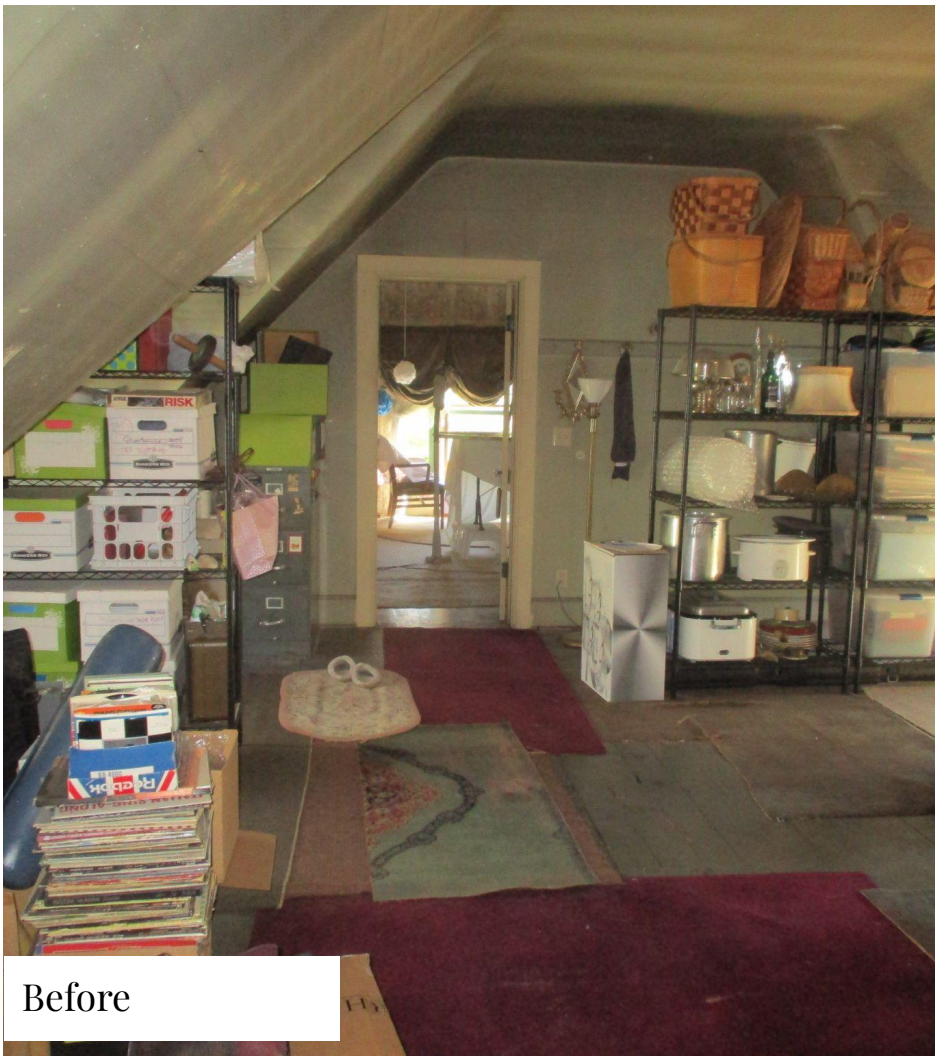
This attic started as dysfunctional and dark with plenty of unused space. This remodel took advantage of the spacious attic and unused potential and created a beautiful primary suite with three defined areas. There was no need to add walls, which resulted in the attic having a light and airy feel. The clients were ecstatic to take this unused space and transform it into three functional areas; a bathroom, bedroom, and sitting area. Not to mention their favorite part, the multi-sided fireplace visible from both the bathtub and the bedroom!



Before



After



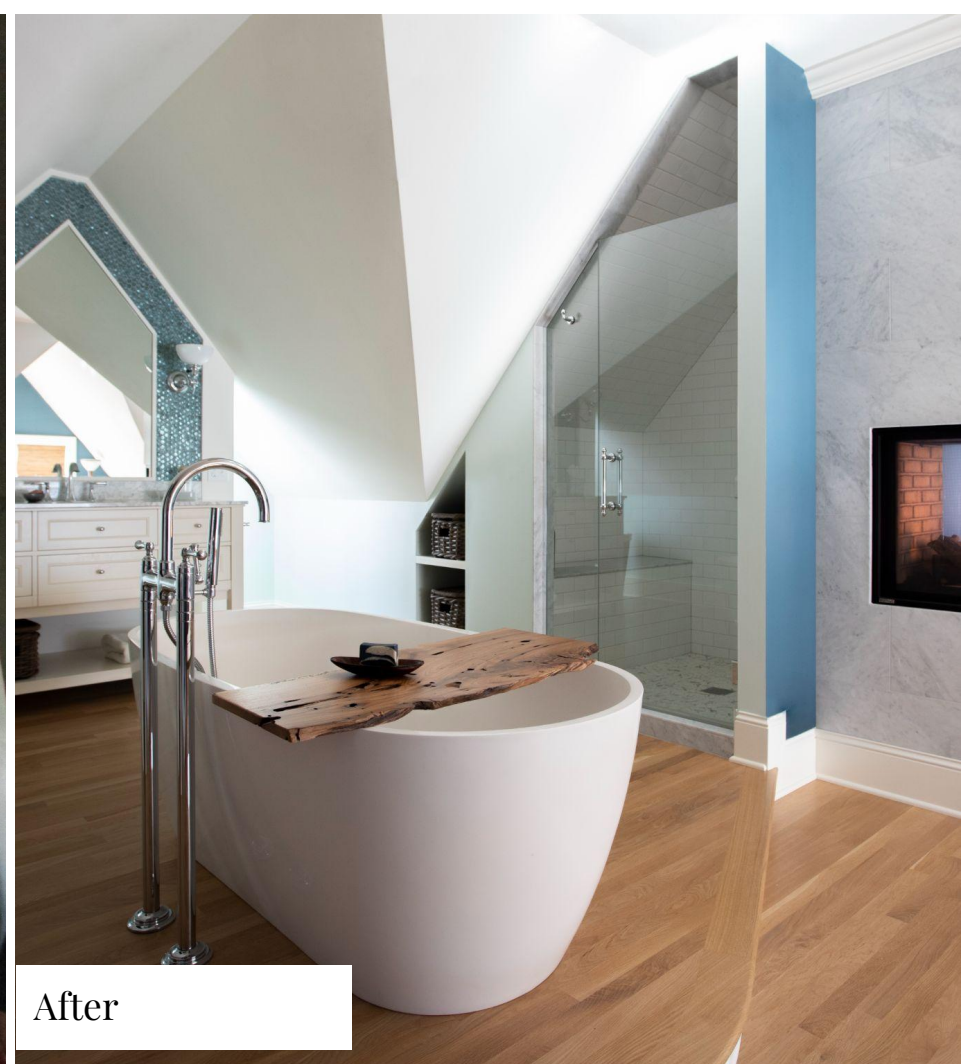
Before



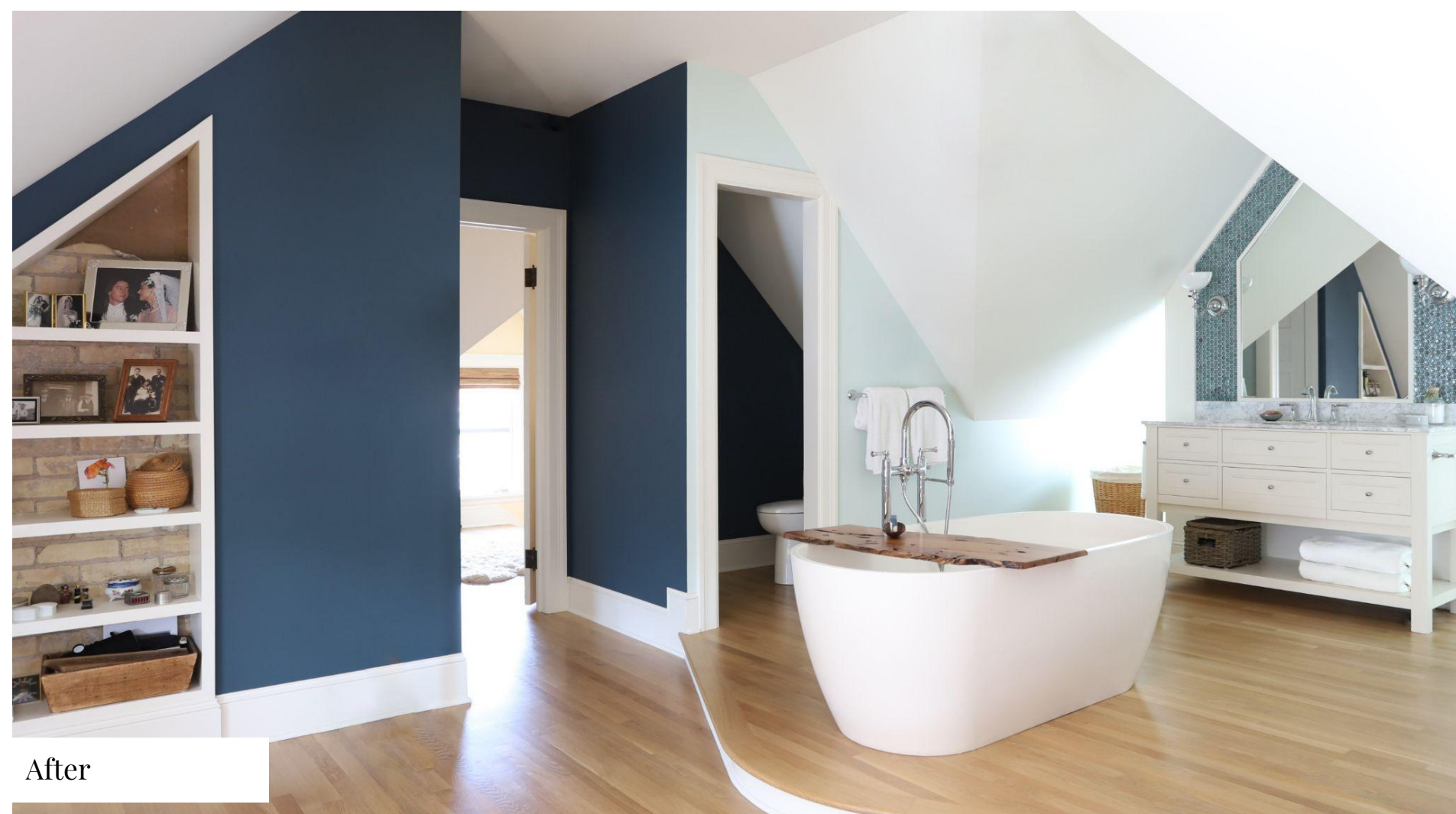
After



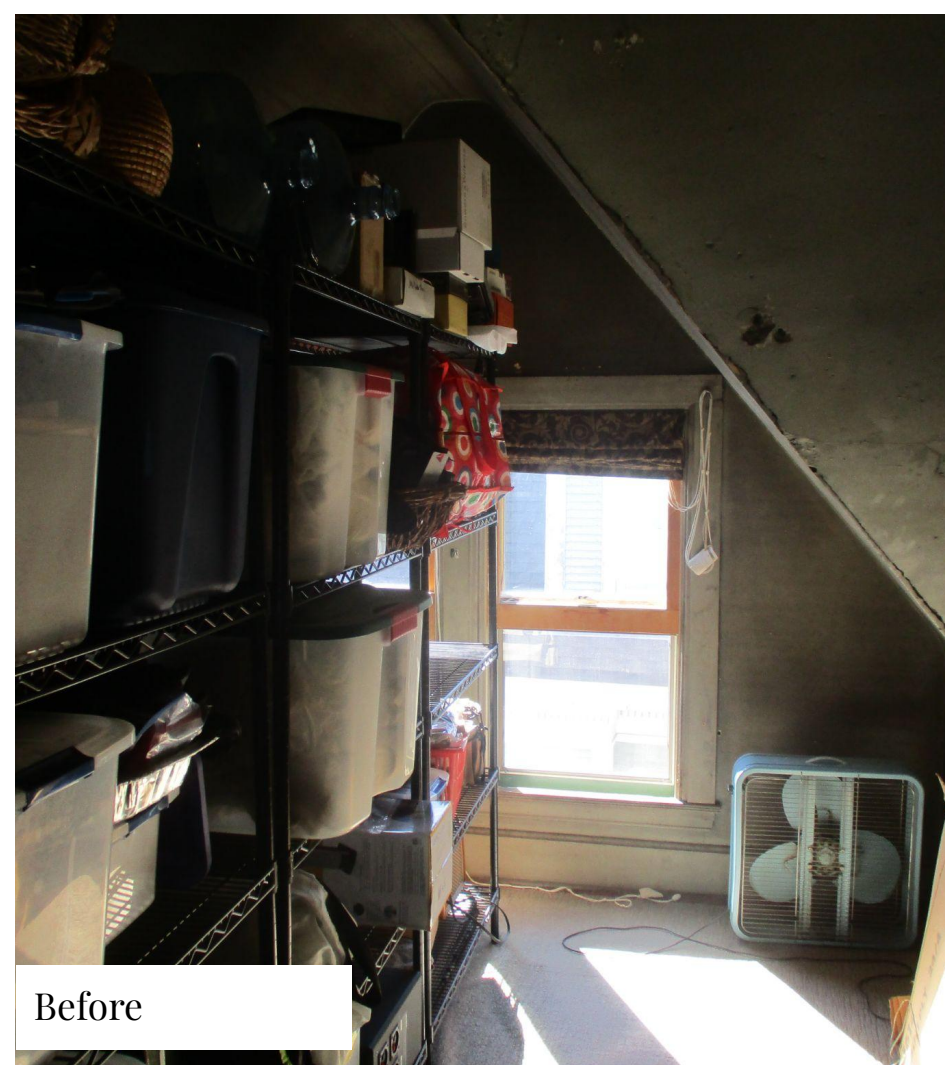
Before



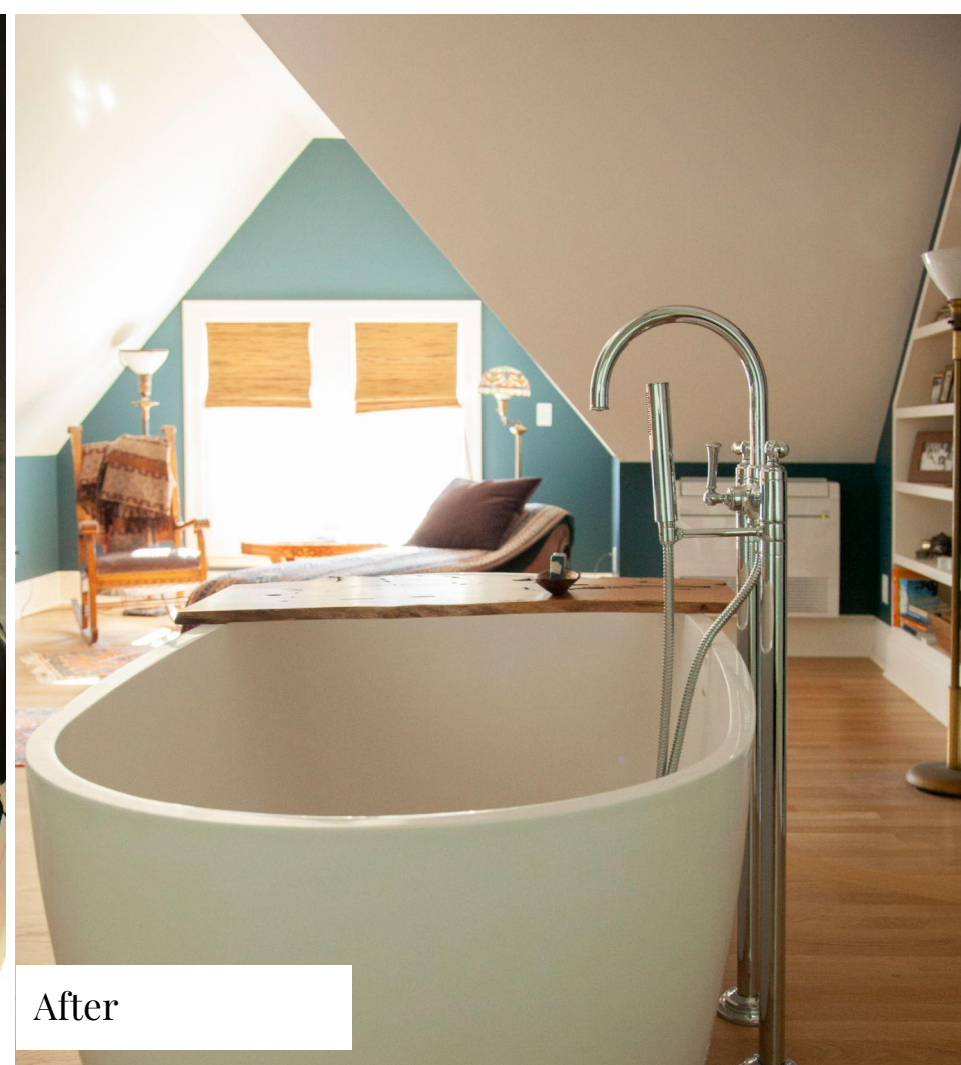
After



After



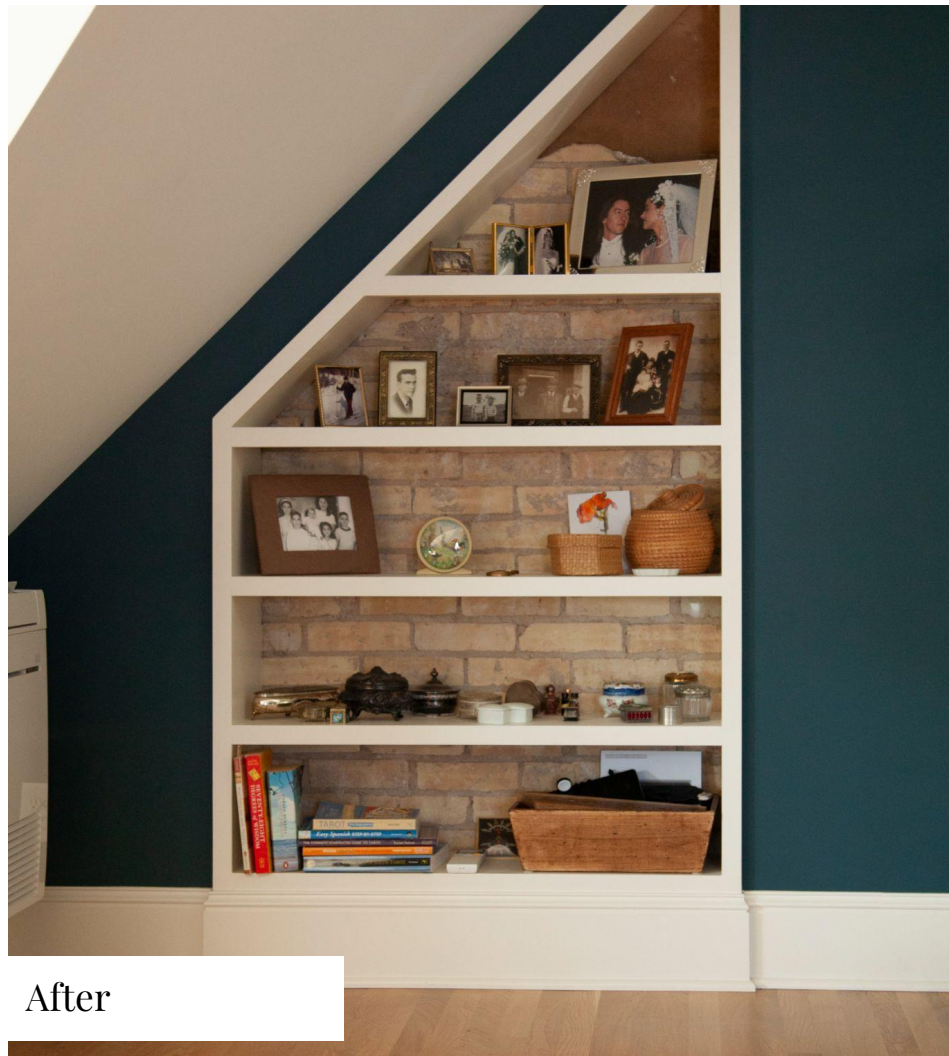
Before



After



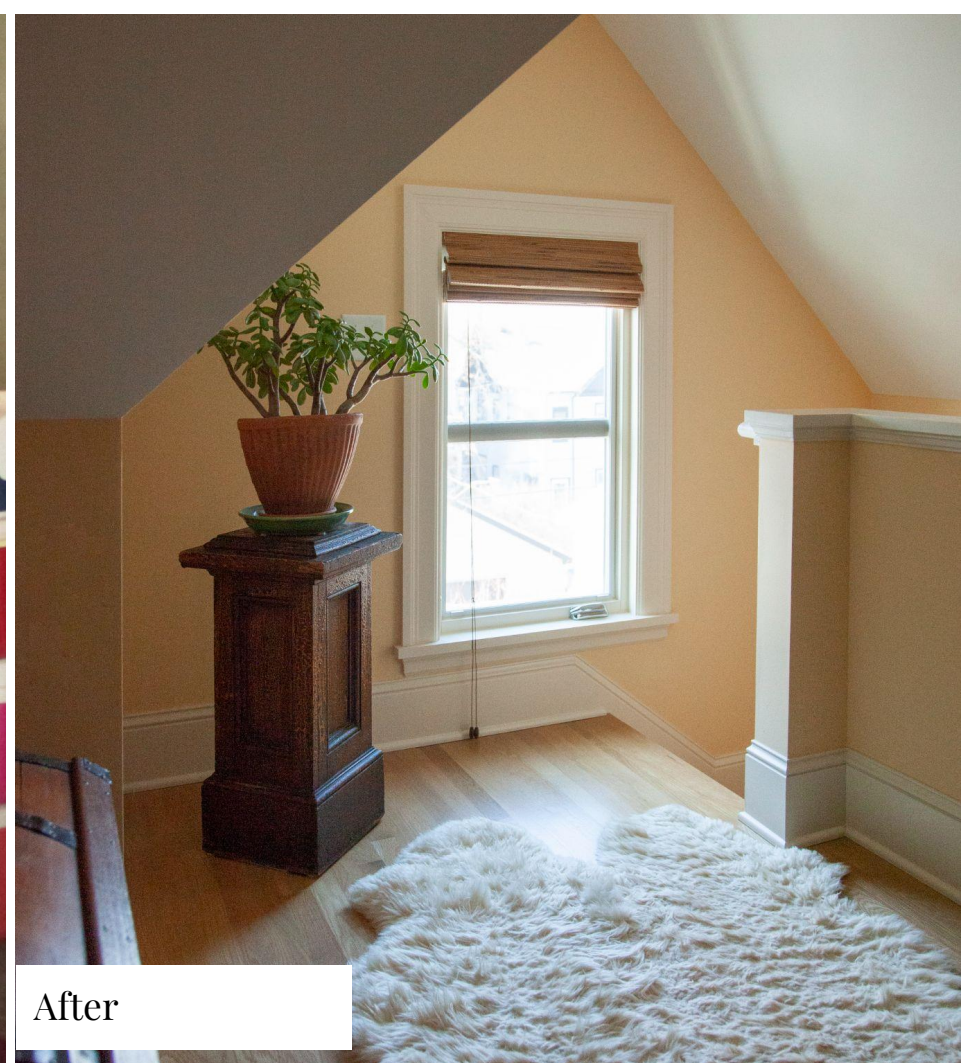
Before



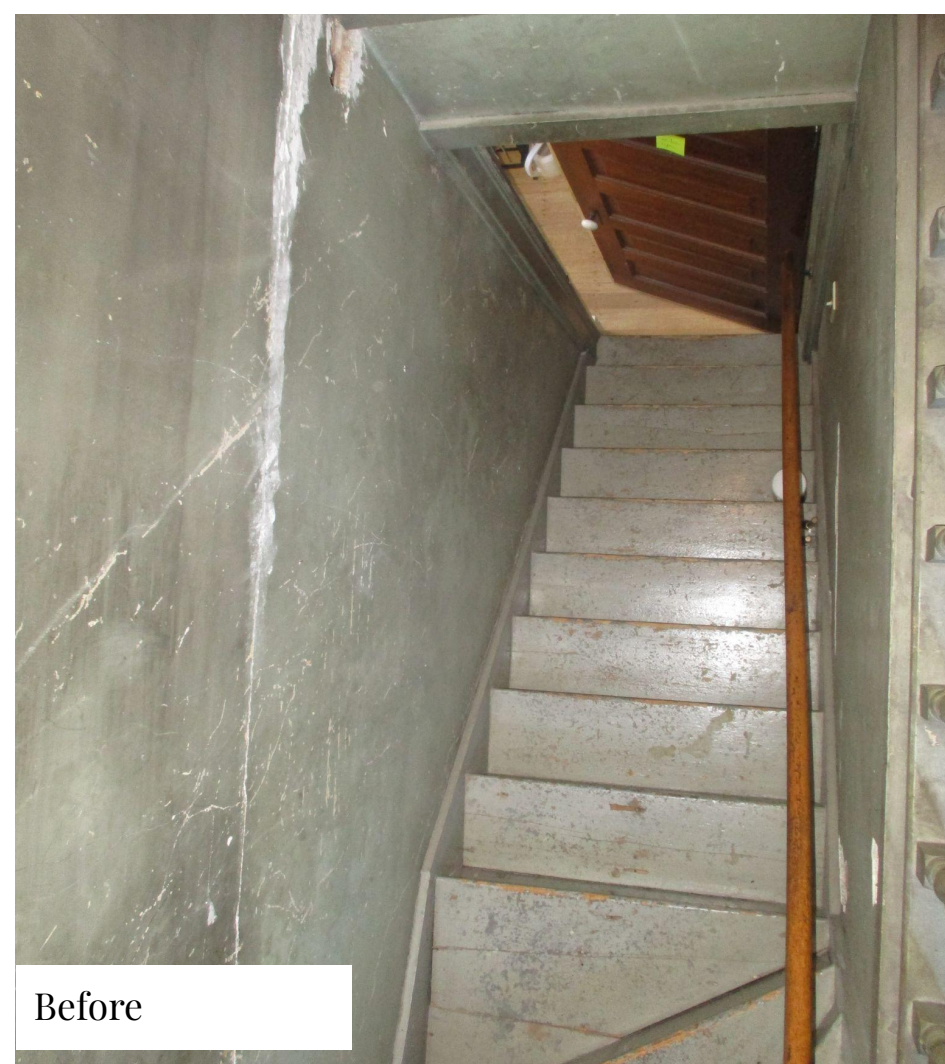
After



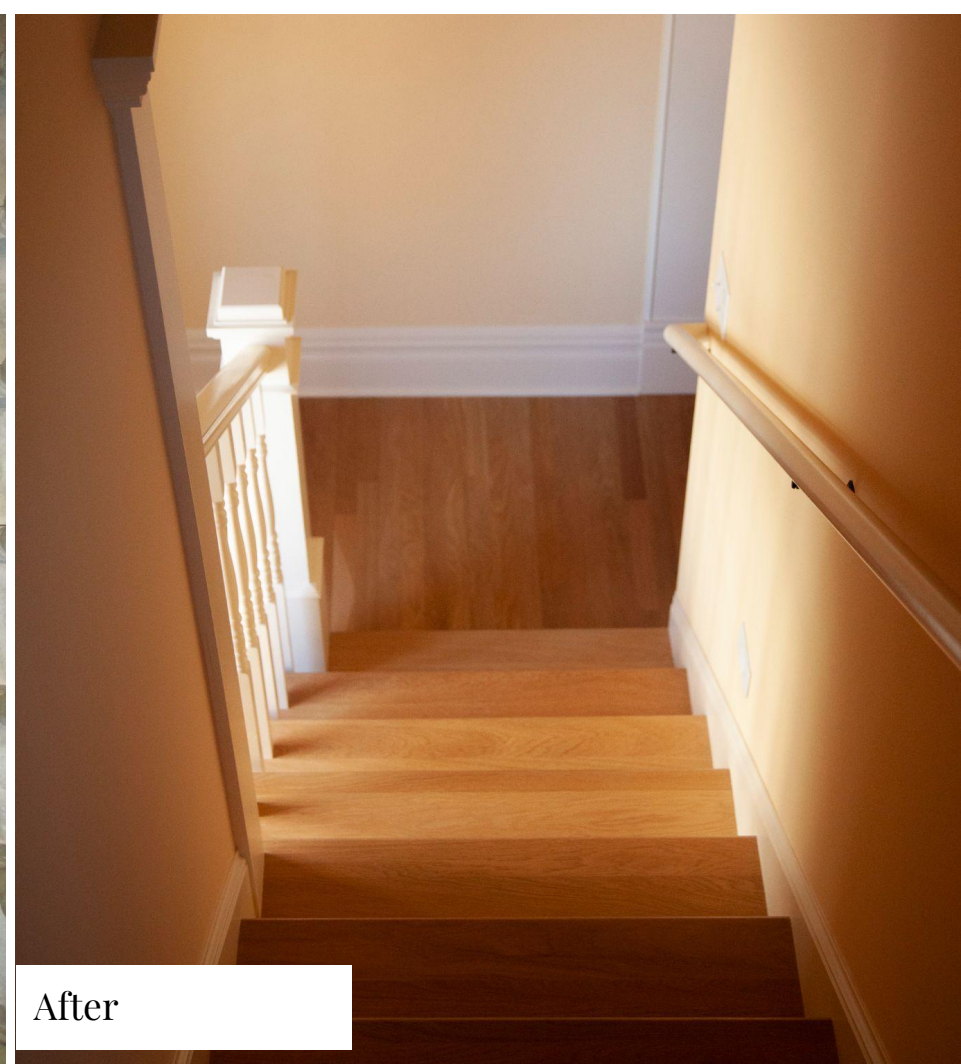
Before



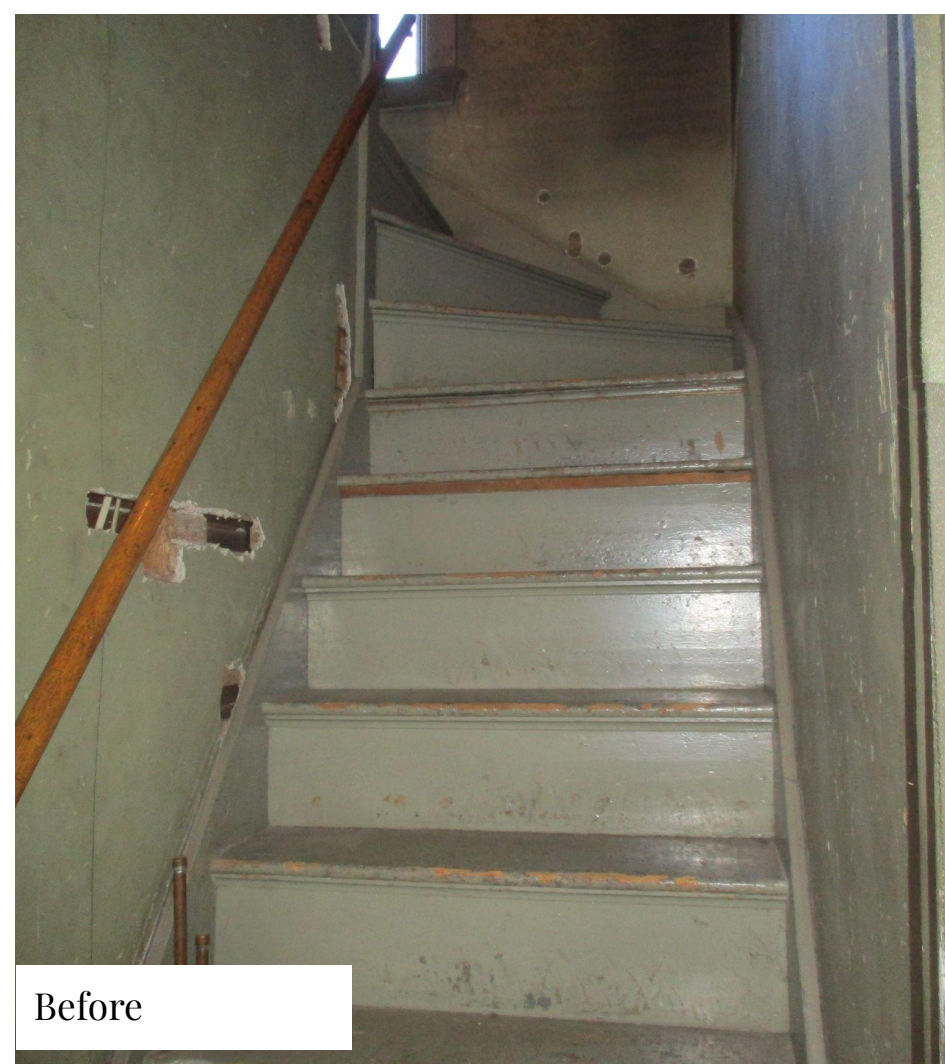
After



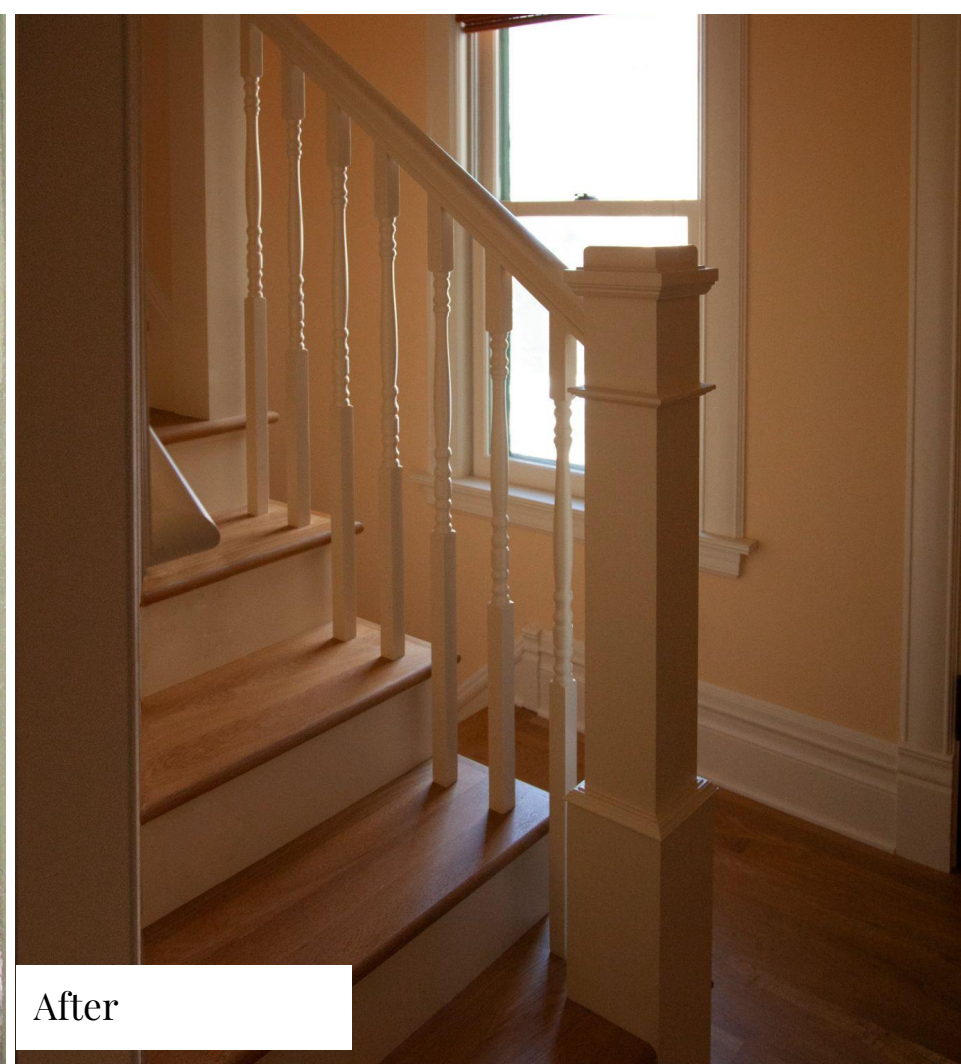
Before



After



Before



After