



## NARI - 2022 COTY AWARDS

Category: Residential Interior  
\$250,000 to \$500,000  
Project: CREATING CONNECTION

Nestled into a rolling wooded neighborhood, the family enjoyed that their home offered a slice of nature in the heart of a metropolitan area. But the view to the back yard was limited. Inside the home was dated and lacked the clean, open flow they wished for. With deliberate planning and a keen eye, the entire main floor now offers unlimited functionality and cohesive, connected spaces for the many activities and entertaining that this active family of five enjoy - as well as a stunning wall of glass for watching the deer and turkeys who inhabit the surrounding landscape.

### Client Needs:

- It all started with a dark, cramped kitchen that required a complete overhaul in order to achieve the open, chef-style workspace the homeowners dreamed of
- Provide a less-cramped, more-intuitive back entry full of efficient and inviting utilitarian spaces
- Create a cohesive architectural aesthetic throughout the home by offering a seamless mix of clean-lined, traditional and modern elements
- Elevate areas for various types of entertaining
- Create connection to the outdoors

# NARI - 2022 COTY AWARDS

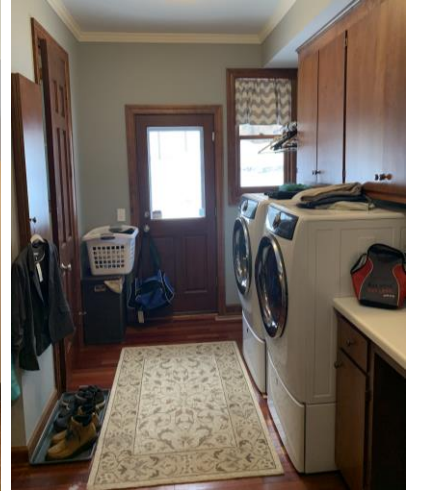
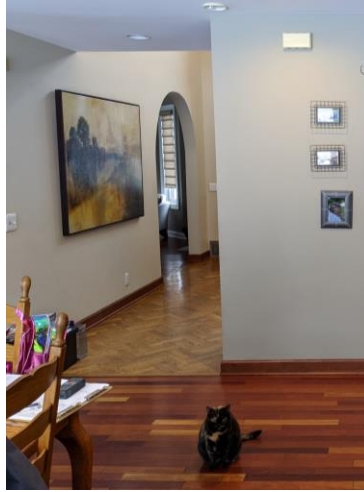
## CREATING CONNECTION

### Before Photos

The original kitchen work zone was pushed into the corner of a large room, and the only view to outside was at the sink. Rather than utilizing all available space, an odd, L-shaped island was dropped into the center of the room with inefficient cabinet doors and drawers that couldn't be open at the same time due to their configuration. An unusual L-shaped soffit detail mirrored the island below and was mounted to one of the many clunky, dropped HVAC soffits. The remainder of the kitchen included an entire blank wall with no storage or functional use leaving a wide-roaming, open space with little purpose.

The back entry was generally an ill-planned hallway with a series of closets and doors for storing a variety of items. Also, the loading area for the washer and dryer was awkwardly located directly in front of the back entrance. This poorly-designed workspace in effect created more disorganization and disfunction. Overall, the home also suffered from having no cohesive aesthetic, and clunky, abrupt connections. Finishes, hardware, and lighting were worn and out of date. Even the flooring created confusing transitions: from oak herringbone in the front of the home to cherry wood across the back.

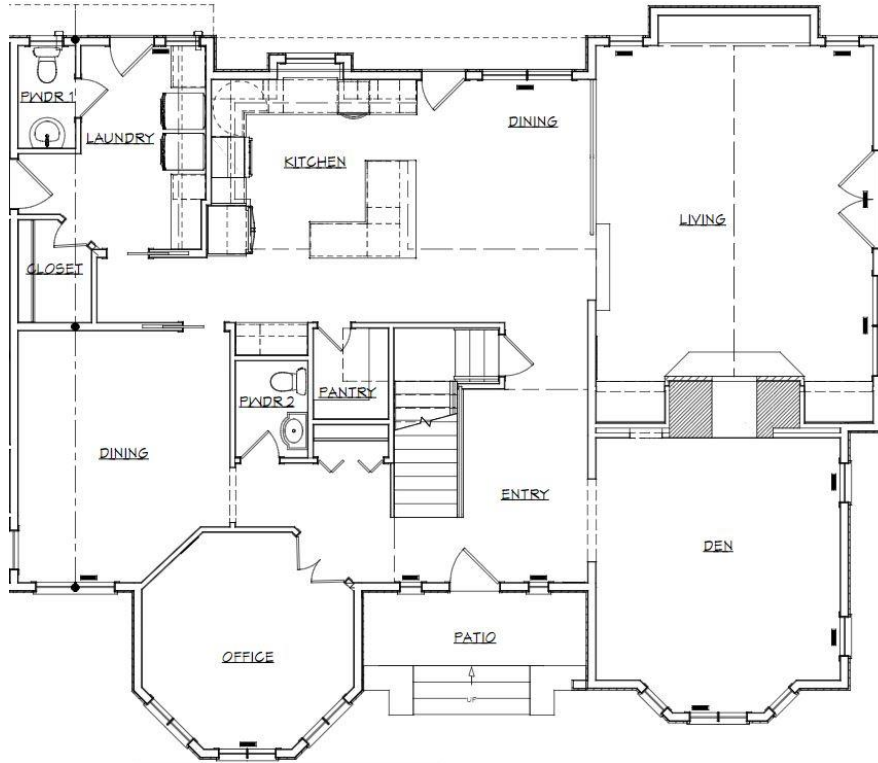
It was time to think critically about a cohesive plan for this main floor and for the family who loved where they lived.





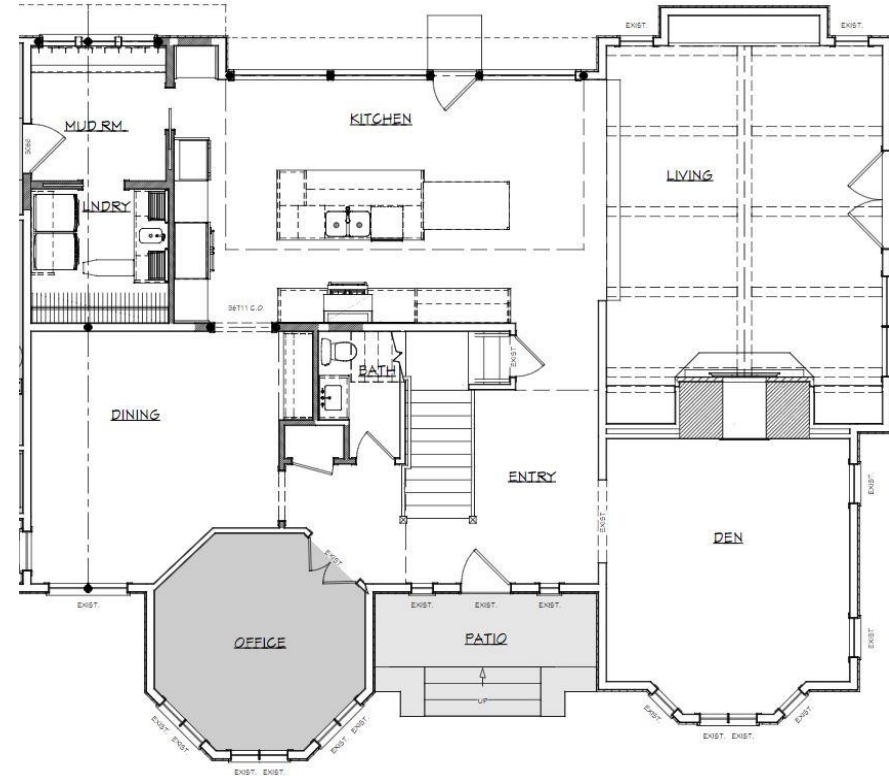
## NARI - 2022 COTY AWARDS CREATING CONNECTION

BEFORE



**Before:** When this large home was originally built, there wasn't much thought given to maximizing functional spaces and storage - nor in creating cohesive flow of both the spaces and the materials.

AFTER



**After:** By diligently reorganizing the utilitarian areas and creating a more open floor plan with lots of added windows to the back, the homeowners were able to realize their dream home on the lot that they so loved.

## NARI – 2022 COTY AWARDS CREATING CONNECTION



### Definition

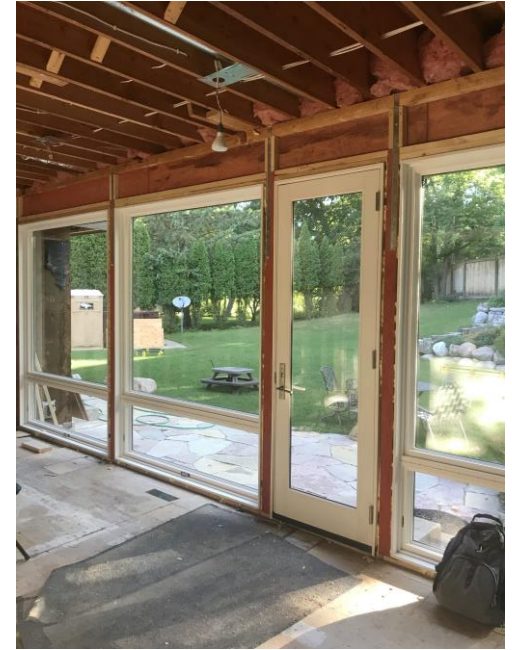
The major objective for the kitchen was to design a tight and efficient work triangle surrounded by plenty of designated, custom storage for the various types of tasks at hand.

Now in the new space, the cook has their own area to prepare meals while never missing a beat in the various conversations or activities happening around them – from homework on the island, to dinner at the table, or maintaining conversation with guests in the adjacent living room.

The homeowners' favorite transformation is that by designing the kitchen workspace along the main interior wall, it streamlined the traffic pattern and allowed for a floor-to-ceiling wall of windows that runs the whole length of the kitchen providing an expansive view of the nature all around them.



DURING



BEFORE



Open & Closed Breakfast Bar



# NARI – 2022 COTY AWARDS CREATING CONNECTION

## Hidden Efficiencies

Now that there’s plenty of room with the main workstation pulled to the center of the home, space is freed-up minimizing traffic patterns and creating connection and flow. The generous galley work zones provide ample room for numerous family activities to happen simultaneously within the same space.

In order to do this no organizational detail was left unmapped on the cabinet shop drawings. Cabinets were highly-customized with numerous, efficient storage solutions for all their belongings and needs.

A repetition of crisp ship lap and running-bond glossy, hand-mold tile offers a fresh palette along with subtle wood accents and new wide-plank flooring.



BEFORE



DURING



## NARI – 2022 COTY AWARDS CREATING CONNECTION



### Light & Inviting

Removal of the heavy brick sections on either side of the fireplace softened the space and allowed for understated, custom cabinetry and multiple layers of lighting to create a more human-scale space ready to adapt from family movie nights to adult gatherings. The repetition of light finishes and hints of warm wood add to the elegance and sense of calm the homeowners craved.

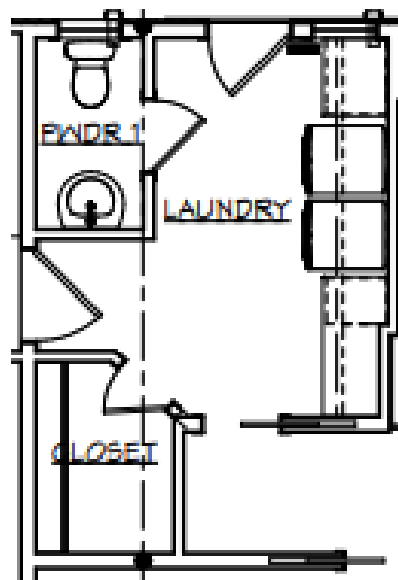
AFTER



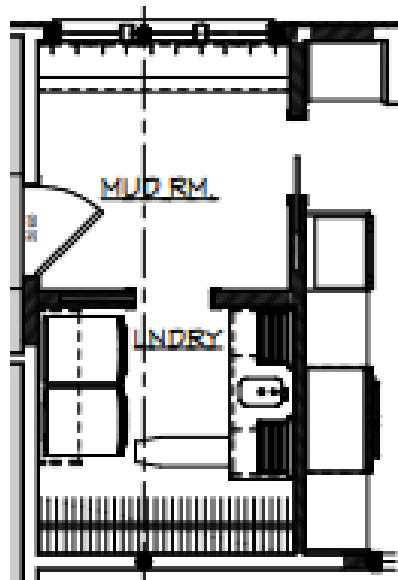
DURING



NARI – 2022 COTY AWARDS  
CREATING CONNECTION



BEFORE



AFTER



**BACK OF THE HOUSE**  
A dysfunctional entry/mudroom/laundry offered no sense of welcome when returning home, but now it's open, airy and organized with a highly intuitive layout. Natural light floods the hard-working, unified space. And the entire space can now be closed off from guests or for pets with a single hidden pocket door.





# NARI – 2022 COTY AWARDS

## CREATING CONNECTION



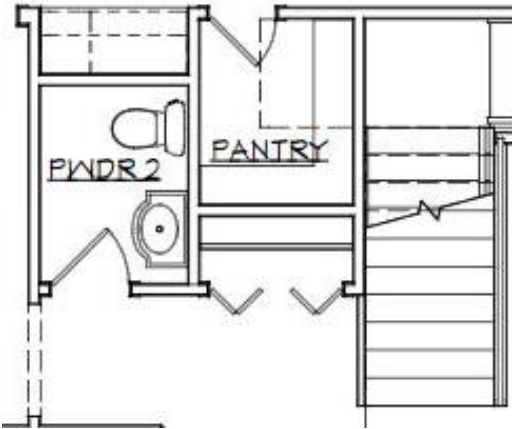
### Flipping for Efficiency

The rooms across the front of the home were also re-imagined. By switching the powder room with the entry closet, it allowed what was previously a stark, unadorned dining room to become more gracious, customized formal space with generous crown moulding and a custom built-in buffet.

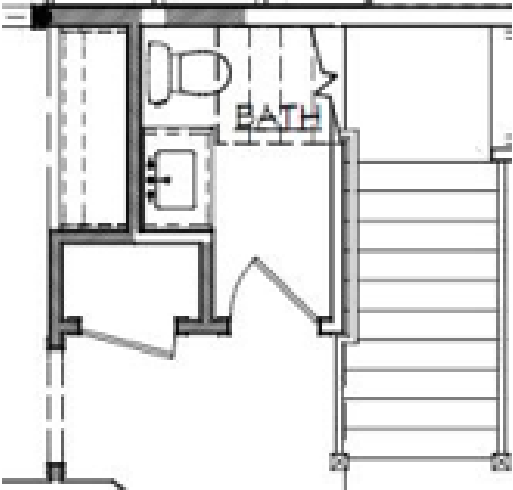
The newly relocated powder room repeats the blend of modern and natural elements, and a swath of wallcovering provides the perfect “wall of art”



BEFORE



AFTER





## NARI – 2022 COTY AWARDS

### CREATING CONNECTION



#### Harmony

The two remaining rooms at the front of the home weren't left out of the refresh. The den got a revamped fireplace with stunning onyx tile and a blue granite hearth. While the existing study received a sophisticated transformation and a re-boot into a "Covid-inspired" office. Both rooms as well as all hallways received the same beautiful wide-plank flooring as in the rest of the main floor.

