

NARI MINNESOTA - 2022 CoTY AWARDS

PROJECT: MODERN FARMHOUSE **CATEGORY:** RESIDENTIAL KITCHEN \$100,001 TO \$150,000

Completed in 2021, this 1980s Eagan kitchen was transformed for avid home chefs to foster their love of cooking and entertaining, with the farmhouse style they'd been dreaming of as the jumping-off point.

Coming to us with a drab aesthetic and overcrowded space, removing a wall became our first step, requiring many of the mechanicals to be relocated. Within the newly opened floor plan, the layout remained a hurdle as we strived to keep an efficient working triangle given the overall size of the space.

Now transformed, this space is ideally suited for entertaining - light-filled, open and overflowing with much-anticipated features including large pantry and beverage station. An eight-foot-long island topped with crisp white quartz countertops provides abundant food prep space with a built-in prep sink, an additional beverage fridge and ample seating. A baker's table at the end of the island with storage for cookbooks cements the island's status as a chef's dream.

Guided by a modern farmhouse aesthetic, the new space exudes effortless charm. Swiss oak praline-colored flooring grounds the space, while quarter-sawn white oak cabinetry provides warmth, flowing seamlessly with additional white oak features throughout. Brushed bronze pendant lights with clear glass globes hang above the island providing light without disruption as your eye travels the length of the room. Along the back wall beckons a farmhouse sink set under an expansive light-welcoming window, a beautiful accompaniment to the scene-stealing pale blue subway tiles that flow to the ceiling.



BEFORE PHOTOS

Pictured clockwise starting in upper left corner:

- 1) Existing kitchen, exterior wall and wall dividing kitchen and dining room
- 2) Existing kitchen, interior wall
- 3) Existing kitchen, entire kitchen view
- 4) Existing dining room

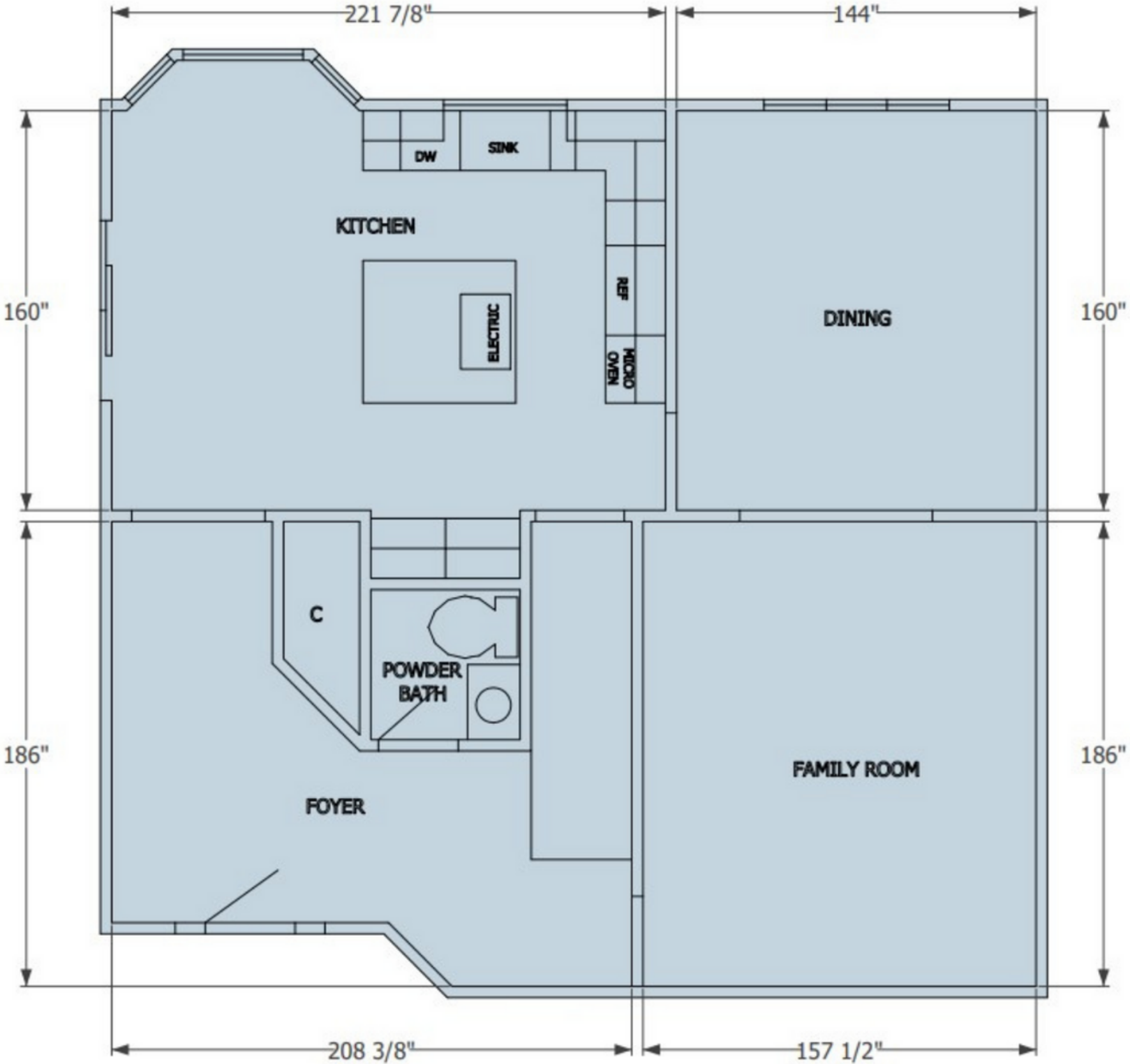


CLIENT REQUESTS

- Remove current island for more spacious feel
- Client family loves to cook together, wanted more space to allow multiple cooks in the kitchen at once
- Better flow as the existing oversized island made moving around the kitchen difficult
- Wanted a space with features designed for entertaining, including a beverage station
- More storage, existing kitchen lacked storage despite its size
- Client loved the modern farmhouse aesthetic and wanted it incorporated into their design



BEFORE SITE PLAN



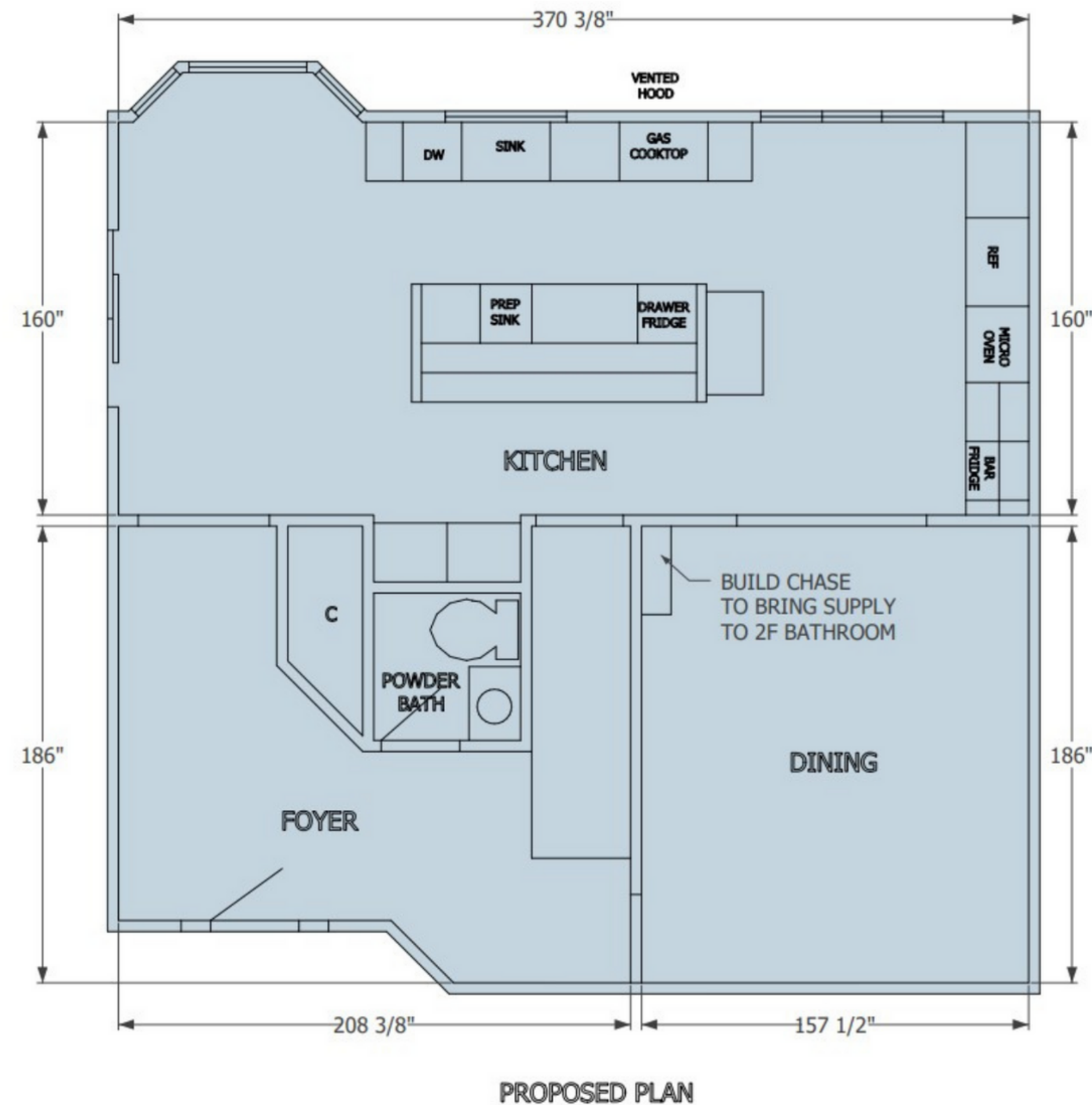
EXISTING PLAN

AFTER SITE PLAN & LAYOUT CHALLENGES

With a remodel of this scale challenges were plentiful. It was of little surprise that we had to relocate many of the mechanicals as we removed the wall between the kitchen and dining room.

Layout challenges were our biggest hurdle as we strived to keep an efficient working triangle given the overall size of the kitchen. With the sink and cooktop on the exterior wall and the fridge on the far end, the distance between the pieces was farther away than normal. To compensate for this, we added a double drawer fridge in the center island to act as a prep fridge.

In terms of storage, we had to balance the amount and placement of shelving with the desire to keep the space open.



BEFORE AND AFTER



FUNCTIONALITY

This kitchen is equally packed with function and style.

The far wall houses a large pantry clad in white, a fridge with overhead storage, and an oven/microwave combination. These elements nestled together within easy reach of the island prep area simplify the cooking process.

Nearby, a beverage station with beverage cooler, wine shelves, and radiant glass door cabinetry ensures easy access for family and guests.

An eight-foot-long island topped with crisp white quartz countertops offers abundant food prep space with a built-in prep sink and ample seating.

A baker’s table at the end of the island is topped with butcher block and offers storage for cookbooks to cement the island’s status as a chef’s dream.



AESTHETICS

Swiss oak praline-colored LVT flooring grounds the space, while textured quarter-sawn white oak cabinetry provides warmth and interest.

Additional nuanced white oak features include a crossbuck panel on the end of the island and a custom wood-accented hood above the range. Both give an understated nod to the farmhouse style.

The custom hood is flanked by architecturally inspired brushed bronze sconces.

Brushed bronze pendant lights with clear glass globes hang above the island providing light without stopping the eye from traveling the length of the room.

The back wall houses an expected, but nonetheless impressive, farmhouse sink set under an expansive light-welcoming window.

White oak floating shelves with black brackets stand out against the pale blue subway tiles in varying sheens that flow to the ceiling.

These elements work harmoniously with the rest of the space to create a neutral yet visually interesting design.

