

# NARI MINNESOTA - 2022 CoTY AWARDS

**PROJECT:** SEA SALT SERENITY      **CATEGORY:** RESIDENTIAL BATH \$25,000 TO \$50,000

Completed in 2022, this Mendota Heights bathroom came to us as a ‘love it or list it’ moment from homeowners desperately seeking a solution for their space.

Jumbled by an ill-conceived layout, our homeowner’s source of greatest discontent was an incredibly small shower paired with an oversized tub that absorbed much of the useable square footage. Storage was extremely limited, and the vanities and sinks were split up on opposite walls.

The new design is beautifully reconfigured. A significantly larger shower with a striking matte black semi-frameless shower surround sits where an oversized space-gobbling vanity once lay. Simple yet modern white subway tile grace the new shower walls, providing high contrast to a black frame and pairing playfully with the grey penny round accent and floor tiles. Along the far wall sits a smaller alcove soaking tub, far better suited in size.

A new dual sink vanity with ample storage in the center and topped by a frameless mirror makes the entire room feel larger. Meanwhile, a new white linen closet situated in the corner that previously housed the shower maximizes storage and functionality.

Stylistically, the new design implements a serene, modern vibe – a picture of calm serenity. The combination of white cabinetry, quartz countertops and Sherwin Williams Sea Salt wall color pairs classically with contemporary black fixtures and accents. The contrasting white and black balance one another, creating a place of quiet serenity for our homeowners to greet and end each day.



# BEFORE PHOTOS

Pictured clockwise starting in upper left corner:

- 1) Existing bathroom, view from far wall
- 2) Existing bathroom, view of right-hand wall
- 3) Existing corner vanity
- 4) Existing shower and second sink area

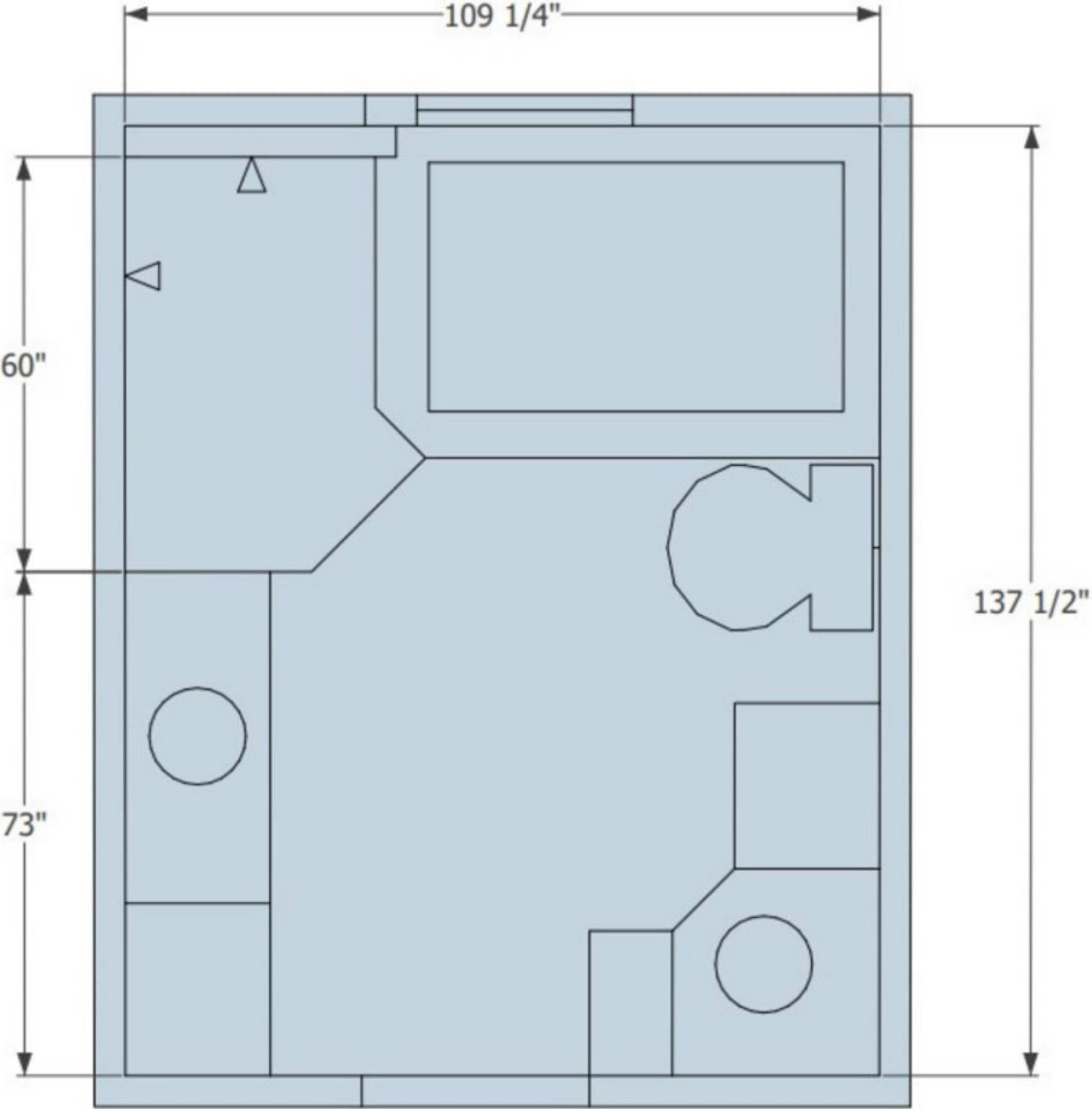


# CLIENT REQUESTS

- Larger shower space
- Replace oversized tub and tub deck, which absorbed much of the useable square footage.
- Do away with split vanities
- Rework layout as a whole which, despite a previous remodel, felt jumbled and ill-conceived
- Added storage space
- A calming, tranquil aesthetic



BEFORE SITE PLAN



# AFTER SITE PLAN & LAYOUT CHALLENGES

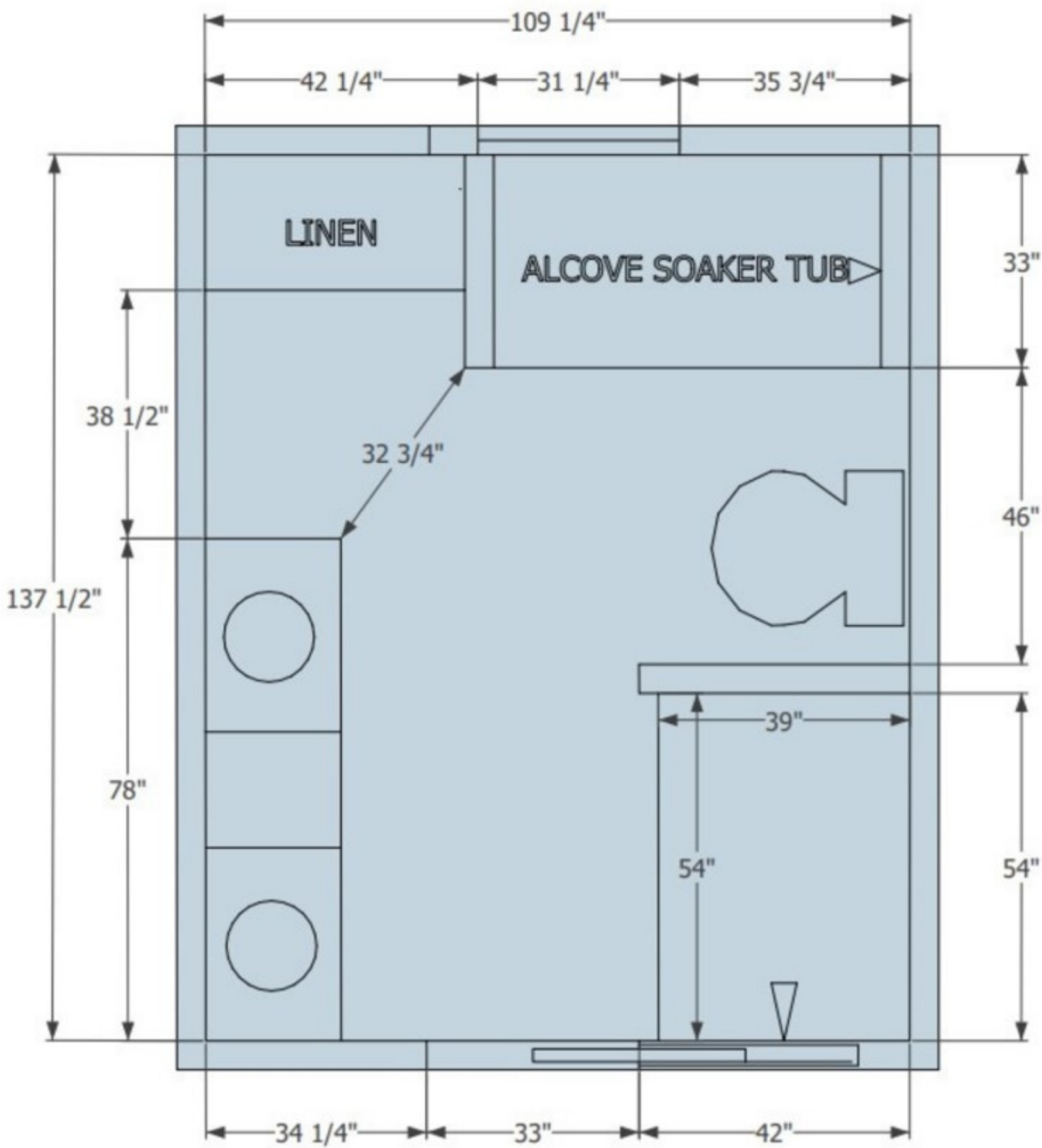
The biggest challenge with this project was the reworking of the layout.

The balance between minimizing major changes to keep the budget in check and delivering on our client's requests was a challenge that required creative reimagining.

To maintain this balance, we opted to leave the tub and toilet in the same location and move the shower location to the inside right corner where a corner vanity previously existed.

While not a small bathroom, it wasn't a large space either, requiring us to be very mindful of how each component would flow into the component next to it and how the space would work together as a whole.

The resulting design is a complete reimagining of the space, one that left it completely transformed from its original state with a relatively modest budget.



BEFORE AND AFTER



# FUNCTIONALITY

After a complete demo, the layout is reconfigured.

The significantly larger shower includes multiple shower shelves to accommodate use by several family members. A semi-frameless surround ensures the corner does not feel cramped.

A smaller alcove soaking tub far better suited in size for the space resides along the far wall.

An enlarged vanity now houses both sinks and provides ample storage in the center. A frameless mirror above the vanity helps open up the space by reflecting light and making the room appear larger.

Storage is further maximized with a new white linen closet situated in the corner that previously housed the shower.



# AESTHETICS

From a style perspective, the new design implements a serene, modern vibe – a picture of calm tranquility.

The combination of white cabinetry, clean white quartz countertops and Sherwin Williams Sea Salt wall color pairs classically with contemporary black fixtures and accents.

The shower walls are gleaming white subway tile, providing high contrast to the black frame. Grey penny round accent and floor tiles pair playfully with the subway tile.

The contrasting white and black balance one another, creating a timeless design.

