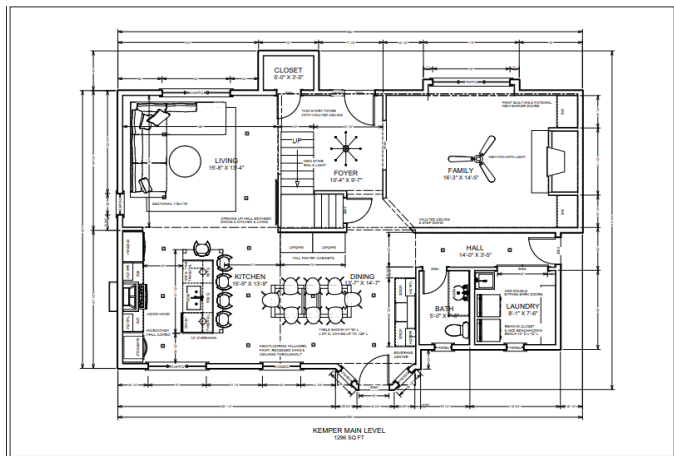


Crystal Lake Remodel

Walls came down, architects and engineers came out, we moved the kitchen into the dining room and the dining room into the kitchen... updated the stair rail, gave the fireplace a refresh and even a new front door was involved. And we couldn't be happier with the final end product. Best of all, yet again, dream clients to work with as well!

The only bummer of news was that our clients had to wait 6 + months for their appliances. The delays in the industry right now are no joke. But they are officially installed and we even spoiled them with a 5-course dinner reveal party with a few of their friends, and they invited us to join. It was a night to remember as we got to know how our clients even more and officially love these guys even more. Friends for a lifetime.

Drawings



Before

The husband of this family loves to cook and the main goal was to create a bigger kitchen + entertaining space. They didn't like how closed off all the spaces were and wanted to push the kitchen back into the dining room. The clients also must-have was to incorporate a coffee/wine bar and a large dining area that could seat at least eight people.

Where the kitchen table was, became the bar area.



Kitchen before and after



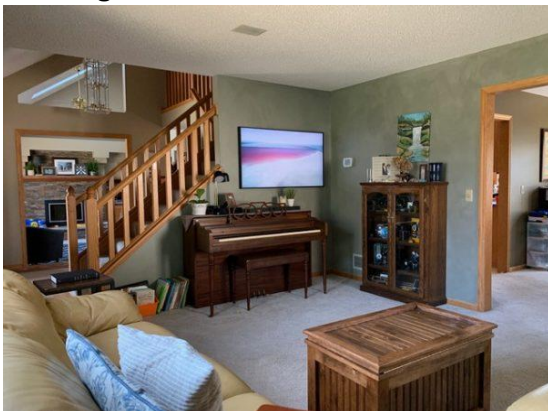
The before of where the kitchen now is....



Dining room before and after



Living room before and after



Mudroom before and after

The other area to be reimagined was the mudroom and bathroom. Here's a before of the mudroom... as you can imagine with this family of 5, they wanted more room for when they walked into the house from the garage. So these walls came down and we opened the space.

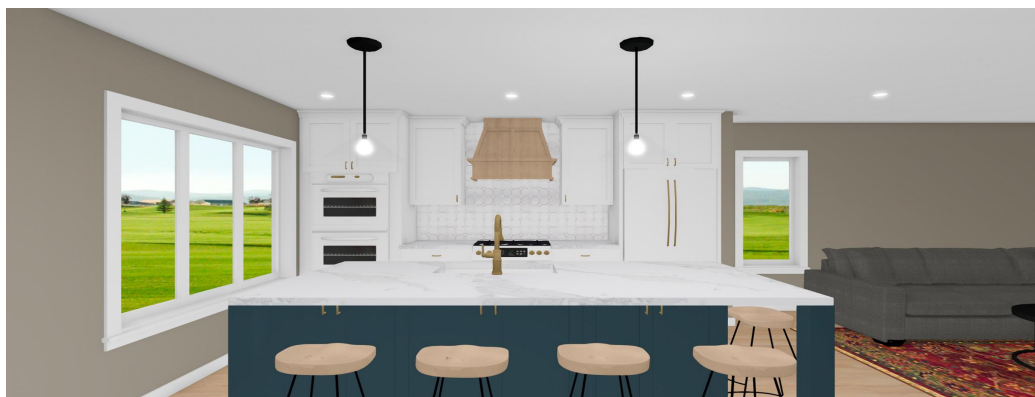
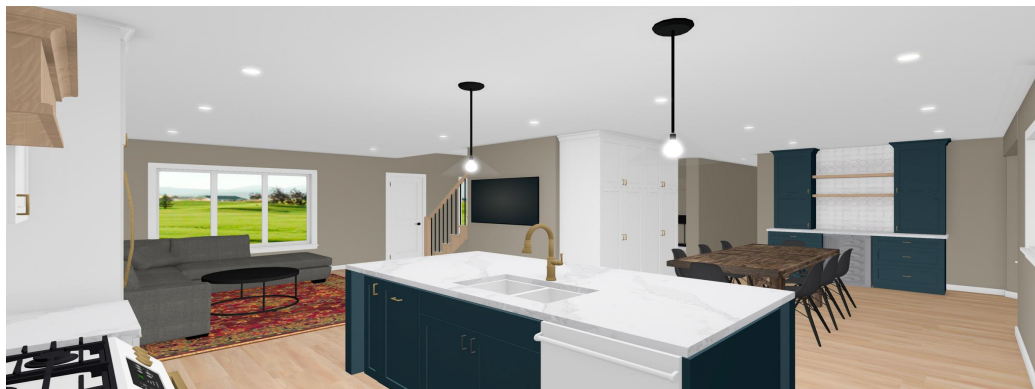


The Foyer before and after



Designs

After walking through the space and talking with the clients about their wishlist, we got to work designing their new main level. They wanted light and bright with a fun mix of colors. They were dreaming of a classic and modern vibe. Once we grasped their vision with mood boards, we got to work on selection sheets, renderings, and floor plans.



We made sure to plot out enough room for a large dining table and extra storage, and the coffee/bar station. We incorporated a fun color into the island, [Waterloo](#), to create contrast with the white countertops, backsplash, and cabinets. The gold hardware and lighting bring in a modern feel while keeping it classic. The only delays we really had to work through were materials delays and swapping out a few selections mid-project (which worked out for the better), and calling the engineer a few times a day for a couple of weeks to work through what needed to be done for all of these walls to be removed. Once we worked through those hiccups, it was smooth sailing! We love the little touches that brought this project to life. Every little detail had so much thought poured into it to make this house a forever home.