

## Kitchen Renewal

Our clients enjoyed their creekside Coon Rapids home for several years before relocating due to a career change. Loving their home and its wooded location, they chose to retain it rather than sell. It gave them a place to stay when traveling on business or visiting old friends in the area.

Over the years, several of their family members also used the home as a launchpad as they finished college, began careers and even started their own families. After so much use, it was ready for a refresh, and it was just in time for the owners to move home again.

The kitchen underwent the biggest transformation. Improved functionality and updated appearance were the motivators for remodeling, but sustainability and budget were vital considerations.

Resourcefulness began with what is usually the largest expense during a kitchen remodel: custom cabinets. Rather than install all new cabinets, the lower perimeter cabinets were in excellent condition and could be retained. They were enameled a rich taupe color and modernized with new pulls and knobs.

The granite on the perimeter was repurposed as well. It was used on the countertop as well as the “island box” – a custom box atop the new island. This box was designed to block the view of dirty dishes at the sink. It also provides useful storage for napkins, salt and pepper, etc. and serves as an electronics charging area.

As a bonus, it is the perfect height to serve as a mini buffet when eating with family at the island!

When the house was built in 1997, it had been a model home, showcasing the latest in finishes and design. Hanging from the kitchen ceiling was a large decorative element housing the lighting. It had been the height of design in 1997; in 2022, it infringed on space, blocked light and was affectionately referred to as “the coffin” by the owner. It needed to go!

After removing the low-hanging decorative fixture, the kitchen feels spacious and sight lines are unobstructed. A new island features a long continuous prep space and eating space at a more comfortable height. New upper cabinets were extended to the ceiling to maximize storage. A gray herringbone tile backsplash helps tie the granite countertops to the quartzite island. A beautiful television/display hutch replaces the old kitchen desk and is one of the new custom pieces in the kitchen.

“We sincerely appreciated working with [your team],” said the owner. “They were excellent listeners, responsive to our questions and concerns and very open to suggestions. Communication was key with the many delays and need to restrict materials. They went above and beyond! I personally think it turned out stunning.”



### Kitchen | BEFORE

When the home was built in 1997, it had been a model home, showcasing the latest in finishes and design. Our clients felt it was lacking many of the features and amenities they desired.





### Kitchen | AFTER

After an extensive whole house remodel, almost every room was touched in some way, but the kitchen underwent the biggest transformation.





### Kitchen | BEFORE

Improved functionality and updated appearance were the motivators for remodeling, but sustainability and budget were top of mind.





### Kitchen | AFTER

Rather than install all new cabinets and countertops, existing materials were repurposed. The lower perimeter cabinets were retained and enameled a rich taupe color.





### Kitchen | BEFORE

Hanging from the kitchen ceiling was a large decorative element housing the lighting. It infringed on space, blocked light and was referred to as “the coffin” by the owner. It needed to go!





### Kitchen | AFTER

After remodeling, the kitchen feels spacious and sight lines are unobstructed.





### Kitchen | BEFORE

The island wasn't wide enough to be practical for food prep or informal dining.





### Kitchen | AFTER

A new island features a long continuous prep space and eating space at a more comfortable height.





### Kitchen | BEFORE

Dark woodwork and older finishes dated the home.





### Kitchen | AFTER

Remodeling freshened the space and made the home feel brighter.





### Kitchen | BEFORE

Prior to remodeling, upper cabinets didn't maximize available space.





### **Kitchen | AFTER**

New upper cabinets were extended to the ceiling. The existing granite countertops were in excellent condition and could be repurposed rather than replaced.





### Kitchen | BEFORE

The existing island was too narrow to use when eating with family.





### Kitchen | AFTER

The new, wider island includes an “island box” that serves as a mini buffet. This custom box offers storage and was designed to block the view of dirty dishes at the sink.





### Kitchen | BEFORE

The existing kitchen desk was rarely used.





### Kitchen | AFTER

A beautiful television/display hutch is one of the new custom pieces in the kitchen.





### Kitchen | BEFORE

With the remodel, an emphasis was placed on function, cohesive details and resourceful design.





### Kitchen | AFTER

The result is a more functional floor plan with features and amenities customized for our clients.





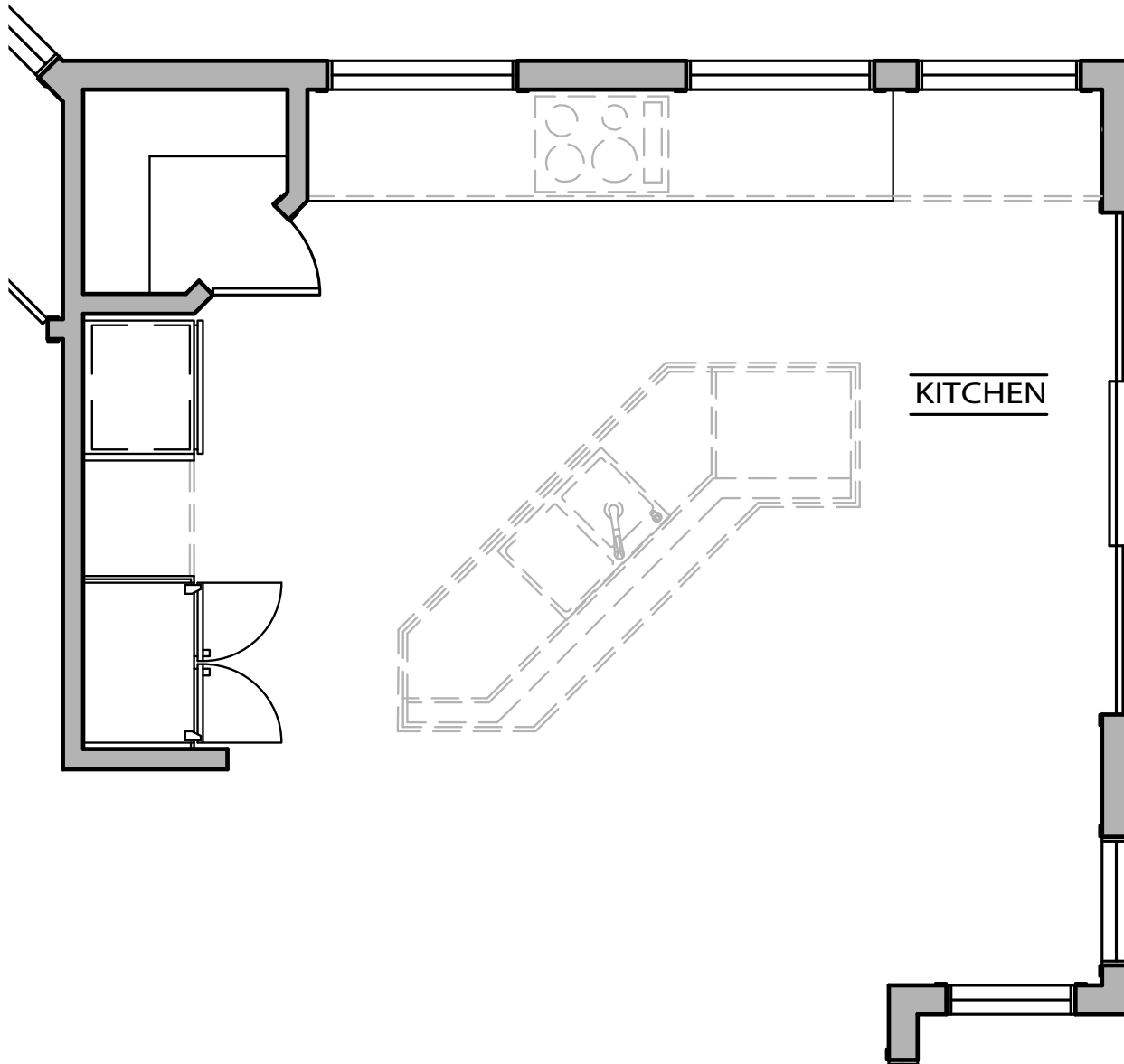
Kitchen  
BEFORE | DURING | AFTER





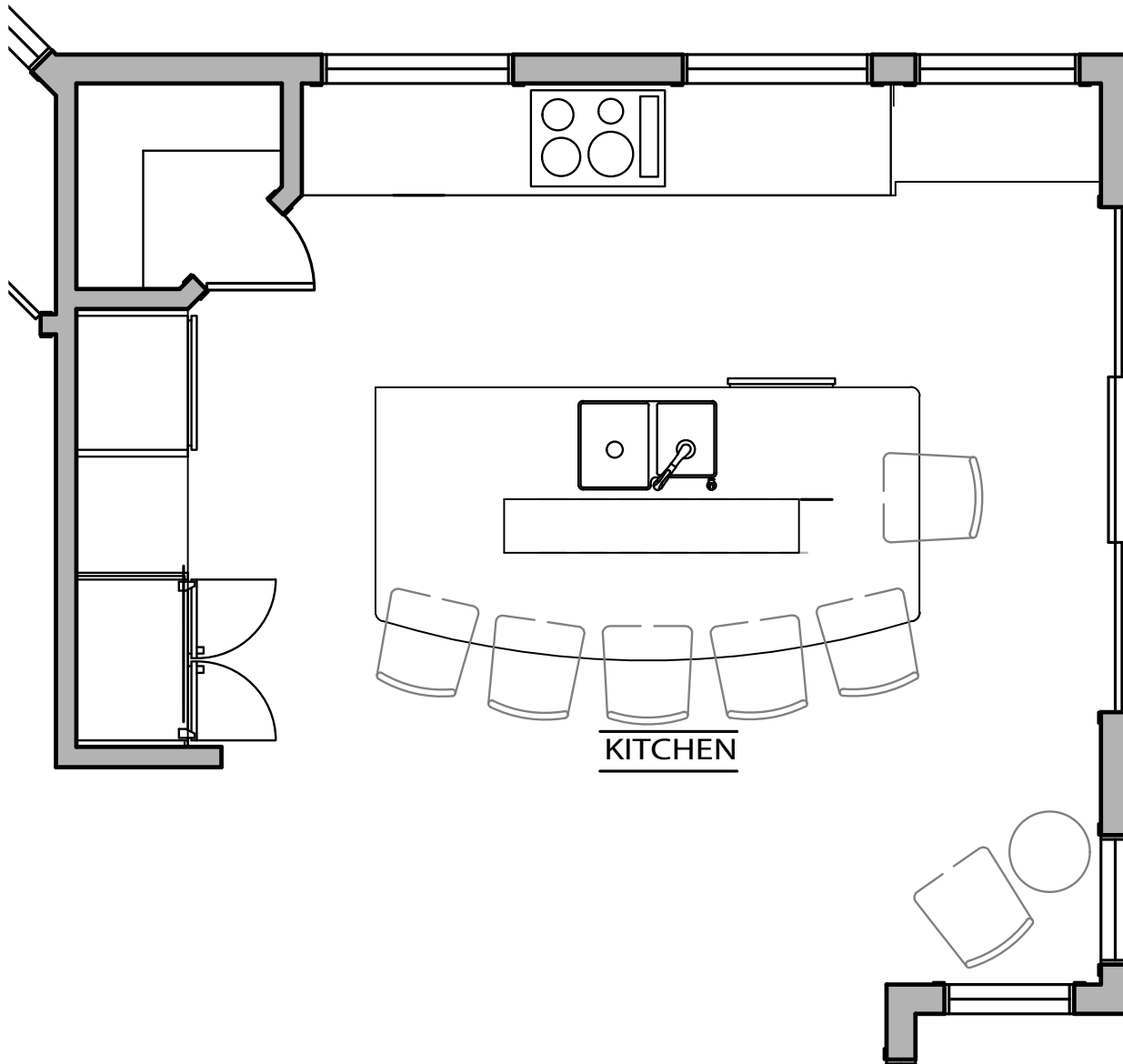
**Expert Craftsmanship**





Floor Plan | BEFORE





Floor Plan | AFTER