

# NARI MINNESOTA- COTY AWARDS

PROJECT: Saint Paul Kitchen

CATEGORY: #2- Residential Kitchen

The homeowner loves her quaint home and loves to entertain, but the kitchen space was not adequate with its previous layout. She was looking for help from us to come up with a design to maximize storage space without disrupting the original building envelope. She wanted more counter space for food preparation and for additional seating. She wanted a bright and airy feel to make the kitchen appear larger and more open. With an upgrade to new appliances, cabinets, countertops, lighting, flooring, and paint color we achieved all those in this amazing kitchen remodel.

## CLIENT NEEDS:

- More efficient storage
- Additional seating area
- Updated appliances
- Entertaining space
- New flooring
- More counter space, no clutter



SAINT PAUL KITCHEN- COTY AWARDS- RESIDENTIAL KITCHEN



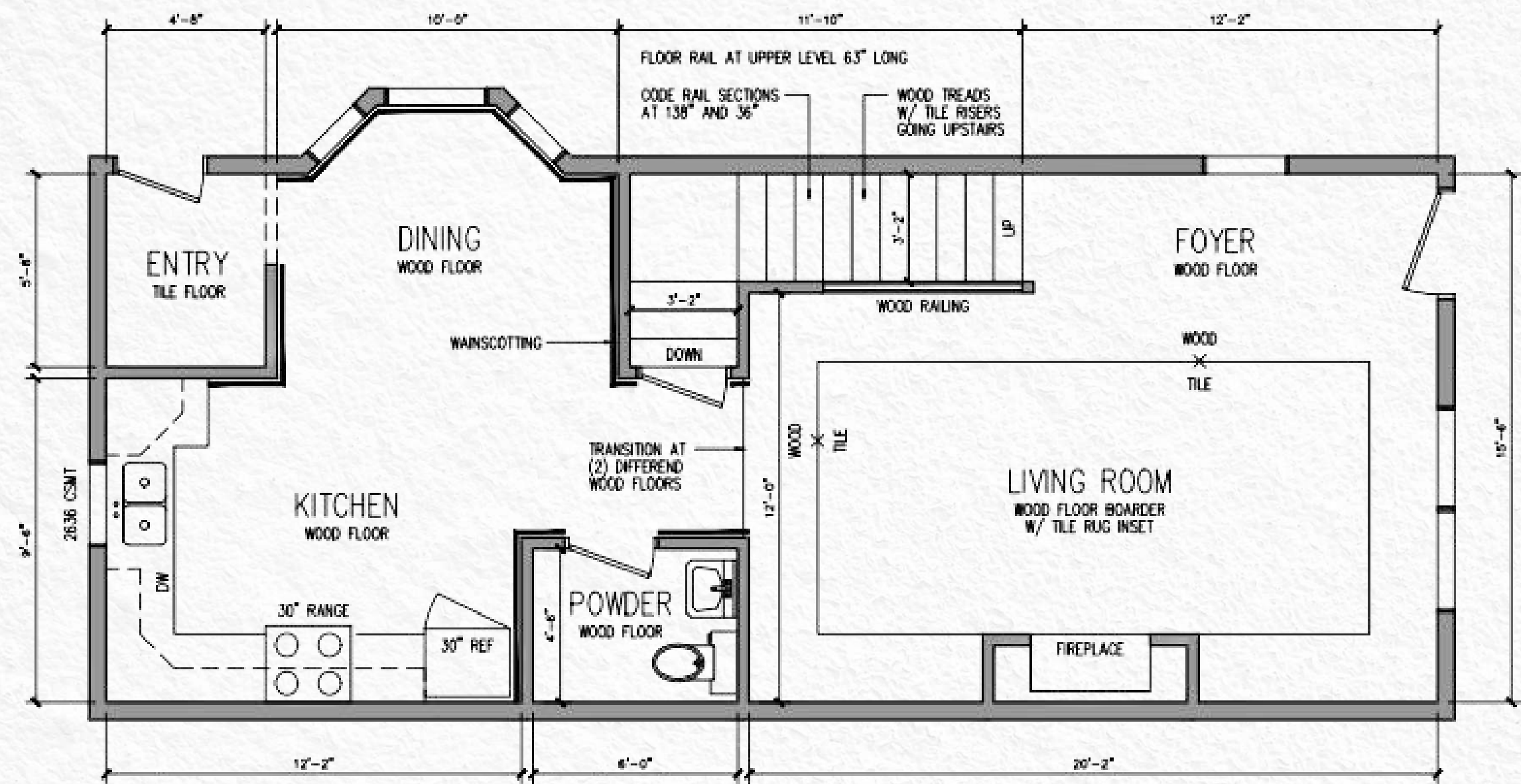
BEFORE  
PHOTOS



SAINT PAUL KITCHEN- COTY AWARDS- RESIDENTIAL KITCHEN



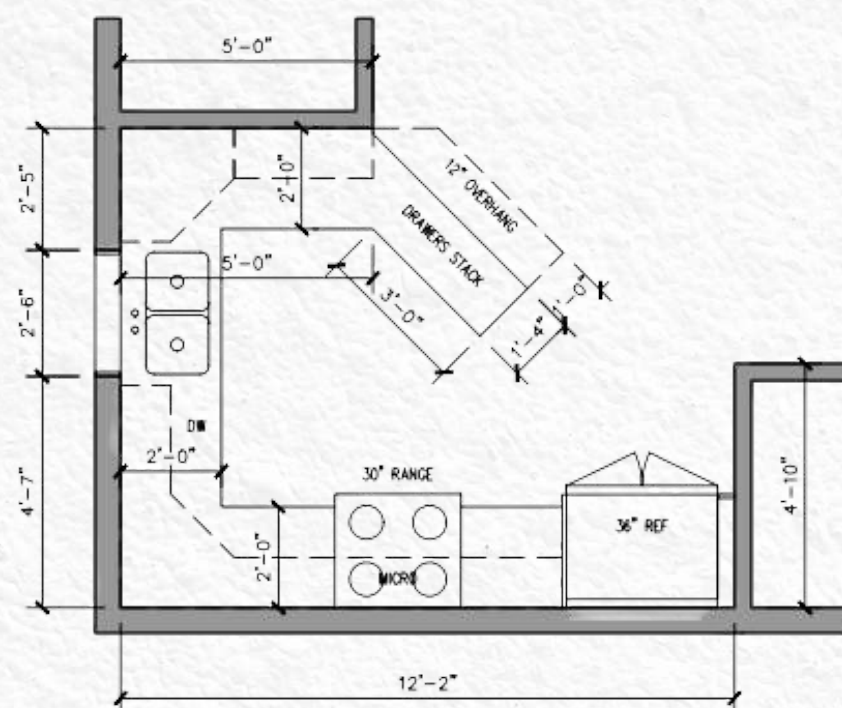
# BEFORE FLOOR PLAN



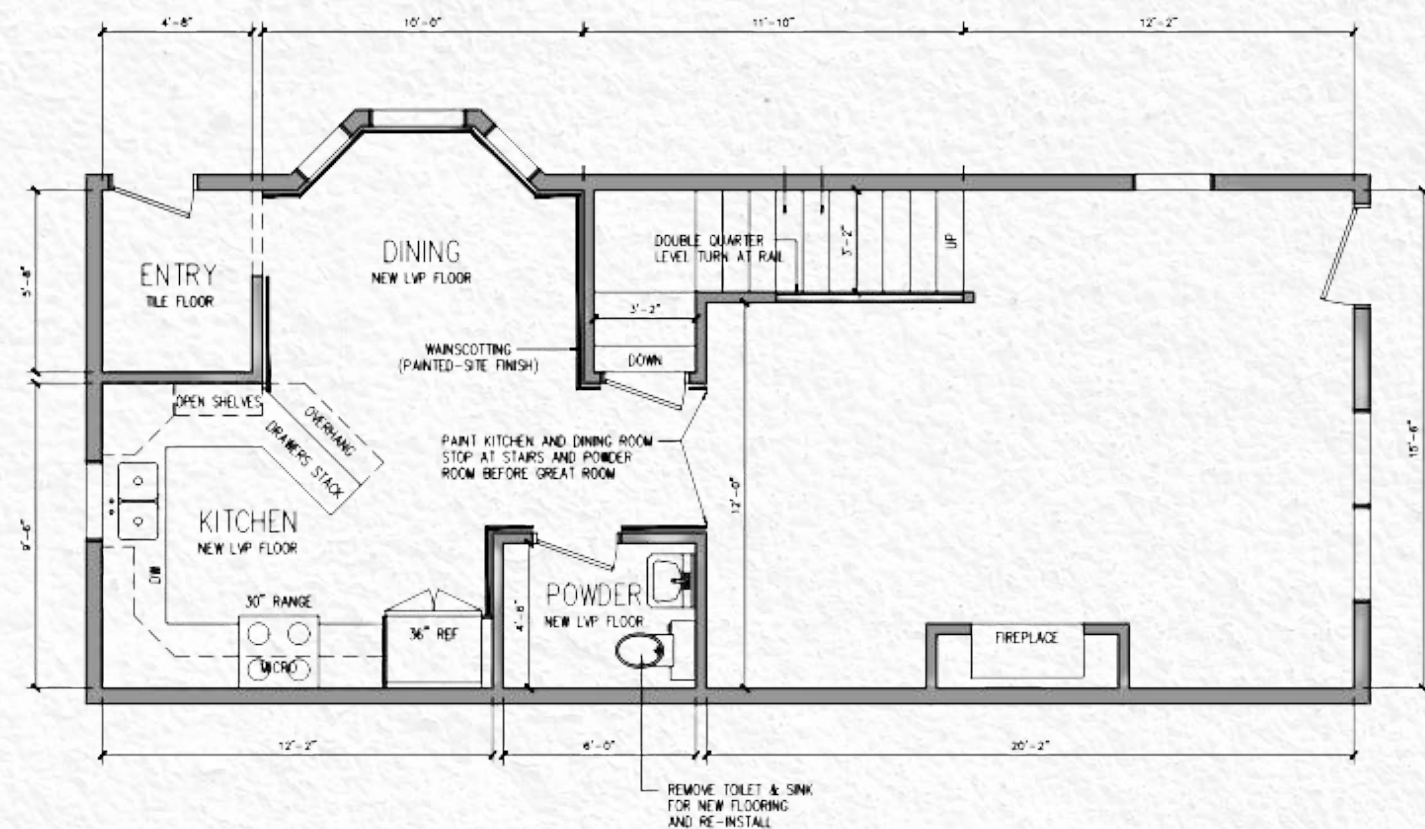
1  
A-1  
EXISTIN PLAN  
SCALE: 1/4" = 1'-0"



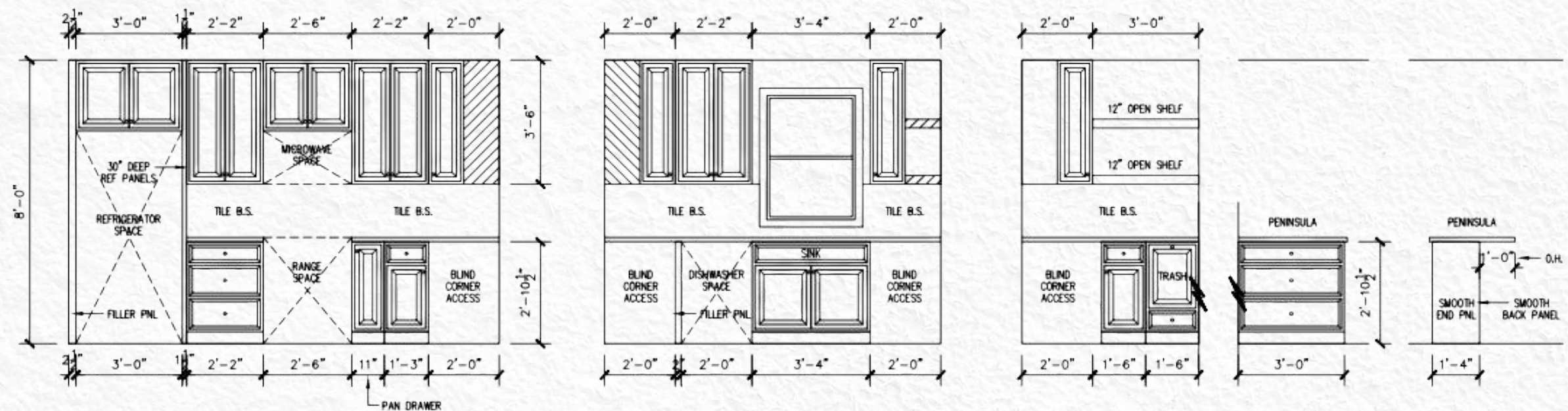
# AFTER FLOOR PLAN



3  
A-1 REMODEL KITCHEN LAYOUT  
SCALE: 1/4" = 1'-0"



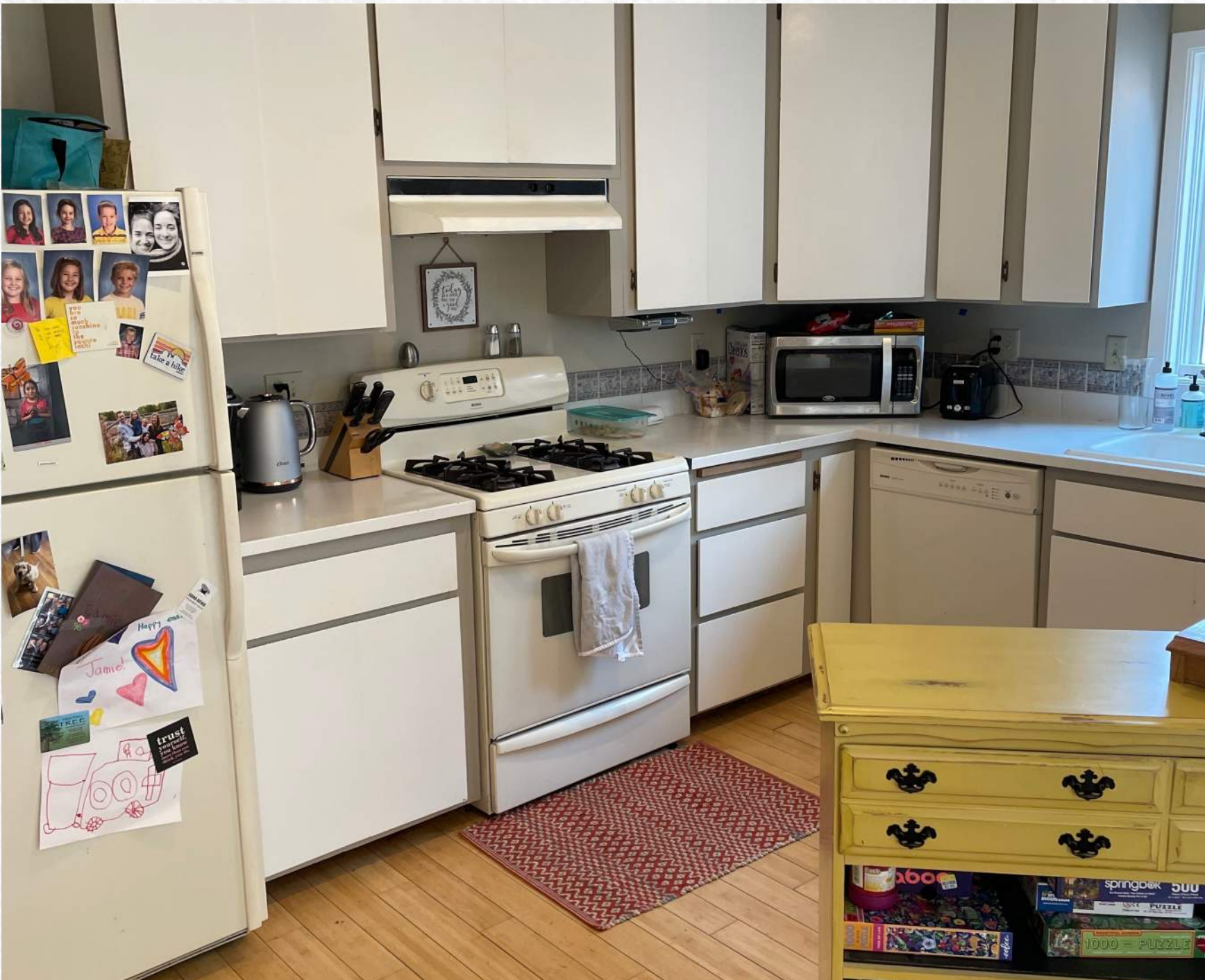
2  
A-1 REMODEL PLAN  
SCALE: 1/4" = 1'-0"



4  
A-1 KITCHEN REMODEL ELEVATIONS  
SCALE: 1/4" = 1'-0"



# BEFORE AND AFTER



SAINT PAUL KITCHEN- COTY AWARDS- RESIDENTIAL KITCHEN



# BEFORE AND AFTER



SAINT PAUL KITCHEN- COTY AWARDS- RESIDENTIAL KITCHEN



# FUNCTIONALITY

- Floating walnut wood shelves for additional dish storage
- Added peninsula for additional seating and entertaining
- Angled peninsula which allows for a more interactive kitchen/social area
- Larger sink size to accommodate easier clean up
- Upper cabinets to the ceiling for additional storage



SAINT PAUL KITCHEN- COTY AWARDS- RESIDENTIAL KITCHEN



# ASTHETICS

- Two-tone backsplash to add an element of dimension to the wall
- Accent SW Coastal Plains on lower cabinets to add a pop of color
- Brushed gold hardware to match Pfister brushed gold faucet
- White under-mount double sink
- Stained walnut floating shelves for a more modern look
- Wide plank LVP flooring
- LED disc lights to compliment the open feel of the kitchen space





# CRAFTSMANSHIP/ INNOVATIVE METHODS & USES

- Full custom cabinetry designed to maximize small kitchen square footage
- Quartz countertop to add an element of lightness to the space
- Rollout cabinet shelves for easy access in hard to reach corner cabinets



## PROJECT CHALLENGES

- To design a kitchen with a functional layout
- Maintaining the original size of space while constructing the design
- Prepping floor area to remove multiple areas of old hardwood and linoleum
- Space constraints of being in a St Paul neighborhood which had limited parking options. Trades had to carpool to site to consolidate parking
- The city did not allow for a waste container or portable toilet for construction workers. Trades remove debris daily and dispose off site
- Maintaining a livable area for the homeowner during construction using polywall and zipper door system to create a confined work area



# CONSTRUCTION PHOTOS



SAINT PAUL KITCHEN- COTY AWARDS- RESIDENTIAL KITCHEN