

# NARI MINNESOTA - 2023 CoTY AWARDS

**PROJECT:** KOSELIG    **CATEGORY:** RESIDENTIAL KITCHEN \$50,000-100,000

Now empty nesters, the homeowners came to us ready to embark on a long-awaited remodel of their dark 1950s Bloomington kitchen featuring original cabinetry, an adjacent too-small dining area and an underutilized front room of their home.

Typical of the time, the tight floorplan with multiple openings required creativity when rethinking how to best utilize the space. The new layout throws conventionality out the window. A wall separating the original living area and kitchen is now halved and finished with a peninsula island with seating, opening up the main floor to light and possibility. With the dining room now residing at the front of the house, the newly expanded kitchen is the epitome of casual warmth, featuring Benjamin Moore’s Swiss Coffee on the top cabinetry and Gallery Buff on the lower cabinetry. Topped by grey veined honed granite countertops, additional accents are found in the antique pewter hardware, white subway tile backsplash, glass inset cabinet doors and midcentury-inspired black pendant lighting with wood accents.

Reclaimed wood shelves effortlessly tie together the new kitchen space and the warm wood tones from an existing four-season addition and casework. A pass-through window and other thoughtful design decisions including an added pantry space and the reconfiguration of appliance locations complete the transformation.

Together, a reimagining that delivers a simple warmth fed by that first sip of coffee, conversations with friends and the taste of a good meal.





**BEFORE PHOTOS**

Clockwise, starting in upper left corner.

- 1) Existing kitchen, view from the interior wall
- 2) Existing kitchen, view from eat-in area
- 3) Sink and corner cabinetry
- 4) Sliding glass door into four-season addition
- 5) Interior wall of existing kitchen



**CLIENT REQUESTS**

- Bring kitchen up to date while making it mesh with style of home and neighborhood
- More cabinets and storage
- More worksurfaces, current layout had minimal open countertop space
- Open kitchen to front of the home. Current layout was closed off and front half of home was underutilized
- Maximize seating, ensuring that it incorporated the kitchen and the front dining room together
- Homeowner wanted the new kitchen to feel warm and cozy. It was also important that the design feel cohesive with the wood found in the four season and throughout out home



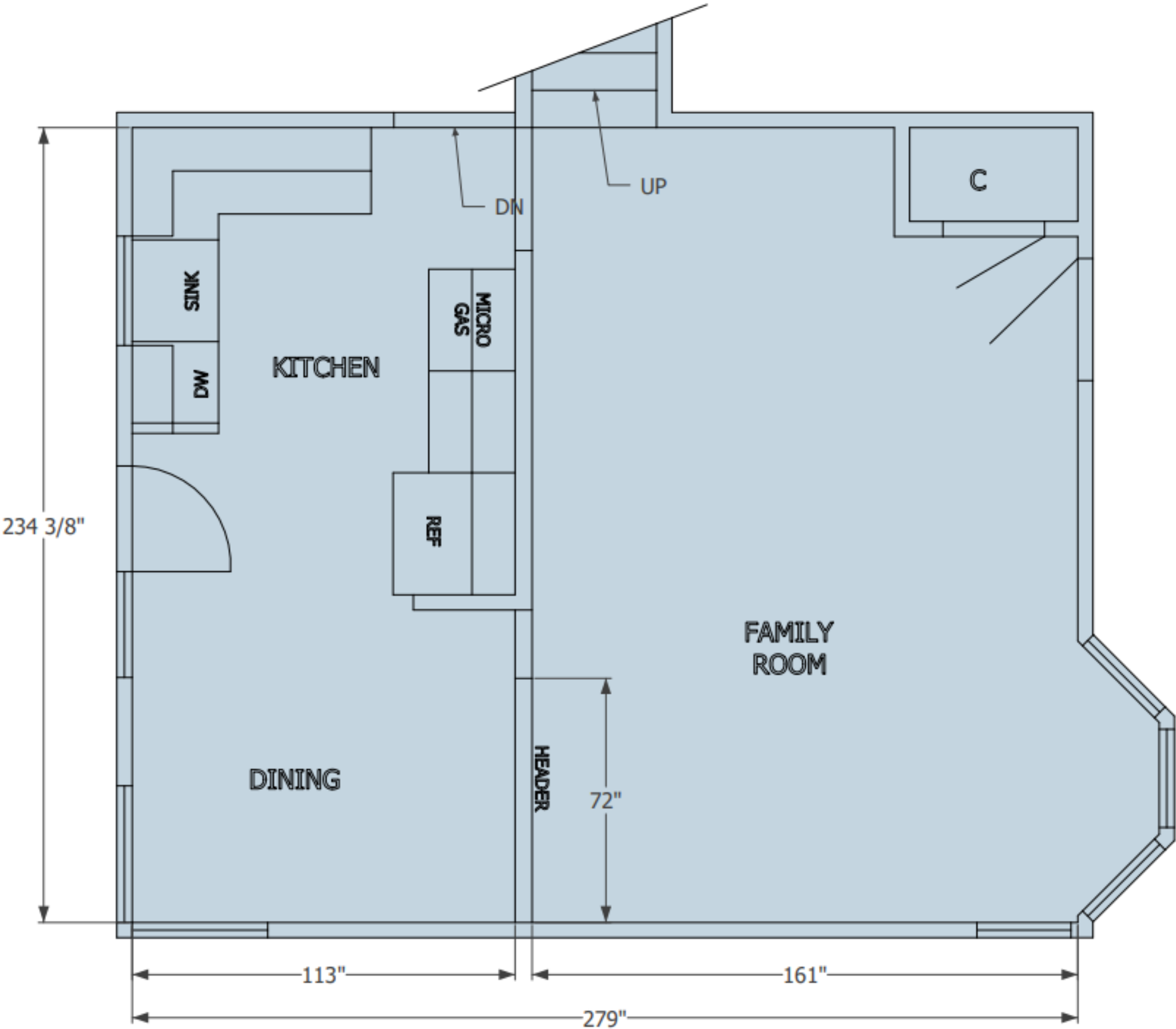
BEFORE SITE PLAN

Current kitchen was very small with minimal cabinetry and workspace.

Numerous transitions and doorways including a sliding glass door into a four-season addition made the space as a whole feel disjointed and cramped.

An awkward window on the interior wall by the eat-in area had been left when the addition was added looking awkward and ill-placed

Meanwhile, the family room, cut off from the rest of the main level sat mainly unused.



# AFTER SITE PLAN & LAYOUT CHALLENGES

## Connecting the Front and Rear of the Home

The wall separating the kitchen and living room was a load-bearing wall, which meant we couldn't remove the dividing wall. Instead, we chose to shorten the wall and finish it with a new peninsula island with seating. This allowed us to deliver on our client's request to open up the space to the front half of the home while leaving the load-bearing wall in place.

## Better Transitions to the Addition

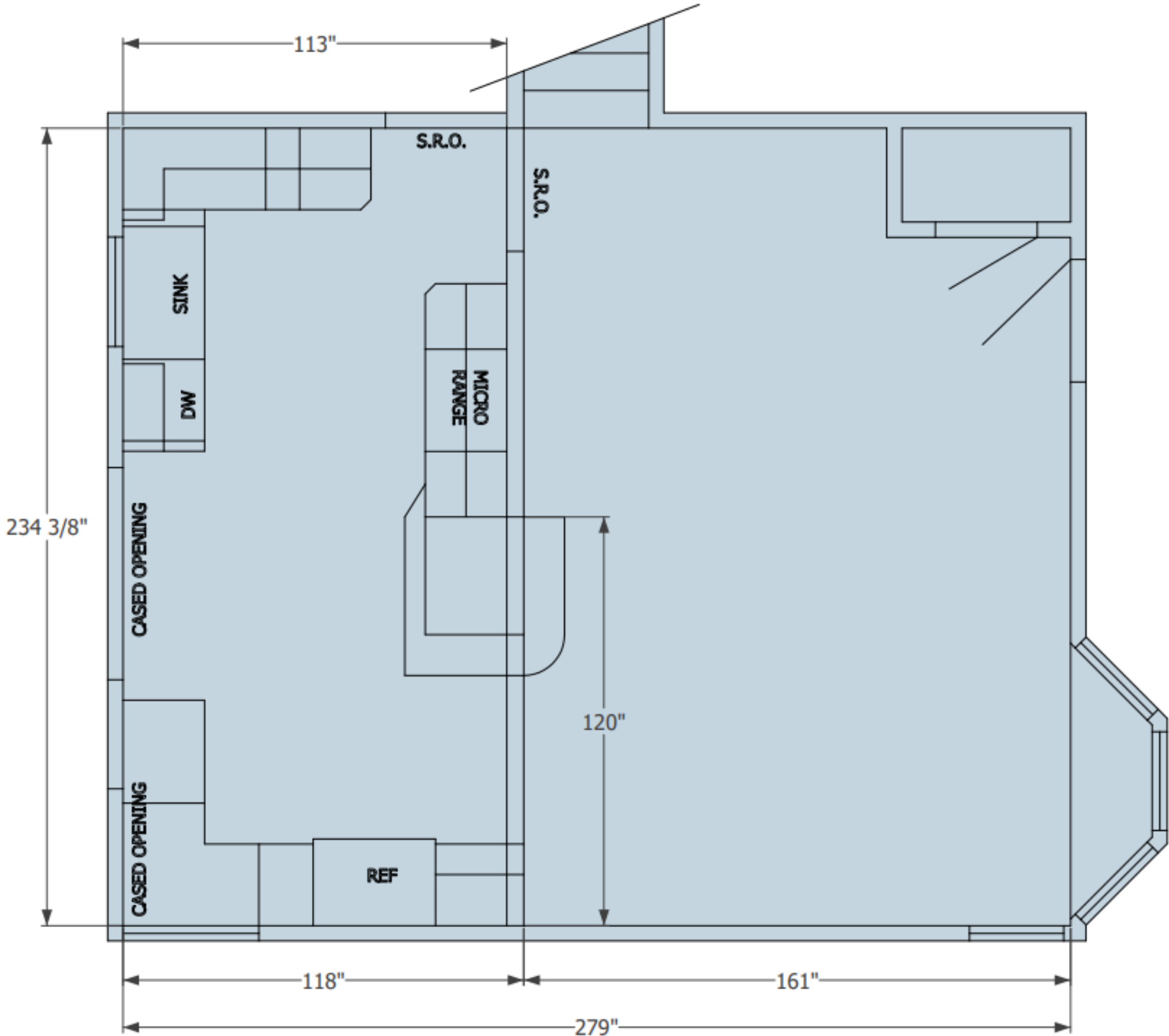
Both the sliding door and the window dividing the addition with the main area had to go. We landed on designing an open doorway into the addition. As the homeowner entertained often, we chose to remove the window but leave the opening as a pass-through area.

## Shifting of Appliances

The addition of the peninsula meant the fridge needed to move. Putting it within the traditional kitchen triangle along the north wall would have meant it was far away from the breakfast area. Instead, we opted for the new location shown here which is conveniently located next to the breakfast area and new dining room.

## Tricky Corners and Numerous Transition Areas

A tight floorplan involving tricky corners and numerous transitions further reinforced our decision to go with a slightly less traditional layout.





BEFORE AND AFTER





**FUNCTIONALITY**

A wall separating the original living area and kitchen is now halved and finished with a peninsula island with seating, opening up the main floor to light and possibility.

The dining room now resides at the front of the house which allowed the kitchen to expand the rear length of the home. Because of the peninsula, the entire main floor feels less isolated.

The fridge now resides on the exterior wall, next to pantry space and additional cabinetry and counterspace.

The new cased openings provide an unhindered transition between the main area of the home and the addition. This change alone made both spaces feel more open, allowing light to spill in from the addition into the kitchen.

An overhang on the countertops along two sides of the peninsula allows for breakfast seating without disrupting the flow of traffic between the kitchen and dining room.





# AESTHETICS

The newly expanded kitchen is the epitome of casual warmth.

Cabinetry, featuring Benjamin Moore’s Swiss Coffee on the top cabinetry and Gallery Buff on the lower cabinetry, grounds the design while grey veined honed granite countertops add the perfect amount of drama.

Additional accents found in the antique pewter hardware, white subway tile backsplash, glass inset cabinet doors and midcentury-inspired black pendant lighting with wood accents come together to infuse the design with personality that feels both interesting and understated all at once.



Reclaimed wood shelves and casework around the openings into the addition effortlessly tie together the new kitchen space with the warm wood in the addition.

New LVP flooring throughout reinforces the cohesive feel of the remodeled main floor.

Together, the reimagining of this space fills the space with light and warmth, perfect for that first sip of coffee, conversations with friends and the taste of a good meal.