

A photograph of a modern white brick cottage with a dark grey shingled roof. The house features multiple gables, large multi-paned windows with black frames, and a central entrance with a small overhang. To the right is a two-car garage with light-colored wooden doors. The house is illuminated by warm interior and exterior lighting, set against a dramatic sunset sky with orange and blue clouds. A curved concrete driveway leads to the garage, and the front yard is green with some small shrubs and a large rock. The text "Modern Cottage" is overlaid in the center in a white serif font.

Modern Cottage

1
4
8
1
2



Home exterior renovations are a great way to bring new life to an outdated home. These homeowners moved to this property from across the lake with the intention of remodeling to make it their own.

The challenge of this home remodel was matching the brick style while accommodating the addition of new windows and tying new rooflines into the existing structure. No floor, wall, ceiling, or exterior components remained untouched.

Our talented masons were able to seamlessly blend new brick and limestone in with the existing materials. A team of engineers, designers, project managers, site supervisors, and carpenters all worked together to plan and execute the cutting of a large gable vault through the center of the roof assembly.

When it came time to install the chimney shroud, we were faced with another large challenge. The sod in the yard was installed earlier than originally planned so we were unable to drive a crane on it for fear of damaging the yard. With the ground level option out of the picture, we took to the sky and finished the job with a helicopter placing the chimney shroud in its resting position.





There were significant structural changes made including cutting window wells into block, floor assembly changes, removing masonry chimneys from interior footings through the roof, changing nearly every opening in the house, and a significant overhaul of the roof assembly creating bearing changes down to the foundation.

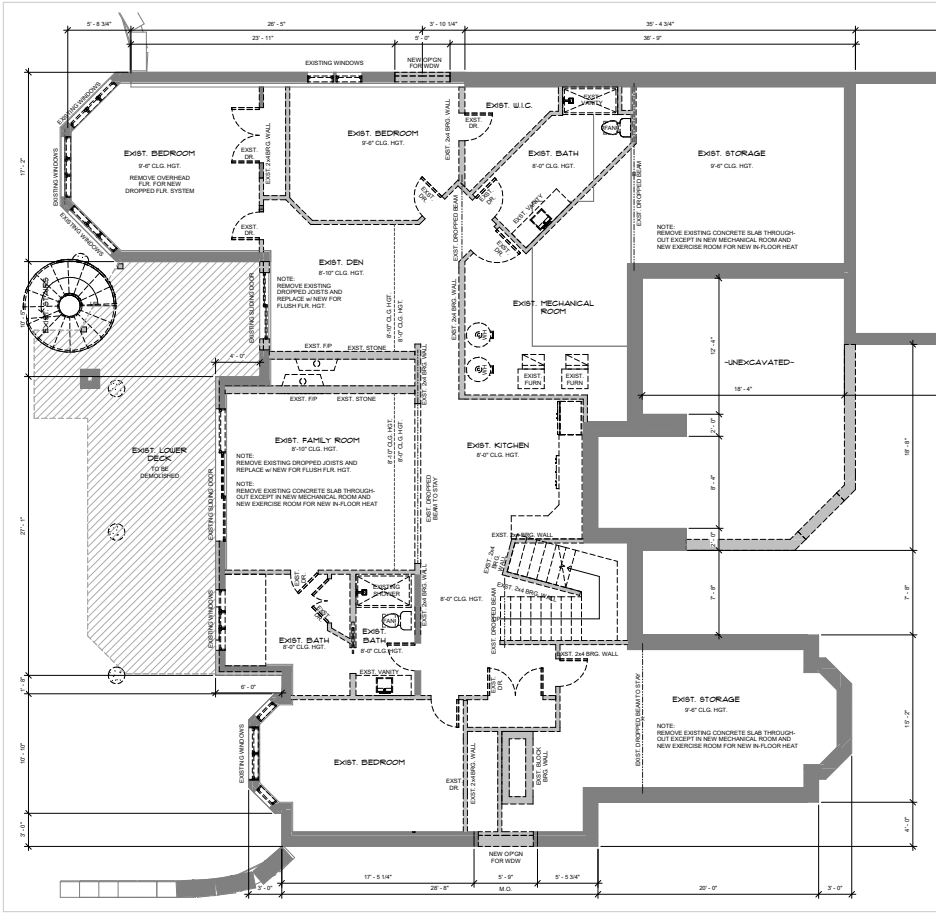
The porch assembly was a major structural change that took ample design and planning. The clients wanted this space to withstand all of Minnesota's seasons. We managed water intrusion with pre-sloped EPDM rubber and a central drain. To retain heat in cold winter temperatures, a hydronic heated tile floor and fireplace were also included.



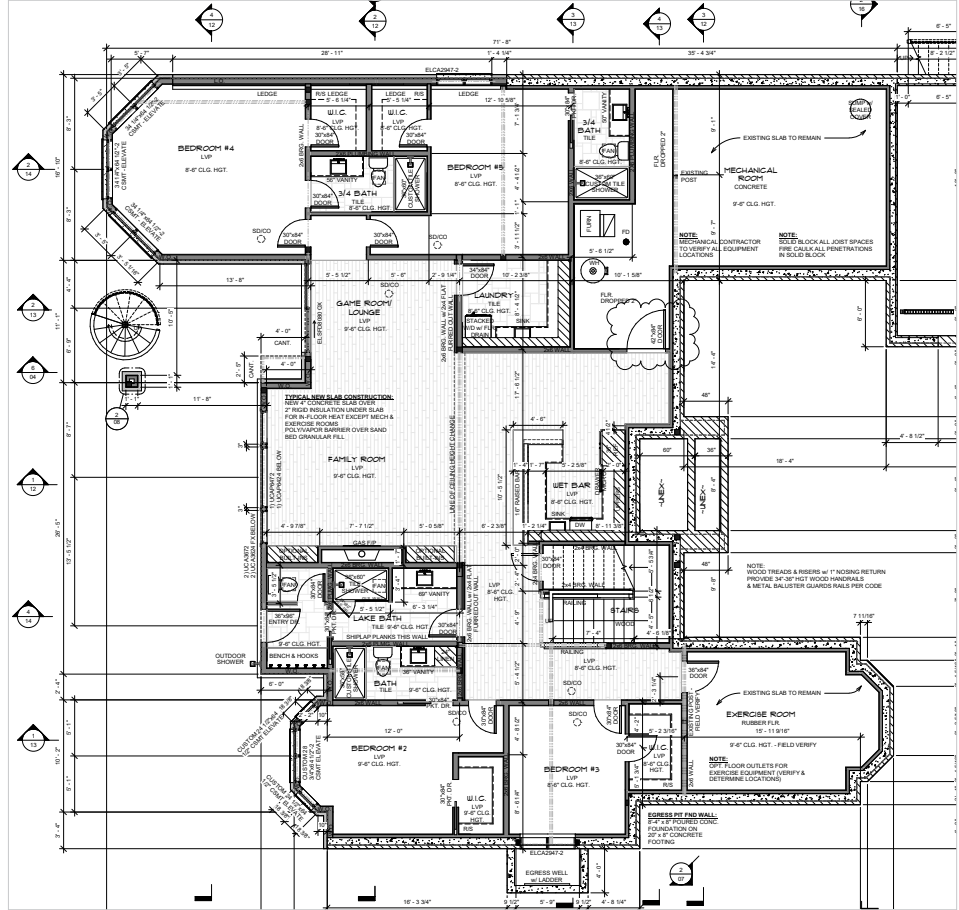
Aside from structural updates, the visual redesign of this home was important to the homeowners. They wanted to transform the 90s era build and update it with modern day style.

Some notable design details include new gable rooflines, custom cedar garage doors, and Marvin windows with a custom grid pattern. The entryway also features gas lanterns to give an inviting feel with natural stone pavers welcoming guests to the front stoop. The lake facing side of the home includes modern board & batten accents.

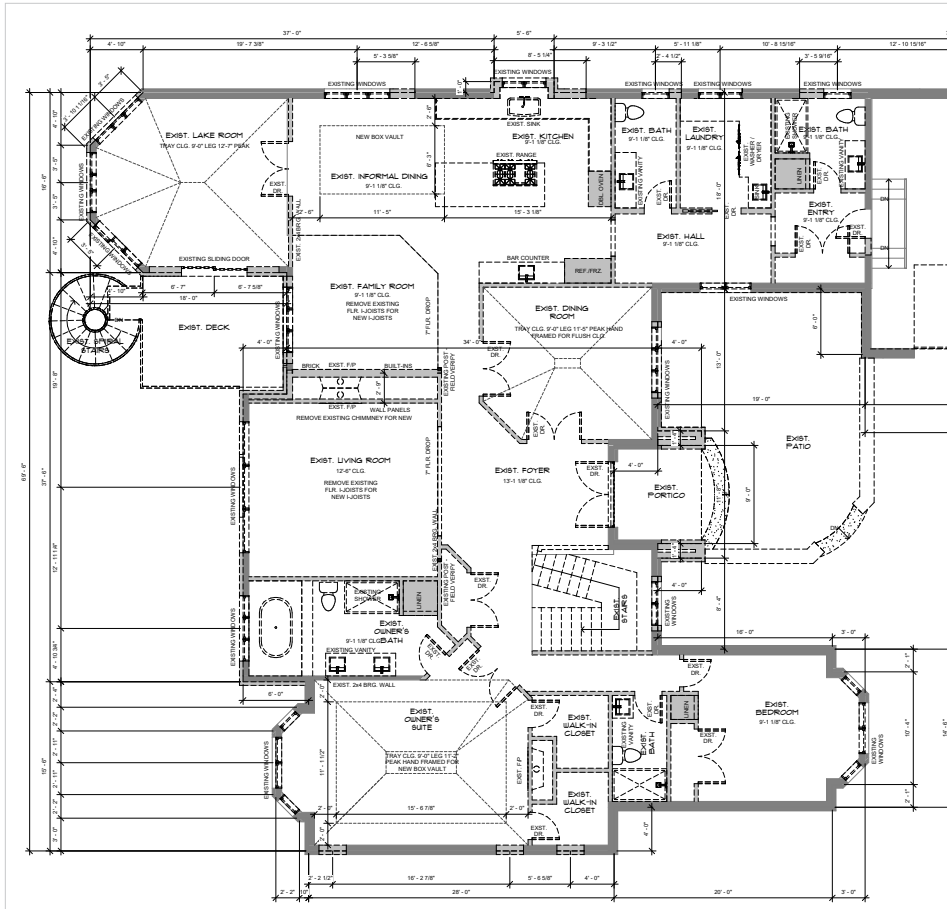
Before



After



Before



After

