

NARI MINNESOTA - 2023 COTY AWARDS

PROJECT: GAME CHANGER CATEGORY: BASEMENT \$100K - \$250K

This game-centric Lake Elmo lower-level gem will turn sports fans green with envy and make guests of all ages ask to stay longer!

The project started as a half-finished basement with a few pieces of exercise equipment and a projector for watching movies. The homeowners' goal was to create a fully functioning usable space for their family and friends to not only enjoy movies, but to watch all sporting events in style and comfort.

An impressive floor-to-ceiling viewing wall, complete with not one, but five TVs, holds center court. An 85” showstopper mounted on rich espresso-hued cabinetry is flanked by four smaller units, all of which can be synced or programmed individually to show multiple games at one time.

A fireplace on the lower third of the TV wall vents out the top of the wall, bringing the heat away from the TVs to avoid damage to the units.

On the opposite end of the room from the TV wall sits a well-appointed wet bar. It confirms that this isn't an ordinary basement setting!

A game room off of the main family room offers up arcade games, a basketball game, and a throw-back pinball machine, while the original exercise equipment now has a finished home with rubber flooring and mirrors.

What began as a non-descript half-finished basement, ends as a terrific entertainment playground for this sports-loving family.



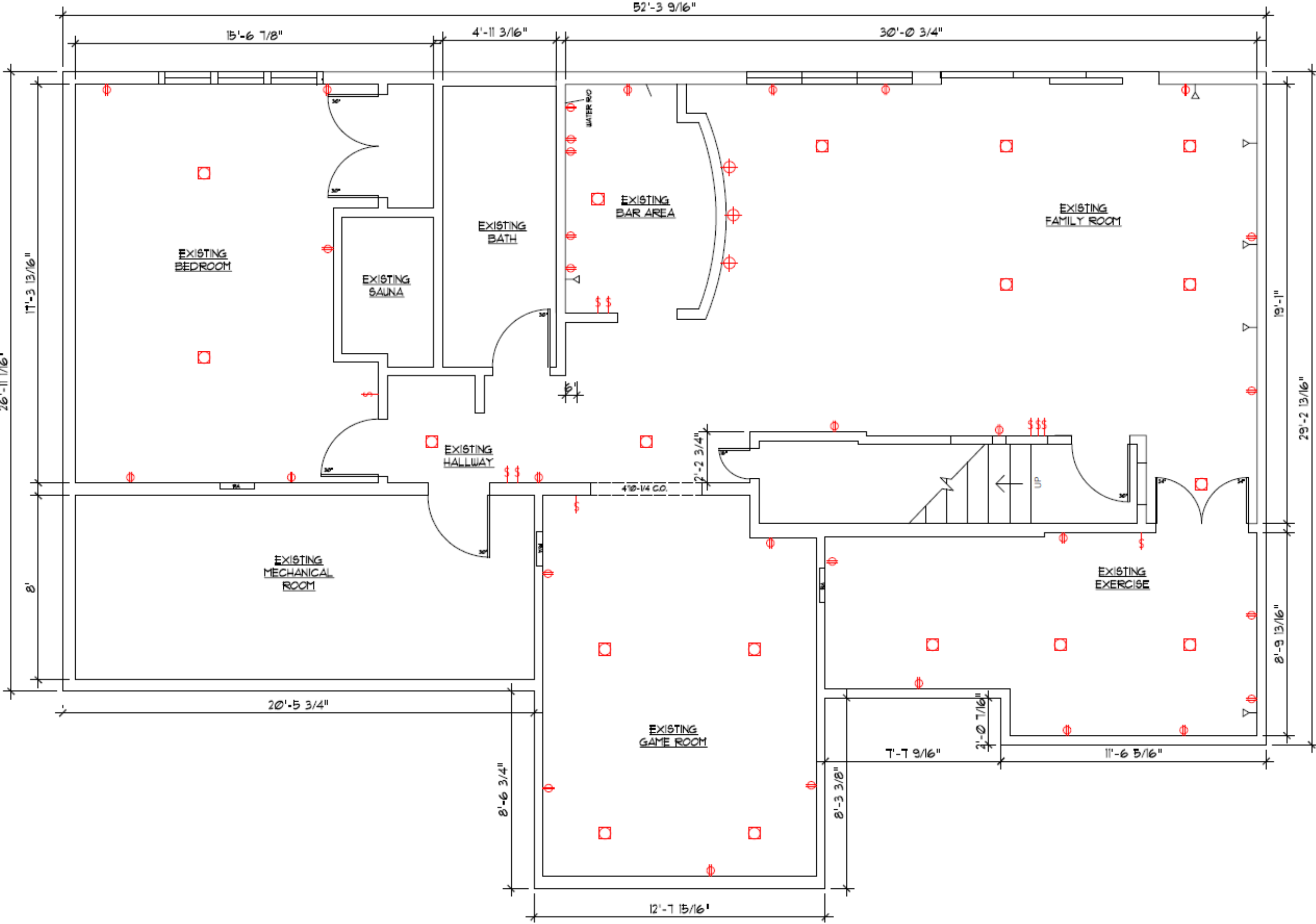
BEFORE PHOTOS



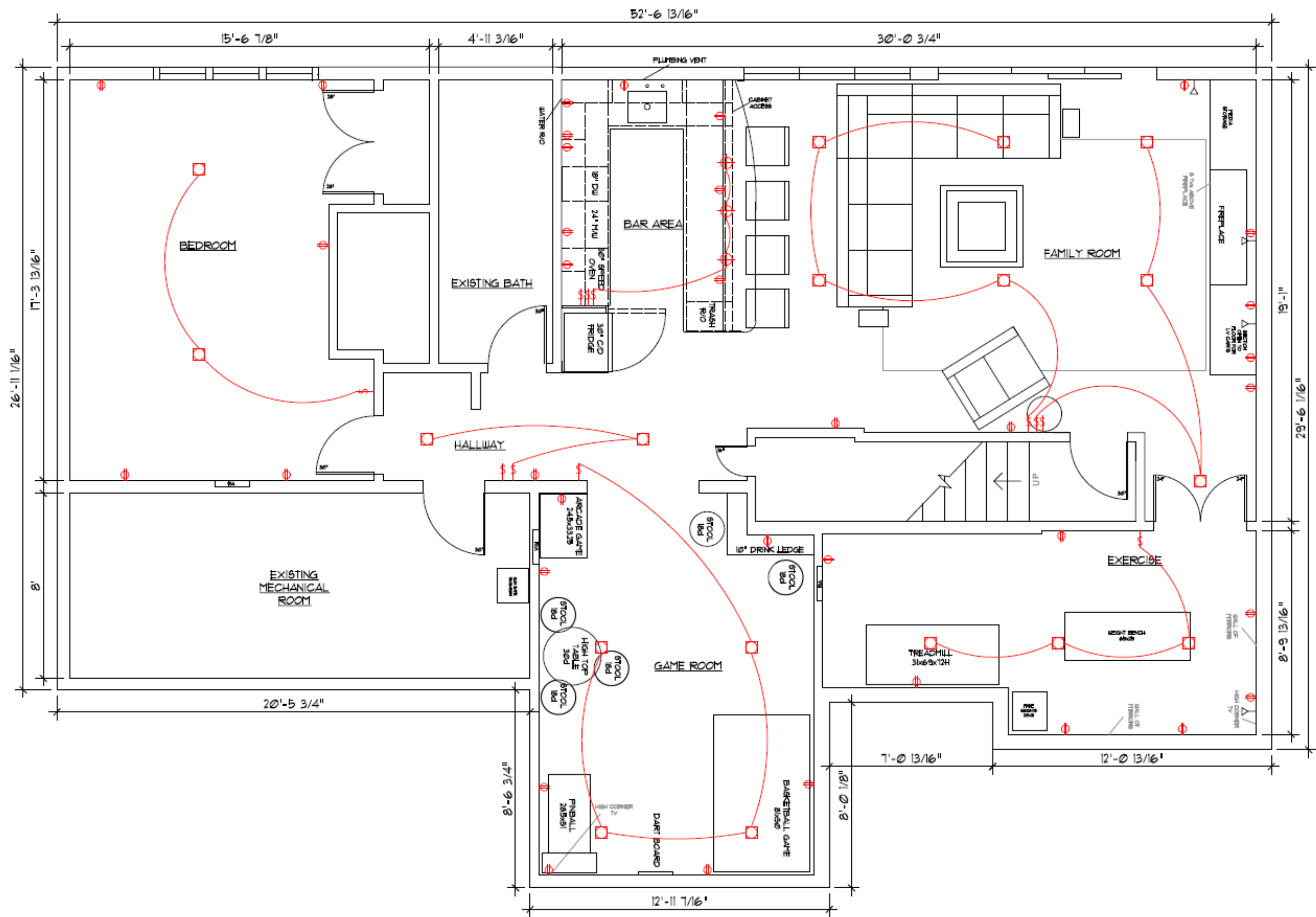
GAME CHANGER - BASEMENT \$100 - \$250K - 2023 NARI MN COTY

CLIENT REQUESTS AND BEFORE SITE PLAN

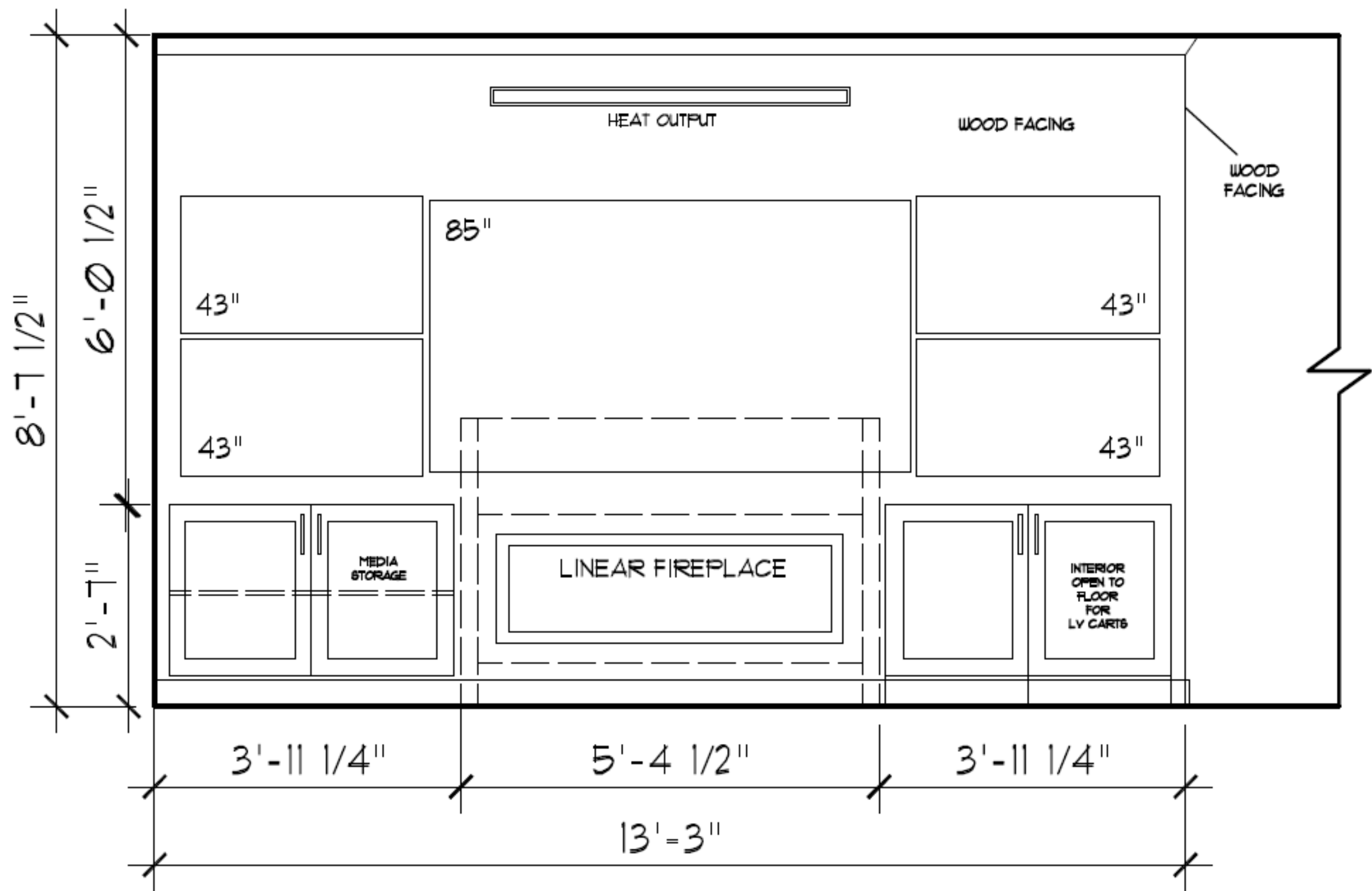
- The homeowner's request was to create a fully functioning usable space for their family and friends to not only enjoy movies, but to watch all sporting events in style and comfort.
- Anchor the space with an enormous wall of TVs.
- Provide comfortable seating areas to accommodate family and friends.
- Include a luxurious wet-bar with full-size fridge and pizza oven.
- Incorporate a game room for the young and young at heart.
- Provide a proper home for homeowner's exercise equipment.



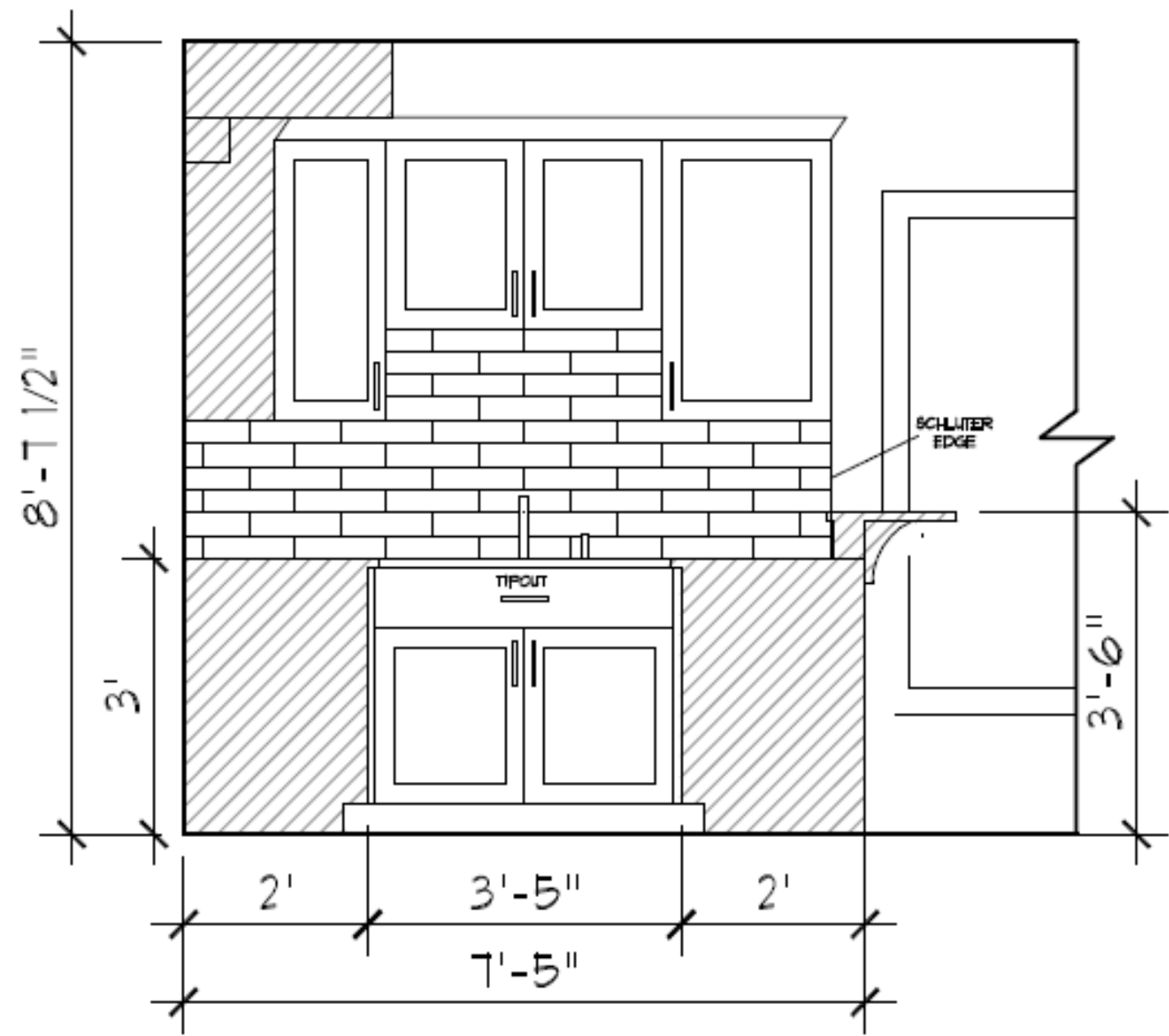
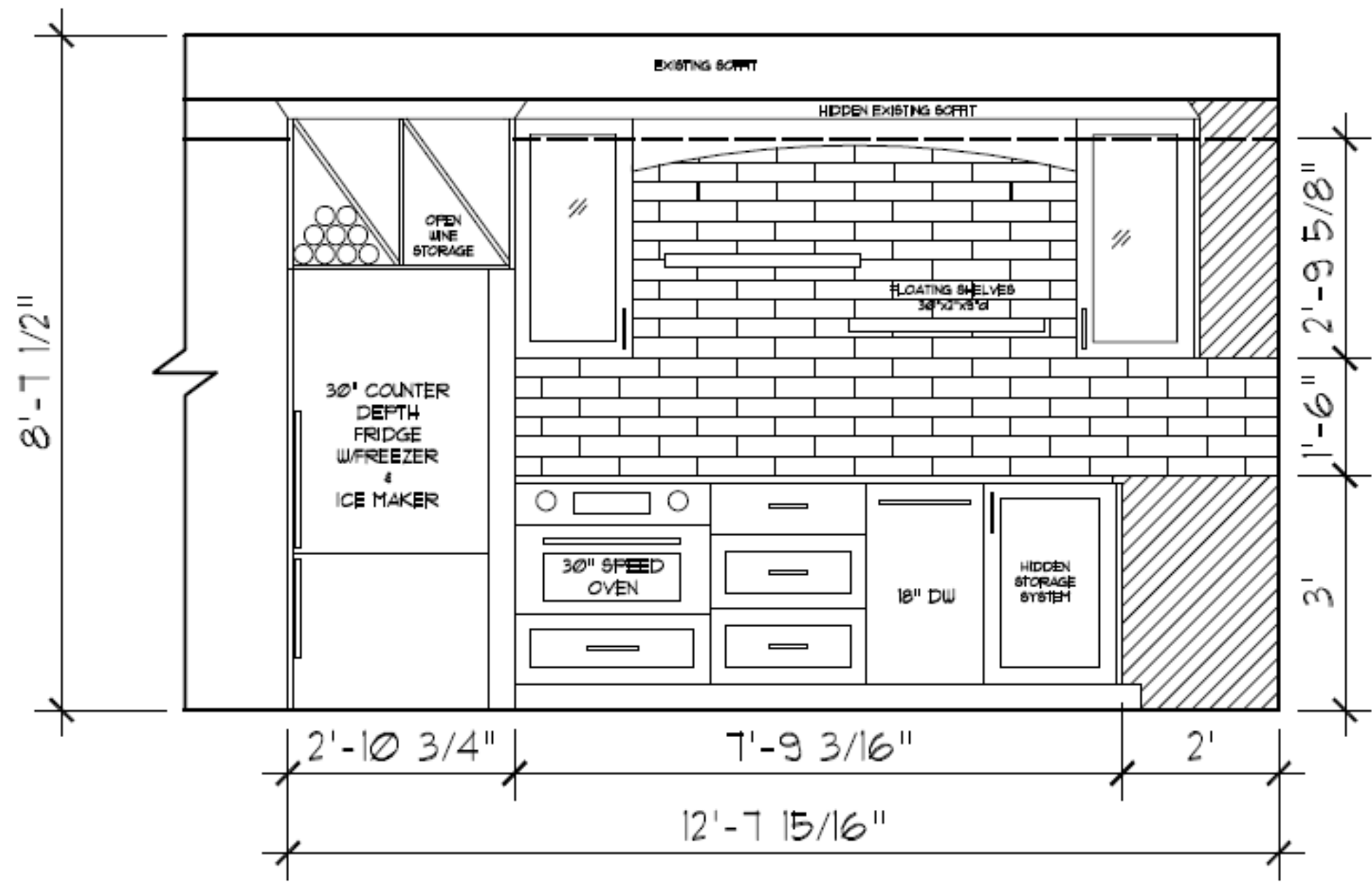
AFTER SITE PLAN



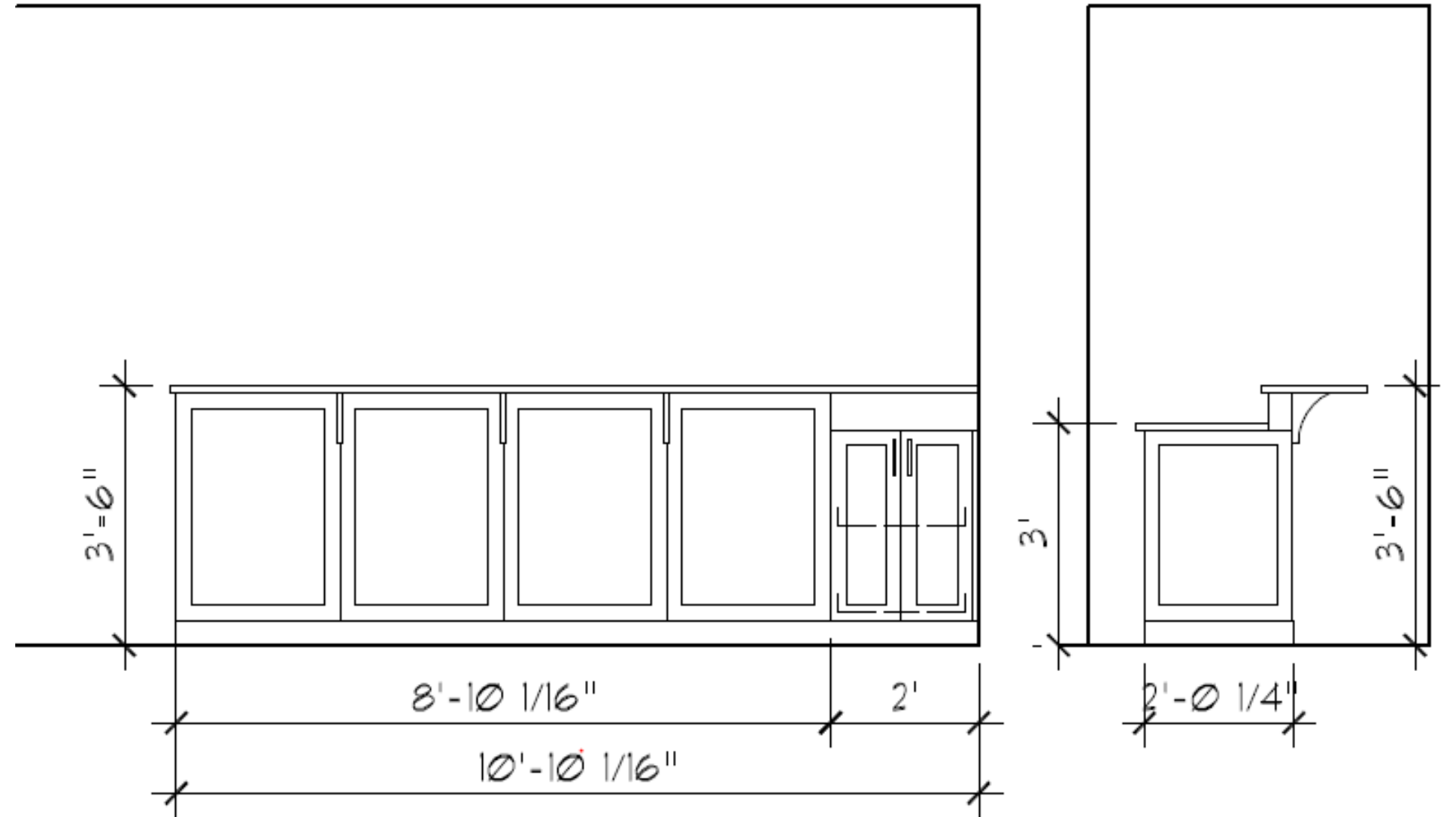
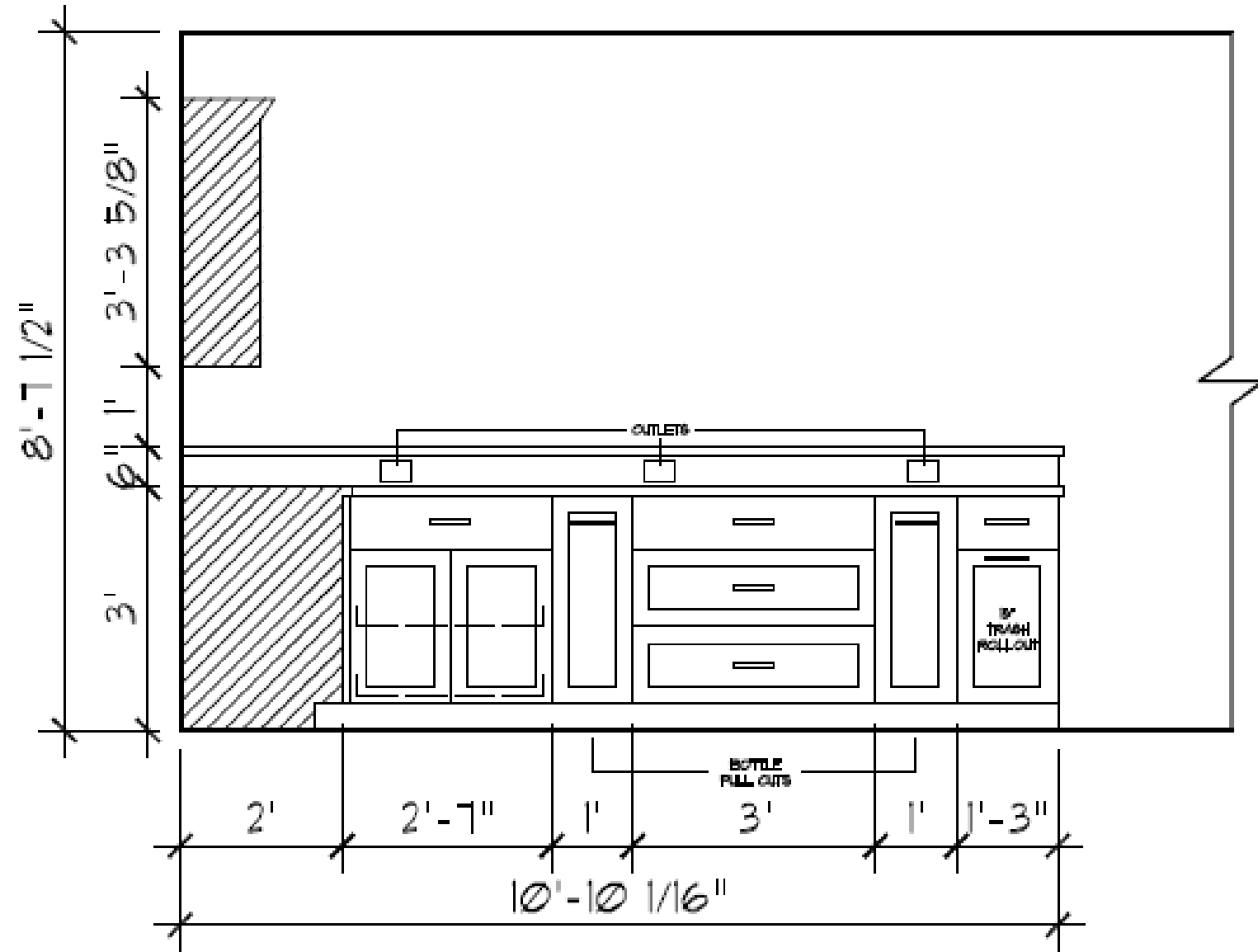
ELEVATION DETAILS - TV WALL



ELEVATION DETAILS - WET BAR



ELEVATION DETAILS - WET BAR



BEFORE AND AFTER



GAME CHANGER - BASEMENT \$100 - \$250K - 2023 NARI MN COTY

BEFORE AND AFTER



GAME CHANGER - BASEMENT \$100 - \$250K - 2023 NARI MN COTY

PROJECT CHALLENGES

Fireplace - Heat Output

A fireplace on the lower third of the TV wall was a mid-project request from the homeowners. It created significant challenges to implement. The primary concern was how to include a fireplace on the wall without damaging the TVs.

The solution was a fireplace model that could vent out the top of the wall bringing the heat away from the TVs. In the end, it increased the the literal and figurative feeling of warmth in the room.

High-tech Needs

A significant challenge with the project was how to marry the high tech needs of the project with high style wants of the homeowners.

The design team worked with a low-voltage smart home technology coordinator to create a vision to mesh with the electronic needs of the project.

Wet Bar

The countertop at the end of bar presented another challenge in the project. The profile was shaped to fit against the window casing while still providing ample countertop space.



FUNCTIONALITY - FLOOR-TO-CEILING TV VIEWING WALL

- The impressive TV Wall includes five TVs - an 85” unit, flanked by four smaller units, all of which can be synced or programmed individually to show multiple games or programs at one time.
- In all, there are eight video sources that can play on any of the five TVs in any combination. A video matrix is included so that the homeowner can watch multiple games or programs at one time.
- The built-in cabinetry that houses the TVs takes up the majority of the wall and is custom built to house the TVs and the necessary wiring and operating system. It houses all pieces attractively without sacrificing the look in the name of utility.
- A linear fireplace resides in the bottom third of the TV wall providing warmth and ambiance. It vents out the top of the wall bringing the heat away from the TVs so as not to damage the units.



FUNCTIONALITY

Family Room

-An oversized sectional and rich leather armchair provide ample seating and are oriented toward the TV wall and fireplace.

-Exterior wall is covered in operating windows and patio doors bringing incredible natural light into the space.

-Durable LVP flooring is underfoot throughout the entire lower level – an ideal match for a basement setting.



Full Wet Bar

-A well-appointed wet bar complete with full-sized fridge and pizza oven sits opposite the TV Wall.

Game Room

-A game room off of the family room offers up arcade games, a basketball game, and a throw-back pinball machine.

-A bar-height table provides a resting place for a drink when the competition heats up.



AESTHETICS

-Floor-to-ceiling rich espresso-hued built-in cabinetry houses the TV units and fireplace. It contains all electronics attractively without sacrificing the look in the name of utility.

-A long linear fireplace resides in the TV wall unit.

-The wet bar features light toned heavily veined granite countertops and a textured white porcelain tile backsplash surrounded by dark stained cabinetry and floating shelves.

-White leather bar stools are the seating of choice at the wet bar, while gray toned high-backed stools flank the table in the game room.

-Sitting atop the mid-toned LVP flooring is a taupe oversized sectional and rich leather armchair which provide ample seating and soften the lines in the room.

