

A photograph of a modern wooden sauna. The interior is constructed from light-colored wood slats. On the left, there is a glass door with a brass-colored handle. Inside, there are wooden benches. A small wooden bucket with a ladle sits on one of the benches. A shower head is visible on the ceiling. The lighting is warm and ambient.

NARI MINNESOTA

2023 AWARDS

RESIDENTIAL INTERIOR FEATURE



# BEHIND THE REMODEL

Our esteemed clients had a vision of converting their recently completed basement into a serene and lavish spa. Our adept design team and extensive online research aided the homeowner in discovering multiple options for shower-sauna combinations they wished to integrate into their project. Using the traditional heated rock method to create steam and real cedar wood finish makes this space an authentic old-world experience in a modern setting.

NARI

RESIDENTIAL INTERIOR FEATURE

NARI COTY AWARDS

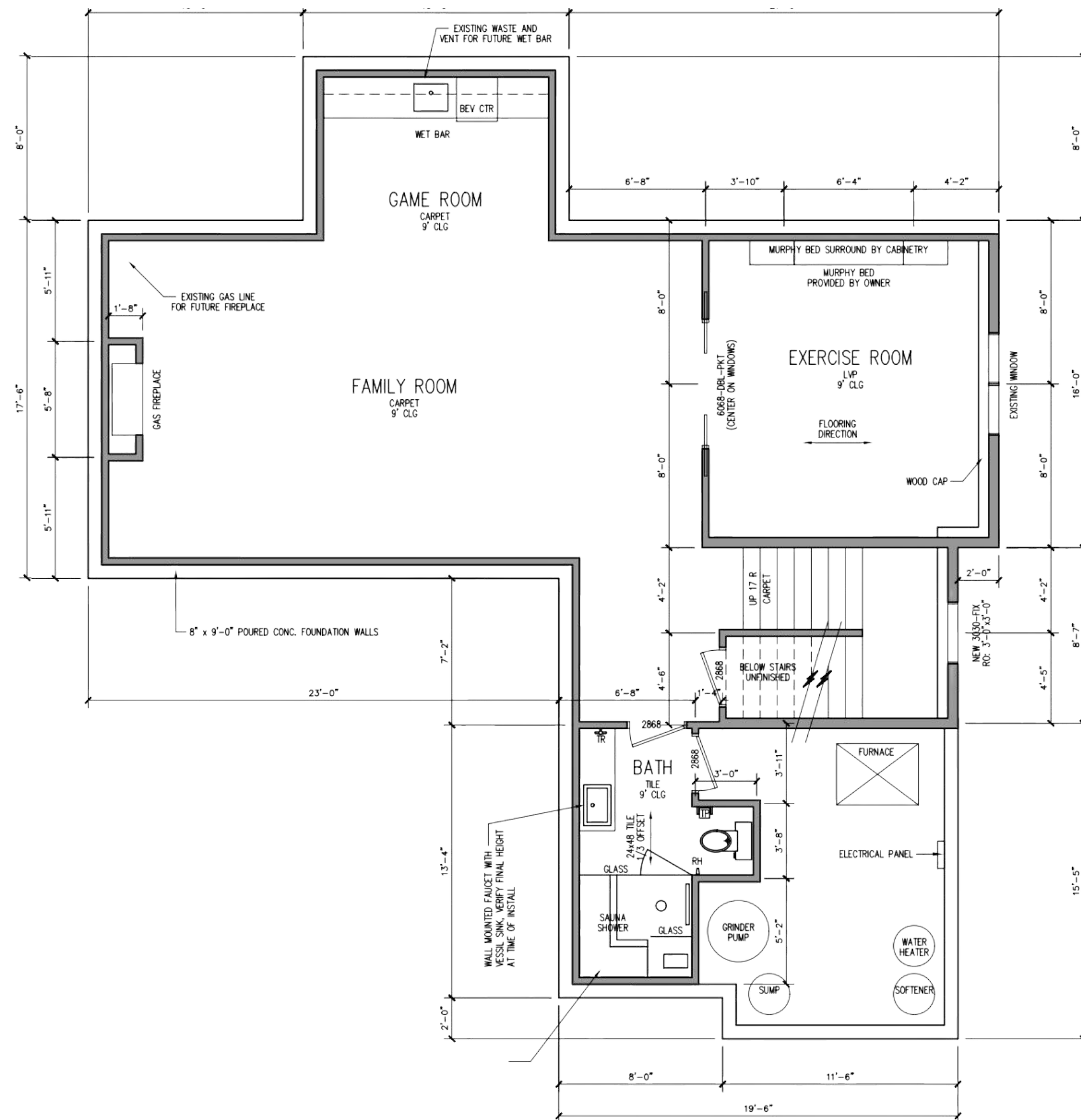






## MEETING CLIENT NEEDS

- Cedar-finished sauna with clear glass shower door/wall
- Aesthetically pleasing rock basket in the sauna
- Custom LED-colored mood lighting
- Rainhead shower
- Linear floor drain
- Combination of wall finishes both tile and cedar

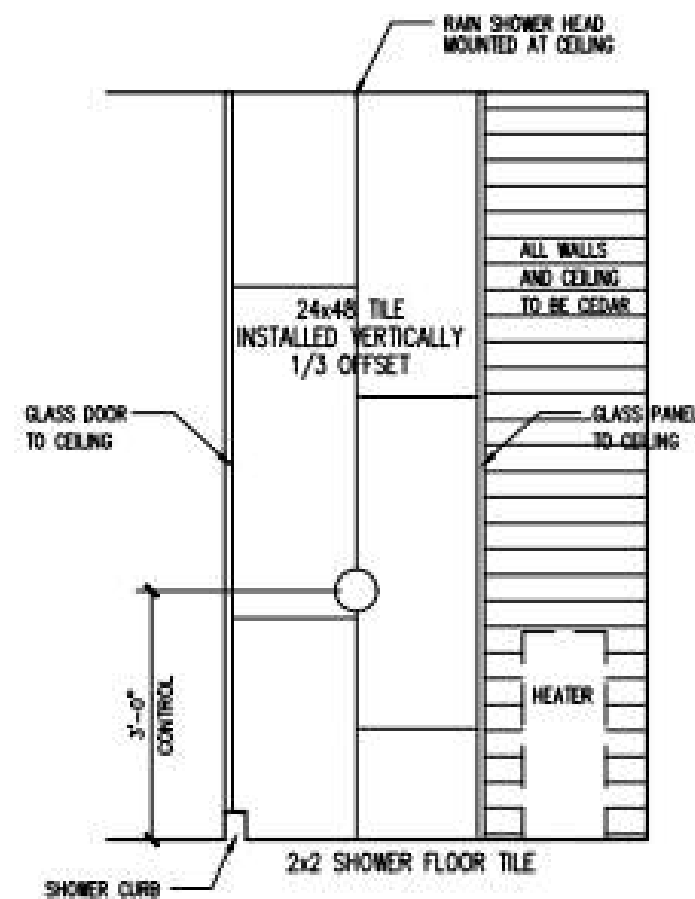


# FLOORING PLANS

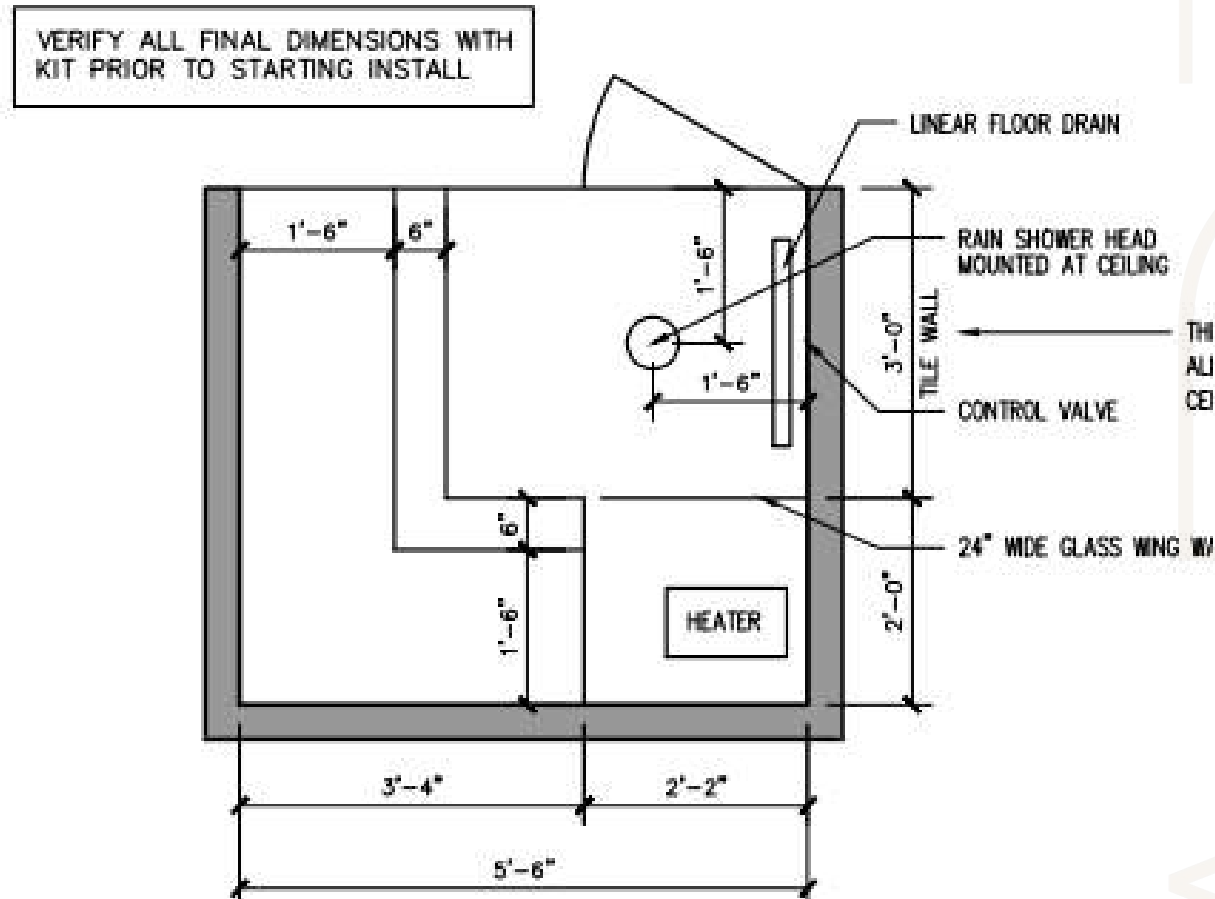
## BEFORE

# FLOORING PLANS

AFTER



6 SHOWER TILE DETAIL  
A-2 SCALE:  $\frac{3}{8}" = 1'-0"$



1 SAUNA DIMENSIONS  
A-2 SCALE:  $\frac{1}{2}" = 1'-0"$



# BEFORE & AFTER







ARKA



AFTER

NARI







# AESTHETICS

- Colored LED lighting
- Frameless glass door with black accents
- Unique rock basket
- Gold rain shower head
- Natural cedar walls and benches
- Linear drain





# PROJECT CHALLENGES, CRAFTMANSHIP, AND INNOVATIVE METHODS & USES

- We had to break up the concrete floor to rough-in plumbing groundwork
- Rerouting existing HVAC trunk lines to gain sufficient headroom
- Maintaining a safe and clean construction corridor through the family's main living area during construction.
- Custom-made glass wall to seal in heat and humidity
- Use of foil-backed vapor barrier to contain heat and protect framing members