

# A Timeless Classic

NARI MINNESOTA  
2023 COTY AWARDS

CATEGORY: RESIDENTIAL KITCHEN  
\$50,000-\$100,000





# About

Our clients had two major challenges with their 1980's White Bear Lake, MN home. First, was an underutilized formal dining room. Second, they longed for a larger kitchen space to accommodate both their growing family and to entertain friends and family. The solution was to take down the wall dividing the two spaces. This allowed for an additional 150 sq. ft. of now usable space, which included an entire wall of cabinetry, addition of two pantries, a beverage refrigerator and a coffee bar. Additionally, it allowed for the seating space to be expanded by incorporating a 14-foot island. The overall aesthetics were enhanced with new appliances, plumbing fixtures, flooring, lighting, backsplash and beautiful quartz countertops. This once closed off, dark and dated kitchen is now light-filled, fresh and inviting.







# Client Needs

✓ More cabinetry

✓ More seating

✓ More prep space

✓ Maximize unused space

✓ More space for entertaining

✓ Beverage station

✓ Improved aesthetics

✓ Energy efficient appliances





# Project Challenges

A wall separating the kitchen from an underutilized dining room space

The need for more space for a growing family and to entertain friends and family

Space is aesthetically dated primarily to the 1990s

Repair flooring with new luxury vinyl plank







# After Improvements

Open floor plan was achieved by removing two walls for better flow and accessibility

A new jumbo 14ft quartz countertop increased workspace as well as added counter seating / entertaining space

Addition of 150 sq. ft of usable space expanding the kitchen size by more than double

Zero maintenance quartz countertops

Seamless flooring



# Craftsmanship / Innovative Methods and Uses



Luxury vinyl plank  
flooring  
integrated and  
installed to match  
other flooring on  
main level



Beautiful custom  
maple cabinetry in  
two  
complimentary  
colors



Removed walls to  
open up space for  
better flow and  
usability



Custom rustic  
coffee brown  
colors were used  
to match flooring  
throughout





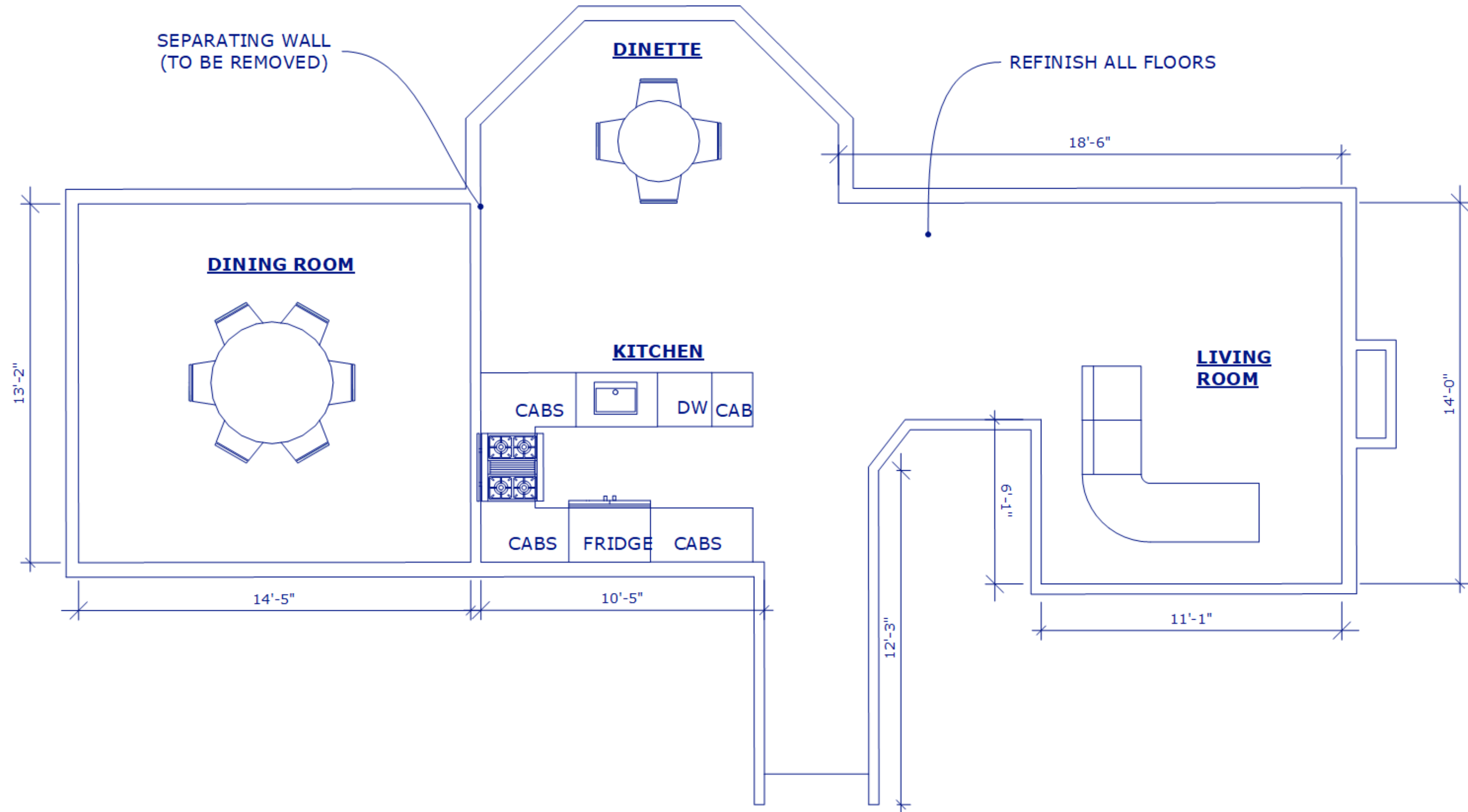
# Aesthetics

**The overall aesthetics were enhanced with new**

- Professional high-end appliances
- Beautiful custom maple cabinetry
- Gold accent fixtures
- Warm luxury vinyl plank flooring
- Coordinated lighting throughout
- Glass and ceramic tile backsplash in picket design
- Quartz countertops
- Solid wood and custom millwork
- Fresh paint throughout

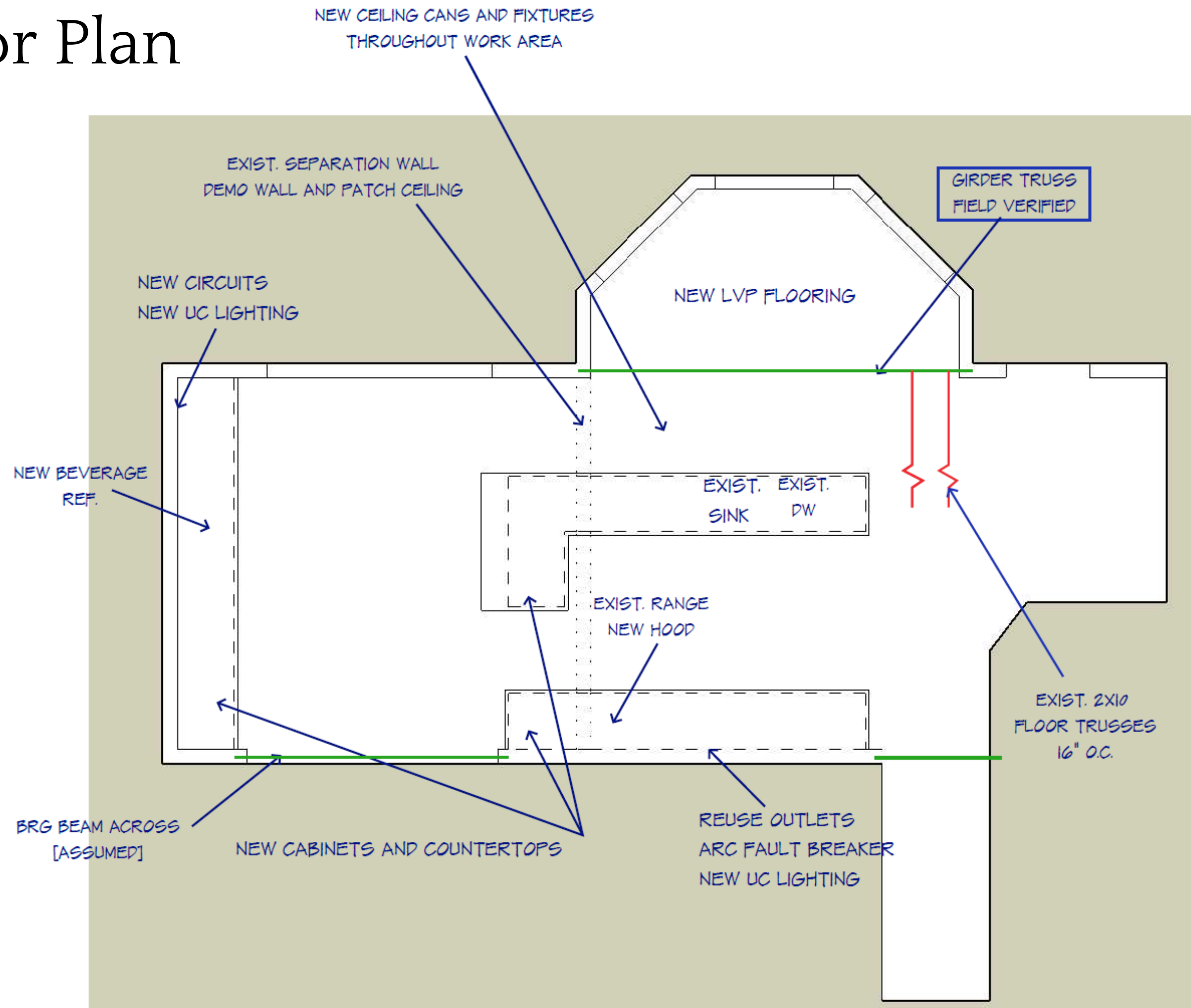


# Before Floor Plan





# After Floor Plan





# After 3D Renderings





# Before Photos





# After Photos







After Photos



# Before & After Side by Side





# Before & After Side by Side





# Before & After Side by Side

