

NARI MINNESOTA - 2023 COTY AWARDS

PROJECT: TAILORED BOHO CATEGORY: BASEMENT \$100K - \$250K

This Eden Prairie lower level has as much style and personality as the rest of the high style home! The homeowners are previous clients and asked the design team to finish their lower level using the vision already established in the upper levels of their home.

Upon entering the downstairs, a stunning wet bar can be seen which anchors the entertainment area. It features white quartz, charcoal cabinetry and ceiling-mounted industrial metal and glass shelving. A beverage center set in a striking arched alcove has a shimmering wallpaper backdrop and is accompanied by a nearly floor to ceiling wood wine rack inset into the neighboring wall.

Adjacent to the entertainment area is a comfortable seating area framed by a substantial charcoal-painted built-in and loaded with storage. The result is a setting that oozes hospitality with a contemporary boho-inspired vibe.

A modern long low-flung fireplace sits on a stark white wall across the room providing a focal point for a secondary seating area. The arched design detail found in the entertainment area is repeated next to the fireplace in a lighted niche. This lower level offers various places to relax depending on your mood.

A three-quarter bath completes the lower level. Carrying the same color palette into the space provides for a cohesive design. A stained floating vanity, built-in open shelving with chunky shelves and niche accents add warmth to the small space.

The attention to detail throughout this lower level is hard to overstate. The end product provides a sophisticated haven of living and entertainment for this growing family!

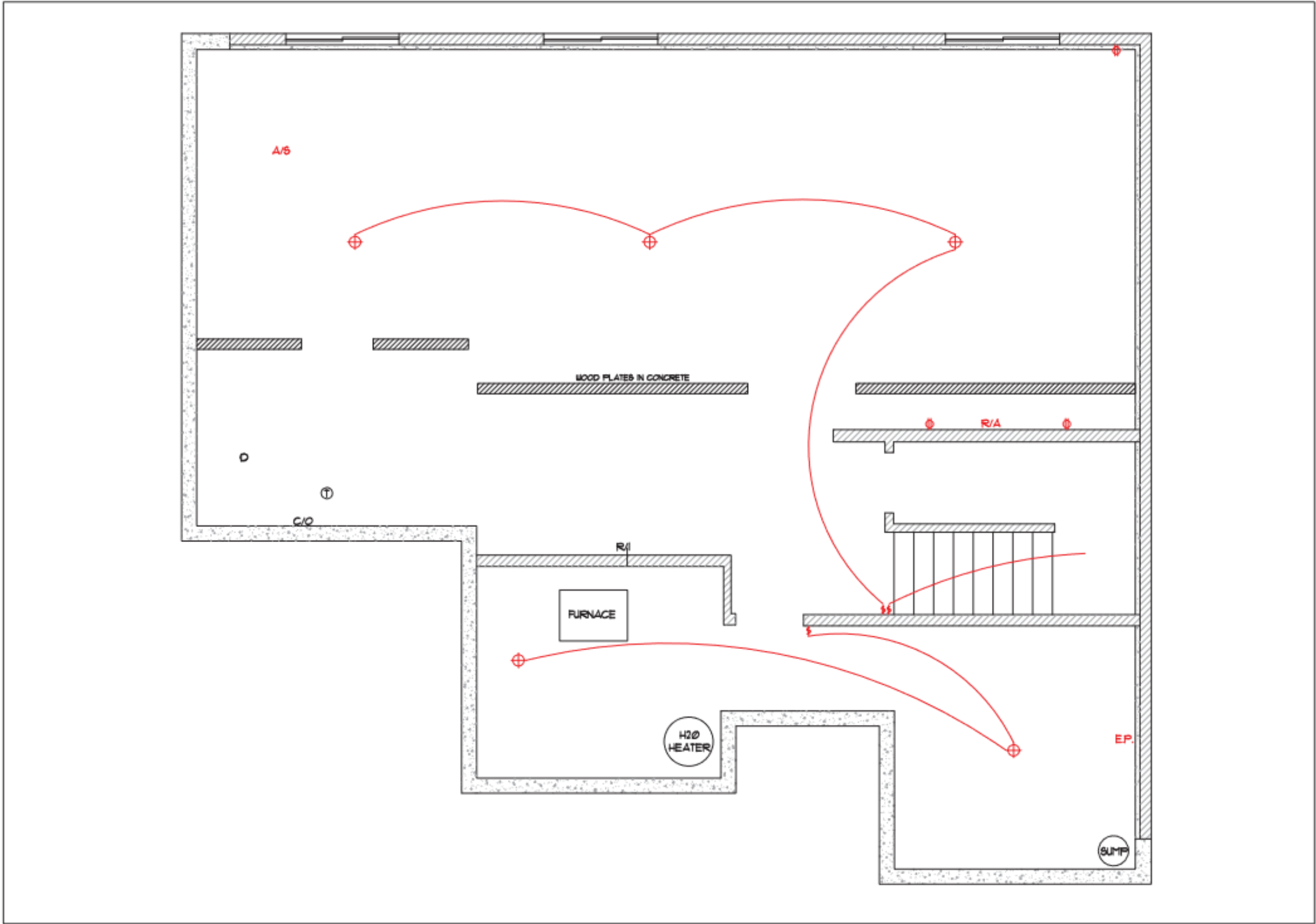


BEFORE PHOTOS

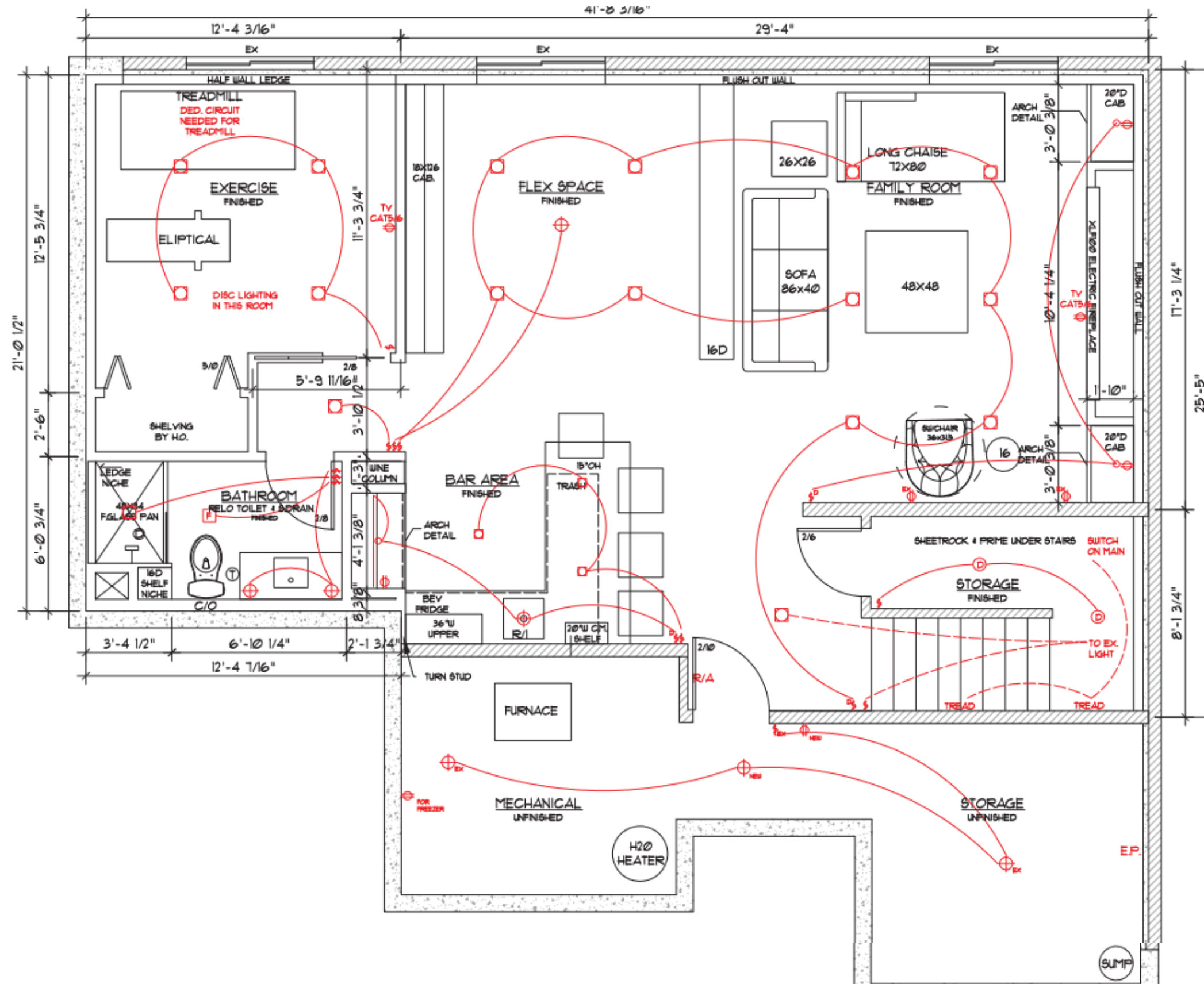


CLIENT REQUESTS AND BEFORE SITE PLAN

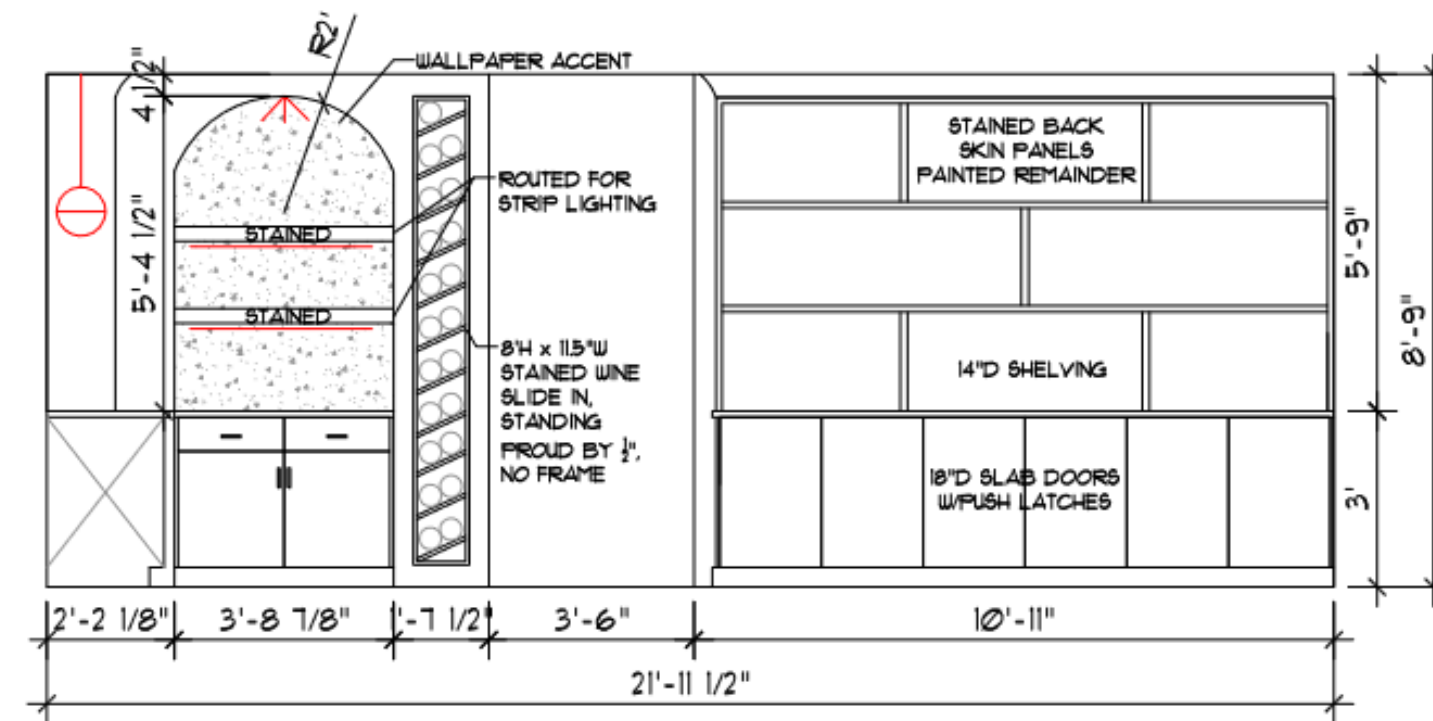
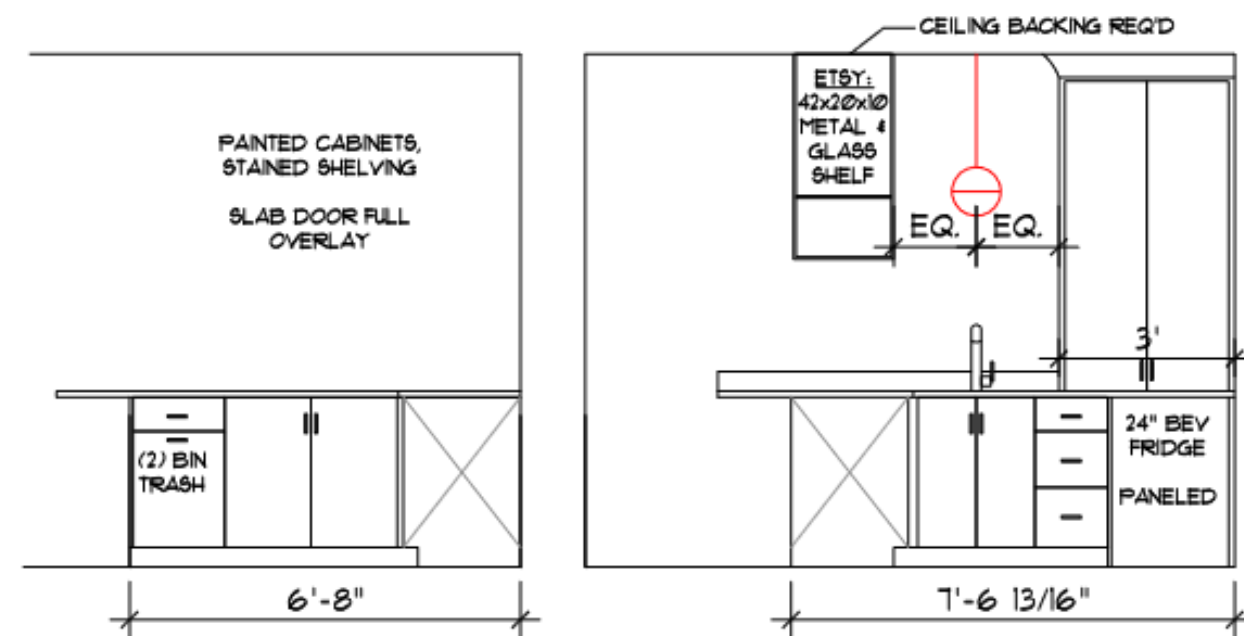
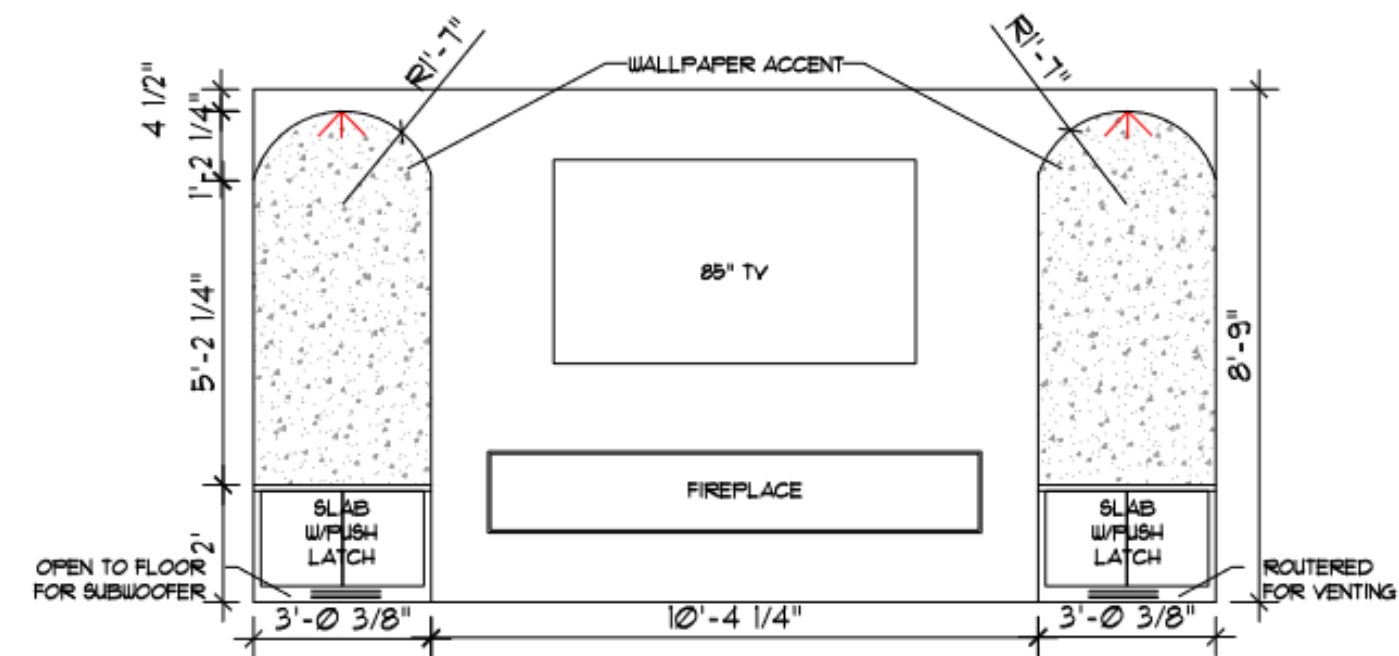
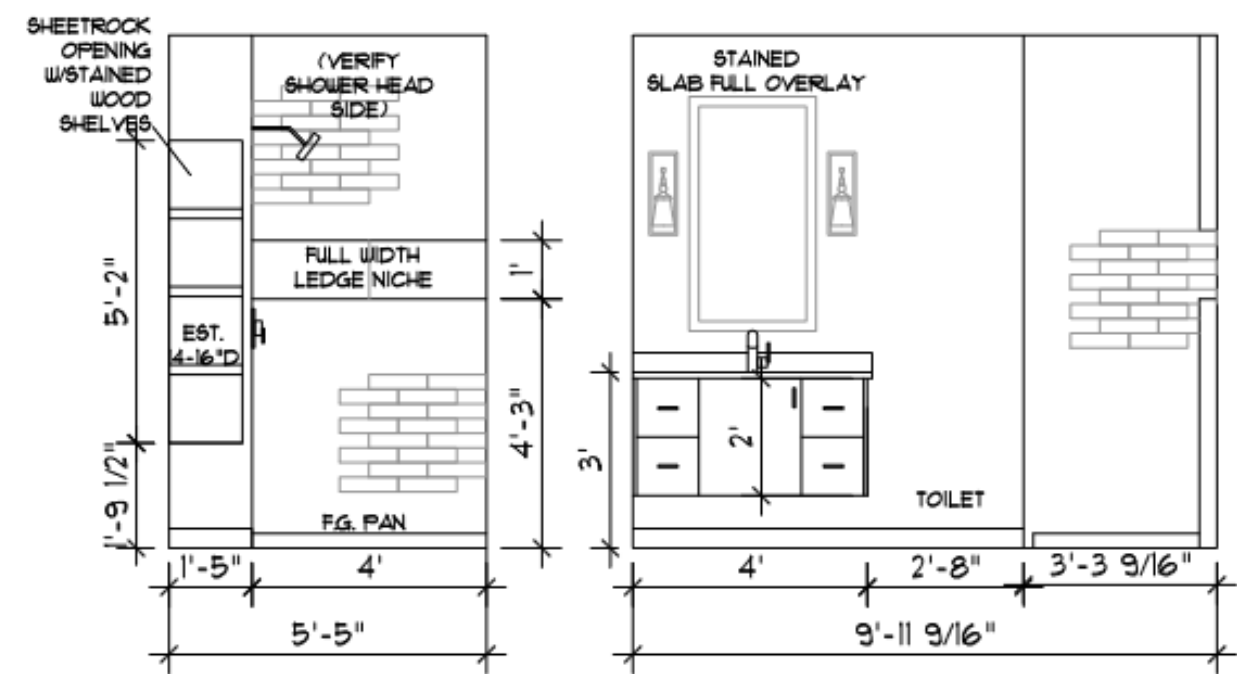
- Finish the lower level using the high-style vision already established in the upper levels of the home.
- Create a luxurious entertainment space for family and friends.
- Provide seating for many and plentiful storage.
- Incorporate a style-forward wet bar to anchor the entertainment space.
- Include a three-quarters bath to complete the lower level.
- Provide a space for a future bedroom, to be utilized as an exercise room for the time being.



AFTER SITE PLAN



ELEVATION DETAILS



BEFORE AND AFTER



PROJECT CHALLENGES

Previous Fire Damage

The concrete slab was uneven and damaged due to the fact that the original home on the site had burned down.

Rough-Ins

The existing bar and bathroom rough-ins from the new construction had to be adjusted to fit the design plan.

Design Challenge

The challenge from the design perspective was to create a cohesive flow from the rest of the home and bring it to the lower level.



LOWER LEVEL - FUNCTIONALITY

- The wet bar anchors the entertainment area. It features white quartz and charcoal cabinetry.
- Ceiling-mounted industrial metal and glass shelving offers display space.
- A beverage center set in a striking arched alcove provides space for bar supplies.
- A nearly floor to ceiling wood wine rack inset into the neighboring wall provides style and function.
- Natural light reflects off of the light-colored walls keeping the lower level bright.
- Furnishings are gathered in several spaces offering those present options for seating.
- Armchairs of differing sizes and covered in varied fabrics are present.
- The low-flung electric fireplace provides perfect place to curl up and keep warm.



AESTHETICS - LOWER LEVEL

- A note of glam punctuates the boho-inspired design.
- Arched alcoves repeat themselves throughout the space adding architectural interest and cohesiveness.
- The stained backing on the built-in creates high contrast against the charcoal finish. Push latches eliminate the need for external hardware and keep the clean yet tailored feel intact.
- The wet bar features white quartz, charcoal cabinetry and ceiling-mounted industrial metal and glass shelving.
- The beverage center is set in a striking arched alcove with shimmering wallpaper and chunky floating shelves.
- A nearly floor to ceiling angular wood wine rack is inset into the wall neighboring the beverage center.



FUNCTIONALITY - BATHROOM

- A three-quarter bath completes the lower level.
- Stained floating vanity and built-in open shelving with chunky shelves and niche accents add storage to the small space, while keeping the feeling of airiness.
- Unobstructed shower glass allows the feeling of openness to continue.

AESTHETICS - BATHROOM

- The three-quarters bath uses the same color palette as the main lower level to provide for a cohesive design.
- Stained floating vanity and chunky open shelving with niche accents add warmth.
- Undulated white tile in the shower pairs with dark gray diamond-shaped floor tile laid in a unique hex pattern to add contrast.
- Unobstructed shower glass allows the small space to feel open.
- Fixtures in and out of the shower carry a distinguishing black finish.

