

NARI MINNESOTA - 2023 CoT Y AWARDS

PROJECT: MIDCENTURY ROOTS **CATEGORY:** RESIDENTIAL KITCHEN \$100,000-150,000

Our clients, a husband and wife who loved to cook, sought to transform their dated kitchen into a home chef’s dream while opening up and modernizing the space.

A non-traditional floorplan involving tricky corners and numerous transitions with other spaces in the home required us to think creatively. Ultimately, the beauty of this project lies partially in its unique layout.

Lower cabinets finished in Farrow & Ball Stiffkey Blue and Sherwin Williams Snowbound White on the upper cabinets topped with Alabaster White quartz countertops intermix playfully. Features such as a new Wolf range, a prep sink and ample counterspace pay homage to our home chefs’ desires while refinished oak floors blend the new and existing spaces.

Meanwhile, tiny details give nod to the home’s midcentury origins, including Fleischman glass cabinet doors, lightly crackled elongated hex tile backsplash, aged brass and matte blue lighting from Rejuvenation, and hardware from Forge Hardware’s Paris cabinet collection in a champagne bronze finish.

The nearby area is redesigned to include a desk area and coat storage, serving as the perfect catch-all space for entry from the garage while helping gracefully meld the doorways and kitchen.

Altogether, the remodeled space feels both updated and harmonious with the home’s Midcentury roots, a beautiful space tailored to delight our home chefs!



BEFORE PHOTOS

Clockwise, starting in upper left corner.

- 1) Existing kitchen area with peninsula island
- 2) Existing eat-in area
- 3) View from kitchen into eating area
- 4) Interior kitchen wall that included fridge and oven
- 5) Opening into the front half of home plus nonfunctioning woodburning oven, surrounded by yellow brick
- 6) Cramped hallway that include doors to garage, bathroom and basement



CLIENT REQUESTS

- Open up the space - current layout felt choppy and awkward
- An updated design that would still blend with the rest of their midcentury-styled home
- Homeowners loved to cook and wanted home chef features including a Wolf range
- More countertop space
- A coat & storage area off of the garage entrance

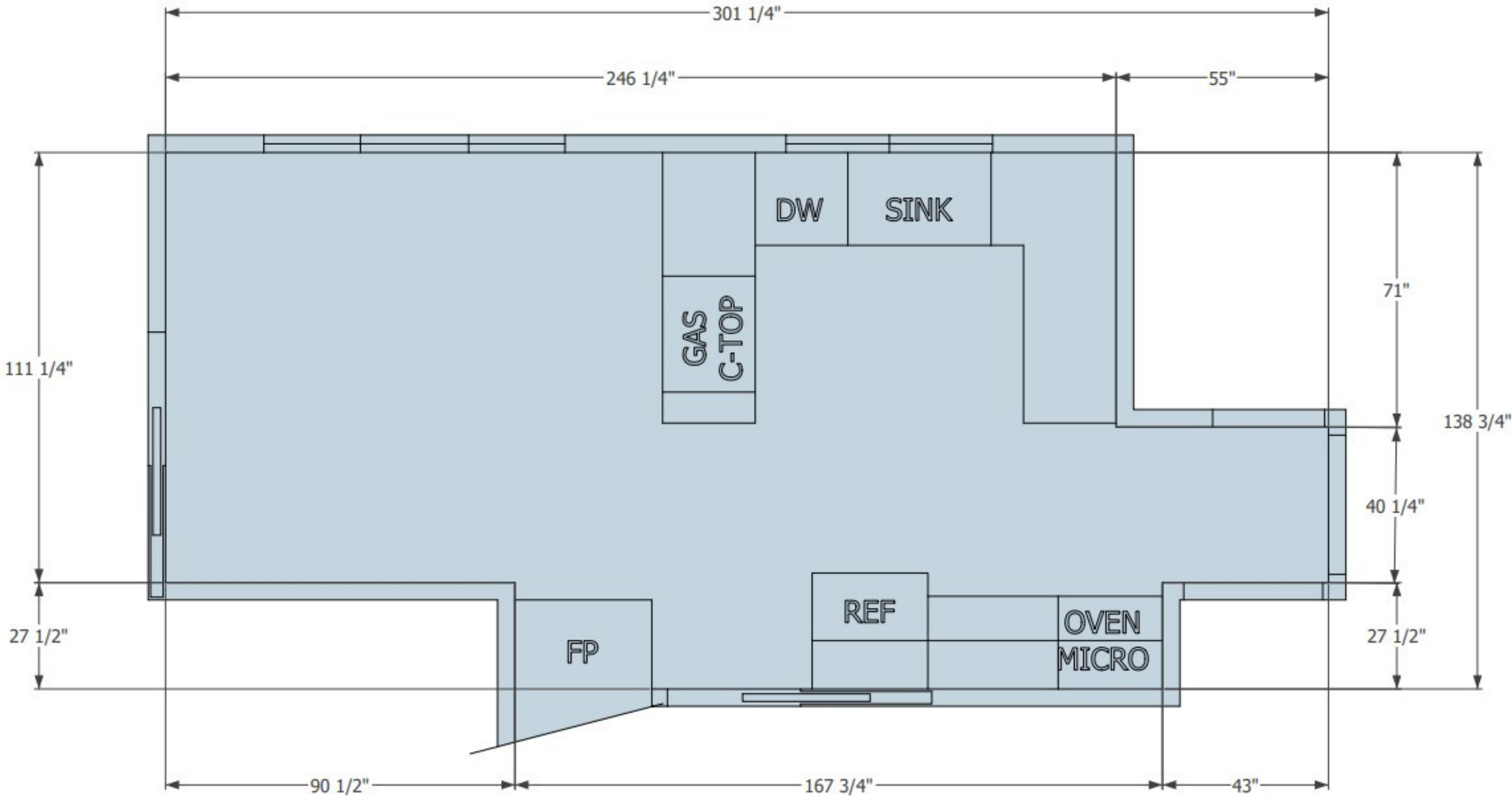
BEFORE SITE PLAN

Despite previous updates to the backsplash, flooring and countertops, the existing kitchen retained an outdated feel due to the cabinetry style and finish.

Nearby, a nonfunctioning woodburning oven, surrounded by yellow brick, kept the space firmly entrenched in the past.

Another point of contention for our clients was a peninsula-style island that closed off the space visually, blocking the view into the seating area.

A cramped and choppy layout, little countertop space, and the lack of a storage closet off the garage entrance rounded out the list of concerns.



EXISTING PLAN

AFTER SITE PLAN & LAYOUT CHALLENGES

Removing the Peninsula Island

While no walls were removed to achieve our new design, structural changes were required to ensure a successful reenvisioning. Our first order of business was to remove the peninsula-style island. This would allow us to extend the cabinetry to the far wall in our new design

Making Room for the Fridge

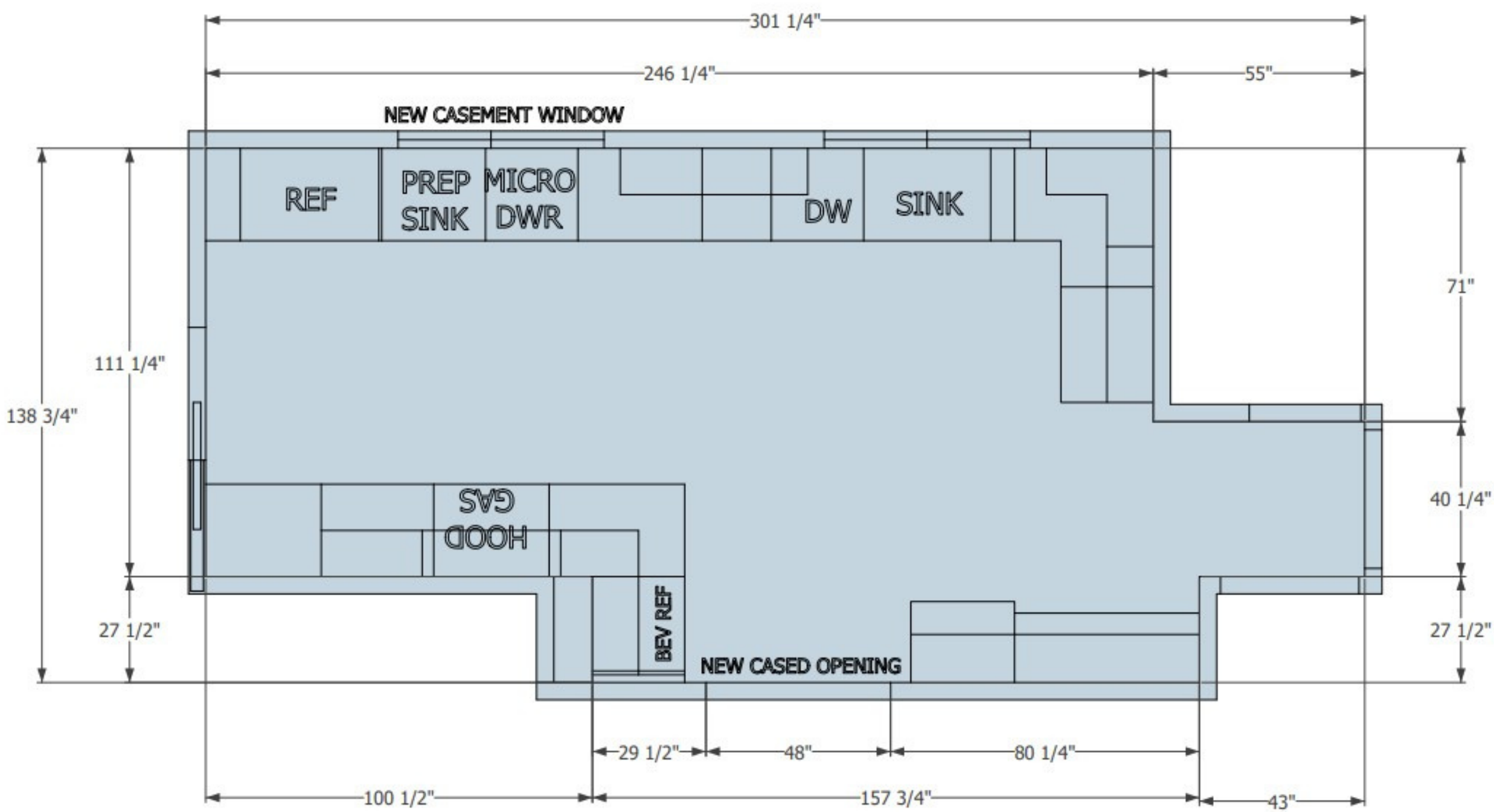
To make room for the fridge's new location, we needed to shorten the width of the large existing window near what had previously been the eat-in area.

Removing the Woodburning Oven

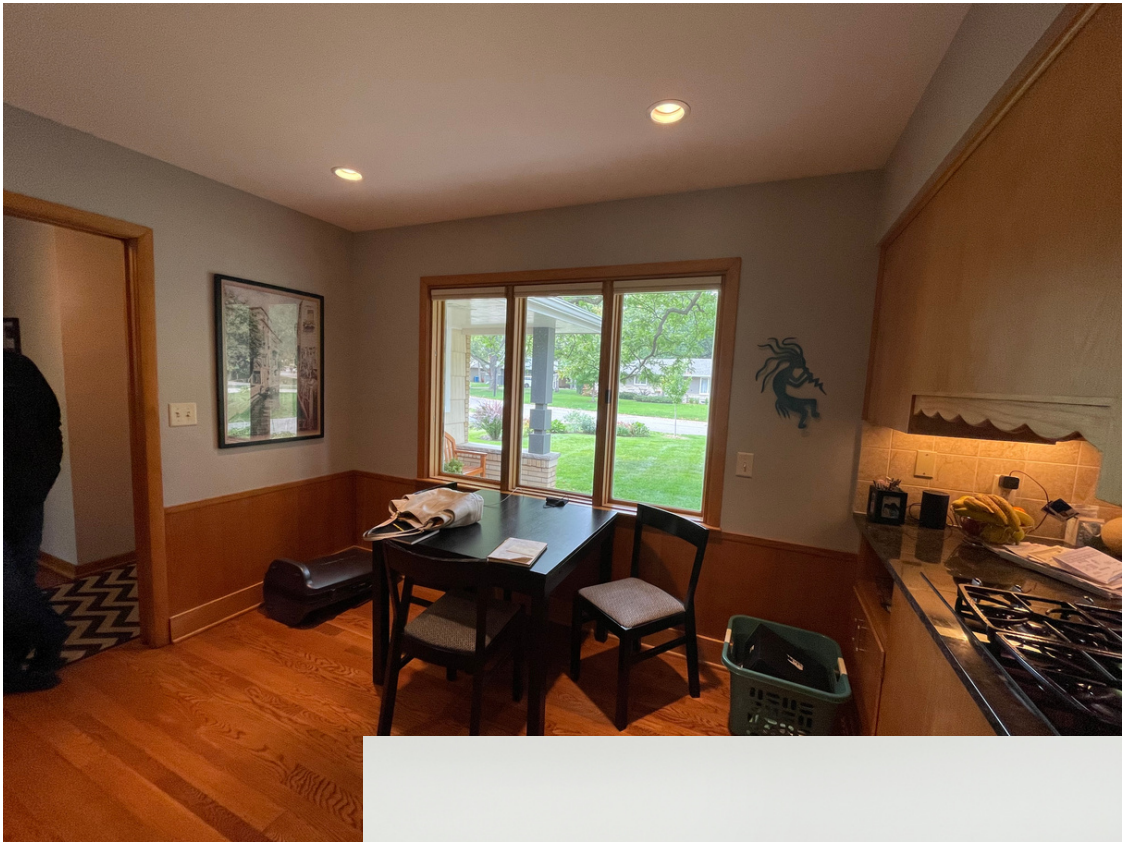
Removing the woodburning oven required both ceiling and roof repair in addition to masonry work, as the oven was back-to-back with a fireplace in the adjacent living room.

Tricky Corners and Numerous Transition Areas

A non-traditional floorplan involving tricky corners and numerous transitions required us to think creatively.



BEFORE AND AFTER



FUNCTIONALITY

A non-traditional floorplan involving tricky corners and numerous transitions with other spaces in the home required us to think creatively. Ultimately, the beauty of this project lies partially in its unique layout.

The bank of cabinetry running along the exterior wall provides sought-after countertop space.

A drawer microwave ensures clear lines along the upper cabinets while the newly shortened window makes room for the fridge.

The wall of cabinetry includes two sinks, one standard sink near the dishwasher and a prep sink with a reverse osmosis water system conveniently located near the stove and fridge.

Across the way, where the woodburning oven once was, a beverage station now stands ready for entertaining and everyday life. Around the corner, a previously blank wall of wasted space now houses a new Wolf range.

Finally, the area that previously housed the oven is redesigned to include coat and shoe storage with upper cabinetry, hooks and lower cubbies. The desk and cabinetry serve as the perfect catch-all space for entry from the garage while helping gracefully meld the doorways and kitchen.



AESTHETICS

New cabinetry throughout features Farrow & Ball Stiffkey Blue on the lower cabinets and Sherwin Williams Snowbound White on the upper cabinets topped with Alabaster White.

Meanwhile, tiny details give nod to the home’s midcentury origins, including:

- Fleischman glass cabinet doors
- lightly crackled Copa elongated hex tile backsplash
- aged brass and matte blue lighting from Rejuvenation
- Forge Hardware’s Paris cabinet hardware collection in a champagne bronze finish.



A new wood oven hood in matching Snowbound White blends seamlessly with the cabinetry, reinforcing a clean, crisp design.

Refinished oak floors blend the new and existing spaces.

Altogether, the remodeled space feels both updated and harmonious with the home’s midcentury roots, a beautiful space tailored to delight our home chefs!